

Guernsey Quarterly Population Bulletin

30th September 2014 - Issue date 31st July 2015



POLICY COUNCIL
THE STATES OF GUERNSEY

1.1 Introduction

The Guernsey Quarterly Population Bulletin provides headline information on the population of Guernsey (including Herm, Jethou and Lihou, but excluding Alderney, Sark and Breghou). A fuller report is published annually and is available from www.gov.gg/population. Both are compiled using data collated by the Rolling Electronic Census IT System.

1.2 Headlines

- Guernsey's population increased by 0.12% (77 people) over the year ending on the 30th September 2014. The increase resulted from a natural increase of 116 and net migration of -39.
- This follows annual population decreases over the previous 9 quarters, driven primarily by net migration levels.
- There were annual decreases of 0.1% (6 people) and 0.5% (188 people) in the 0 to 15 and the 16 to 64 age groups respectively during the year ending on the 30th September 2014. In contrast, there were increases in the 65 to 84 and the 85 and over age groups of 2.7% (268 people) and 2.0% (32 people) respectively. The decrease in the working age population was smaller than it had been in previous quarters.

Figure 1.2.1: Annual percentage change in total population

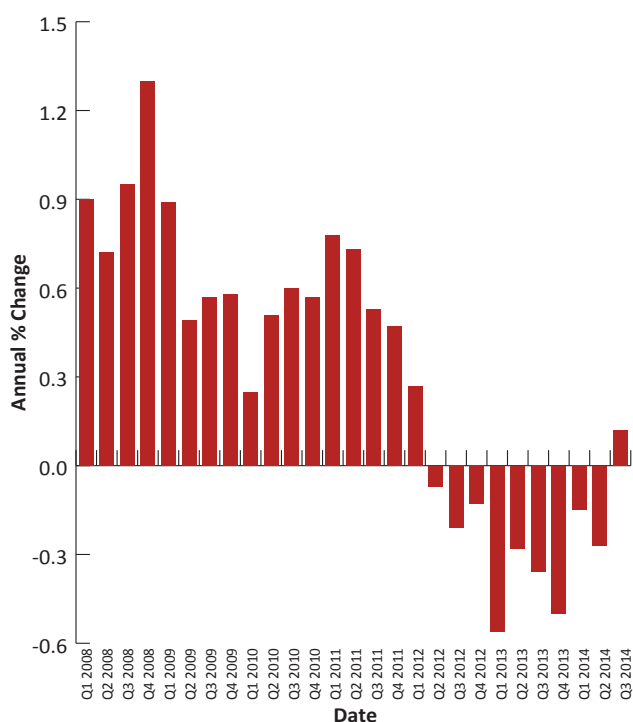


Table 1.2.1: Annual changes in total population

		Annual change due to net migration and natural increase	Annual % change due to net migration and natural increase
2009	Q3	352	0.57
2009	Q4	357	0.58
2010	Q1	157	0.25
2010	Q2	320	0.51
2010	Q3	374	0.60
2010	Q4	352	0.57
2011	Q1	484	0.78
2011	Q2	457	0.73
2011	Q3	335	0.53
2011	Q4	292	0.47
2012	Q1	170	0.27
2012	Q2	-44	-0.07
2012	Q3	-130	-0.21
2012	Q4	-84	-0.13
2013	Q1	-353	-0.56
2013	Q2	-174	-0.28
2013	Q3	-226	-0.36
2013	Q4	-314	-0.50
2014	Q1	-96	-0.15
2014	Q2	-172	-0.27
2014	Q3	77	0.12

2.1 Annual changes

Table 2.1.1: Annual changes in total population by type of change

		Births	Deaths	Natural increase	Immigration	Emigration	Net migration	Natural increase and net migration	Net admin changes	Total population at end of quarter
2009	Q3	665	552	113	4,770	4,531	239	352	-	62,489
2009	Q4	675	543	132	4,677	4,452	225	357	-	62,099
2010	Q1	656	513	143	4,482	4,468	14	157	-	62,431
2010	Q2	620	505	115	4,608	4,403	205	320	-	62,854
2010	Q3	621	501	120	4,523	4,269	254	374	-	62,863
2010	Q4	613	497	116	4,494	4,258	236	352	-	62,451
2011	Q1	605	503	102	4,631	4,249	382	484	-	62,915
2011	Q2	667	506	161	4,601	4,305	296	457	-	63,311
2011	Q3	656	505	151	4,541	4,357	184	335	-	63,198
2011	Q4	650	535	115	4,420	4,243	177	292	-	62,743
2012	Q1	674	547	127	4,220	4,177	43	170	-	63,085
2012	Q2	637	565	72	4,005	4,121	-116	-44	-	63,267
2012	Q3	646	595	51	3,922	4,103	-181	-130	-	63,068
2012	Q4	652	590	62	3,918	4,064	-146	-84	-	62,659
2013	Q1	667	556	111	3,845	4,309	-464	-353	-	62,732
2013	Q2	675	576	99	3,873	4,146	-273	-174	-	63,093
2013	Q3	631	544	87	3,838	4,151	-313	-226	-	62,842
2013	Q4	636	522	114	3,735	4,163	-428	-314	-	62,345
2014	Q1	627	526	101	3,601	3,798	-197	-96	75	62,711
2014	Q2	625	505	120	3,497	3,789	-292	-172	29	62,950
2014	Q3	628	512	116	3,612	3,651	-39	77	29	62,948

Please note that the figures shown in the table above and the graphs below are totals over the four quarters ending in the quarter shown.

Figure 2.1.1: Births and deaths

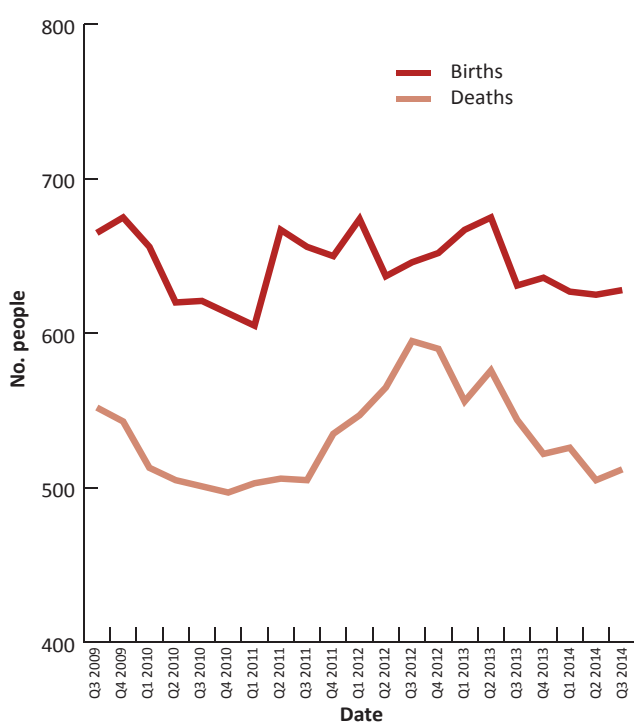
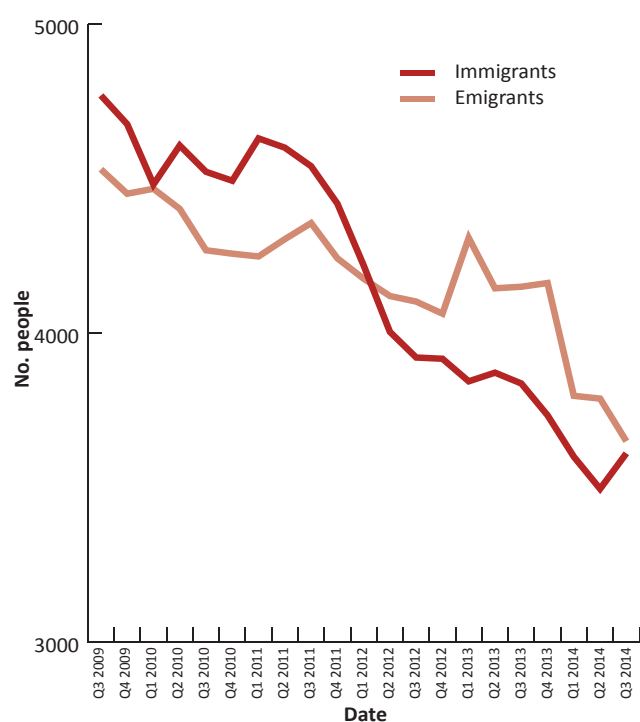


Figure 2.1.2: Immigration and emigration



3.1 Annual demographic changes

Figure 3.1.1: Annual percentage change in total population by age group

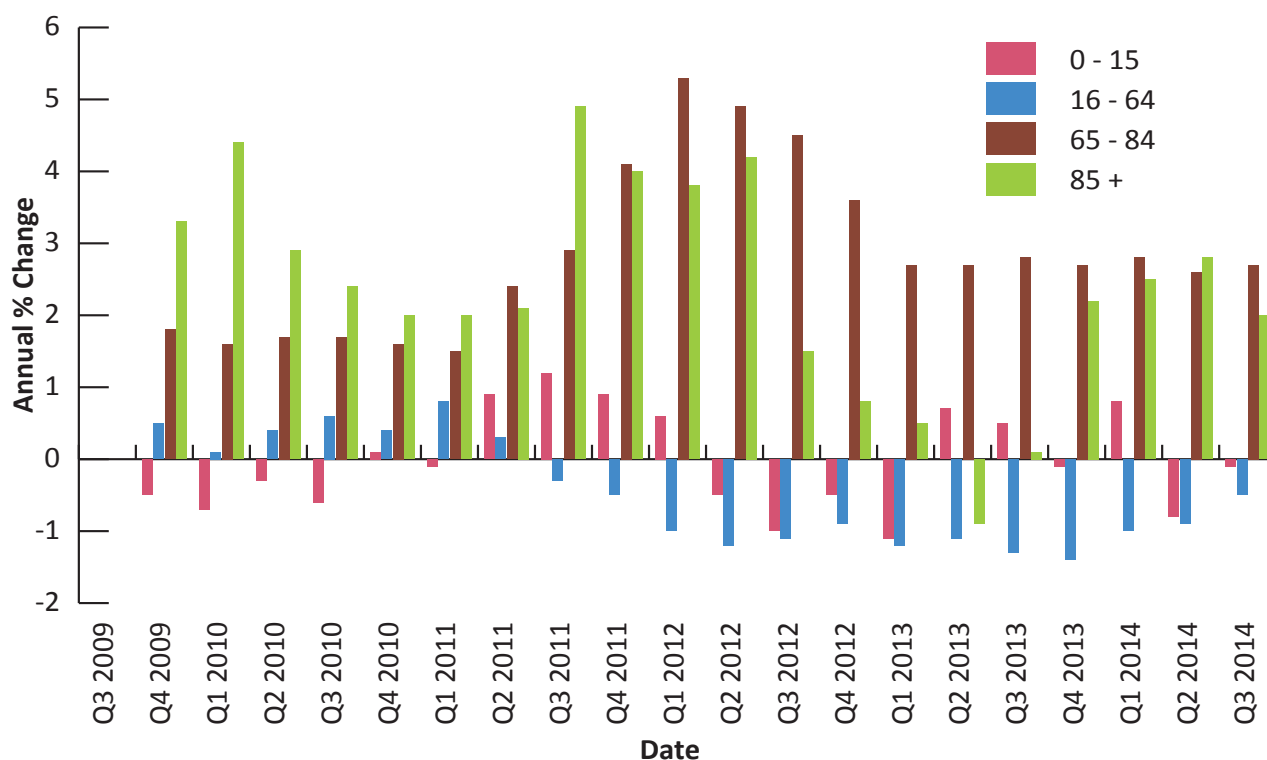


Table 3.1.1: Annual population changes

		0 - 15	Annual % change	16 - 64	Annual % change	65 - 84	Annual % change	85 +	Annual % change
2009	Q3	10,191	-	42,133	-	8,698	-	1,467	-
2009	Q4	10,120	-0.5	41,787	0.5	8,716	1.8	1,476	3.3
2010	Q1	10,161	-0.7	42,044	0.1	8,740	1.6	1,486	4.4
2010	Q2	10,149	-0.3	42,406	0.4	8,802	1.7	1,497	2.9
2010	Q3	10,127	-0.6	42,392	0.6	8,842	1.7	1,502	2.4
2010	Q4	10,134	0.1	41,960	0.4	8,852	1.6	1,505	2.0
2011	Q1	10,151	-0.1	42,378	0.8	8,871	1.5	1,515	2.0
2011	Q2	10,239	0.9	42,528	0.3	9,015	2.4	1,529	2.1
2011	Q3	10,246	1.2	42,277	-0.3	9,099	2.9	1,576	4.9
2011	Q4	10,221	0.9	41,746	-0.5	9,211	4.1	1,565	4.0
2012	Q1	10,210	0.6	41,963	-1.0	9,340	5.3	1,572	3.8
2012	Q2	10,184	-0.5	42,031	-1.2	9,459	4.9	1,593	4.2
2012	Q3	10,147	-1.0	41,812	-1.1	9,510	4.5	1,599	1.5
2012	Q4	10,167	-0.5	41,371	-0.9	9,543	3.6	1,578	0.8
2013	Q1	10,097	-1.1	41,460	-1.2	9,595	2.7	1,580	0.5
2013	Q2	10,251	0.7	41,550	-1.1	9,714	2.7	1,578	-0.9
2013	Q3	10,194	0.5	41,273	-1.3	9,775	2.8	1,600	0.1
2013	Q4	10,156	-0.1	40,777	-1.4	9,800	2.7	1,612	2.2
2014	Q1	10,180	0.8	41,047	-1.0	9,864	2.8	1,620	2.5
2014	Q2	10,168	-0.8	41,192	-0.9	9,968	2.6	1,622	2.8
2014	Q3	10,188	-0.1	41,085	-0.5	10,043	2.7	1,632	2.0

4.1 Methodology and further information

The information in this report is sourced from ten separate States of Guernsey databases (from seven different Departments) and is collated using the Rolling Electronic Census IT system; a pioneering and cost saving project, which was completed in December 2014. Earlier information was provided by the Social Security Department and was sourced from two of the databases now linked to the Rolling Electronic Census IT system. More information on the Rolling Electronic Census Project is available from www.gov.gg/population.

People that are included in the headcount

The total headcount presented in this Report represents the ordinarily resident population of Guernsey, Herm, Jethou and Lihou. It includes all the people living in one of the Islands with some permanency (all individuals who are employed in Guernsey or who are resident for longer than 26 weeks are required to register with the Social Security Department) and people who may not have physically been in the Island on the particular day, such as those in full-time education off Island and those away on holiday or business. It excludes short-term visitors to the Island (on holiday, business trips or other visits).

Natural increase

Natural increase in population is defined as the number of births minus the number of deaths during a particular time period.

Immigration and Emigration

For statistical purposes, an immigrant is defined as a person moving to Guernsey to work for any period of time or to live for a period of 26 weeks or more. An emigrant is defined as a person moving away from Guernsey to work for any period of time or to live for a period of 26 weeks or more. Emigrants and immigrants include residentially qualified people, people with a housing licence and their families, and people living in Open Market accommodation and people moving between Guernsey and Alderney or Sark as well as locations outside the Bailiwick..

Administrative changes

The types of population changes that are referred to as “Administrative Changes” are those which cannot be attributed to migration or natural increase during the preceding quarter or year. They are a result of additional information being made available more than nine months after the person came to or left the Island.

5.1 Contact details

The contents of this Report will continue to be developed over time, so if you have any feedback or would like to see other information included in this or other publications in the future, please contact the Policy and Research Unit.

Please contact Helen Walton (Research Section Manager) for further information.

Policy and Research Unit
Sir Charles Frossard House
La Charroterie
St Peter Port
Guernsey
GY1 1FH

Tel: (01481) 717292

Fax: (01481) 713787

e-mail: policy.research@gov.gg

web: www.gov.gg/pru