



GUERNSEY STATES
LE MARE DE CARTERET SCHOOLS PROJECT
Value Review Figures
13.11.2015

EXISTING SITE LAYOUT DRAWINGS

Design Engine Stage D Report Abstract - October 2014 for 600 pupil HS

3D View from southwest



7

Layout Plan



Site Plan

- A full measured and topographical survey has been undertaken for the site.
- Please refer to Section 3-Landscape Design for more detailed analysis of the site and the proposed landscape.

8

Figure 1



GUERNSEY STATES
LE MARE DE CARTERET SCHOOLS PROJECT
Value Review Figures
13.11.2015

PROPOSED SITE STRATEGY

Design Engine Stage D Report Abstract - October 2014 for 600 pupil HS

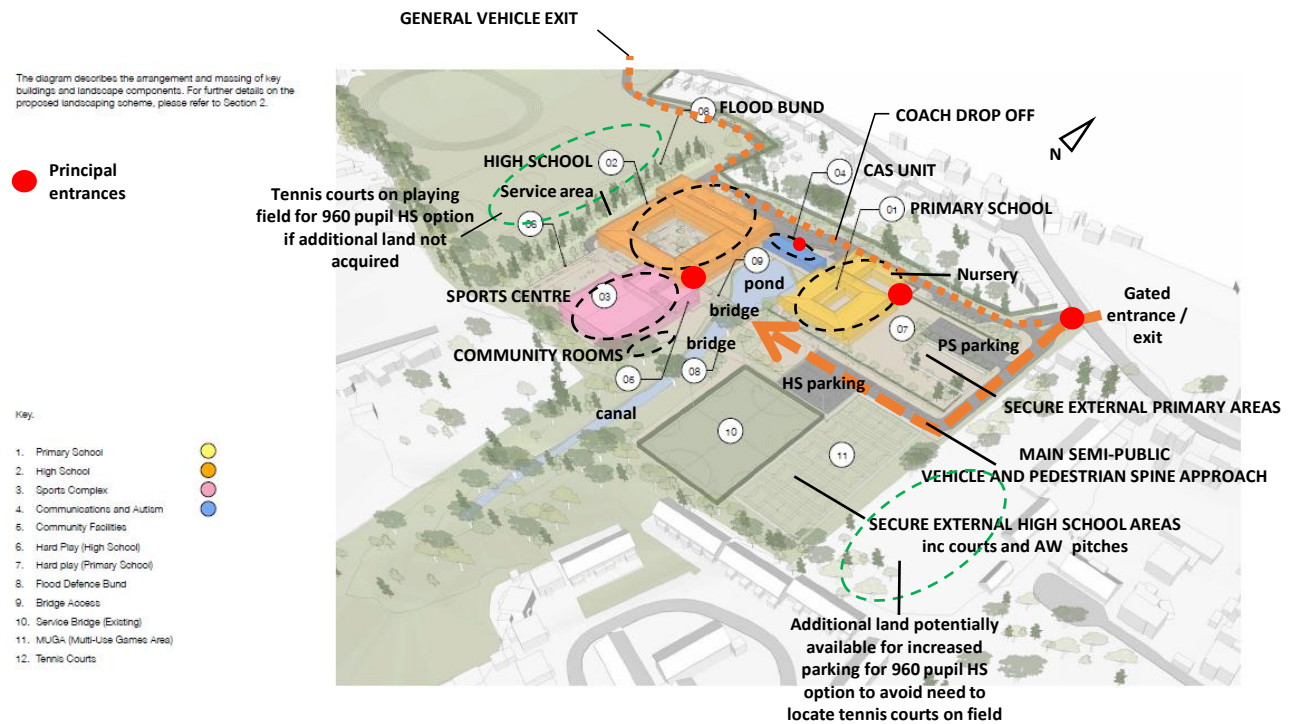


Figure 2



GUERNSEY STATES
LE MARE DE CARTERET SCHOOLS PROJECT
Value Review Figures
13.11.2015

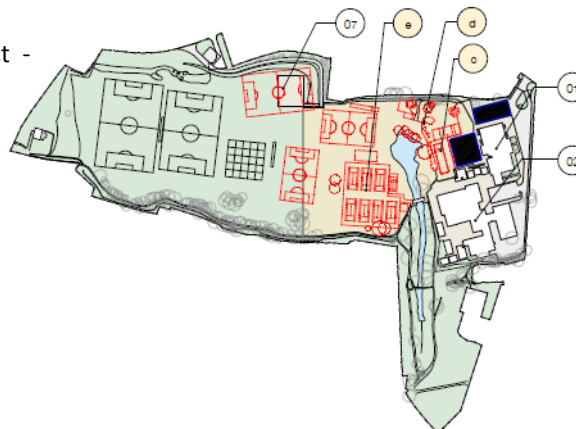
PROPOSED PHASING

Design Engine Stage D Report Abstract -
October 2014 for 600 pupil HS

The diagrams describes the arrangement for the phased construction of key buildings and landscape components. For further details on the proposed landscaping scheme, please refer Drawings 1320-1000, 1001, 1002, 1003, 1004 and 1005 in the appendix.

Key:

1. Primary School
2. High School
3. Sports Complex
4. Communications and Autism
5. MUGA (Multi-Use Games Area)
6. Tennis Courts
7. Contractor's Compound
8. Temporary Car Parking





GUERNSEY STATES
LE MARE DE CARTERET SCHOOLS PROJECT
Value Review Figures
13.11.2015

Ground Floor Plan of 420 pupil Primary School and CAS Unit

Design Engine Stage D Report Abstract October 2014 for 600 Pupil HS

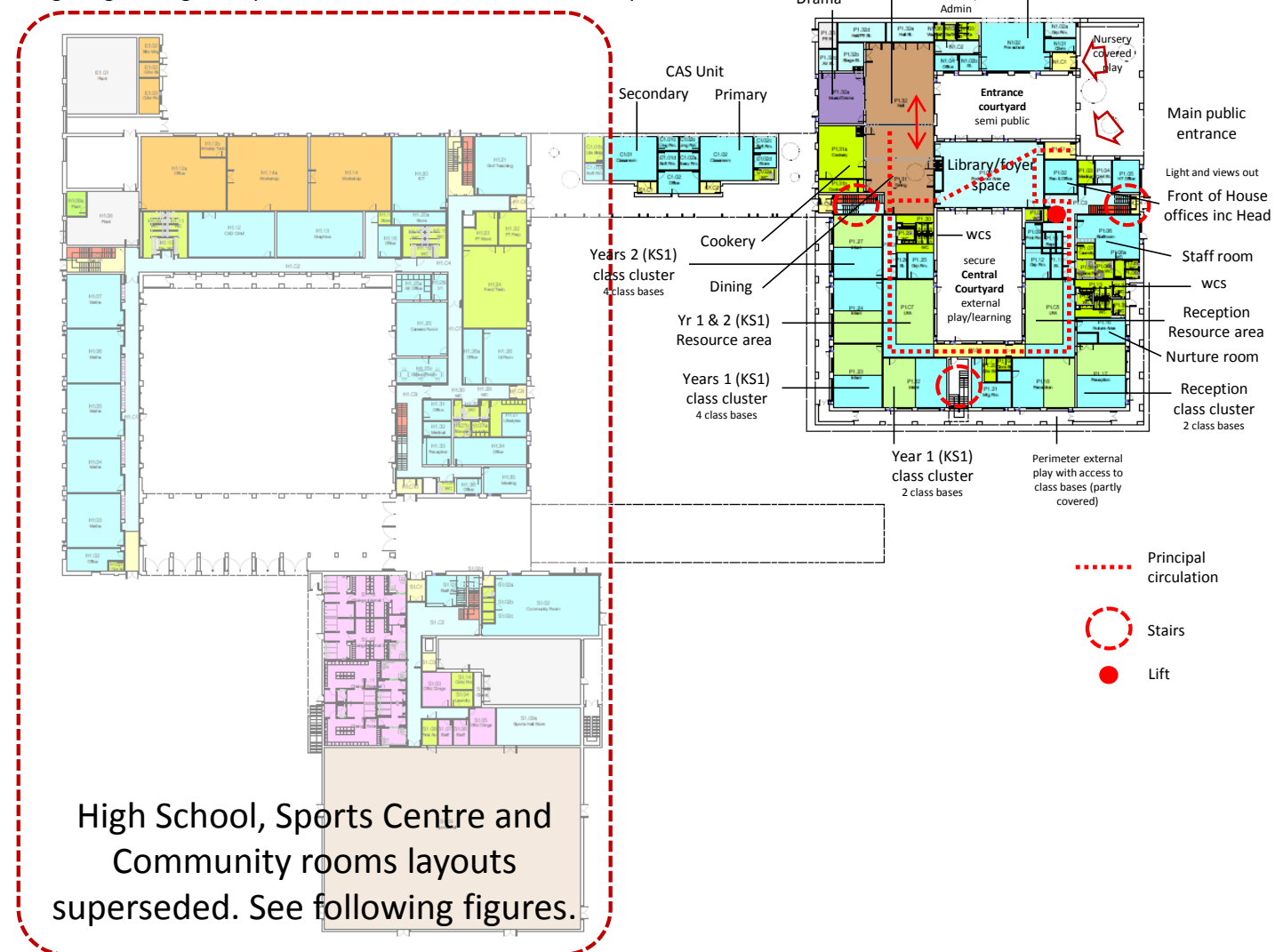


Figure 4



GUERNSEY STATES
LE MARE DE CARTERET SCHOOLS PROJECT
Value Review Figures
13.11.2015

First Floor Plan of 420 pupil Primary School

Design Engine Stage D Report Abstract October 2014 for 600 pupil HS

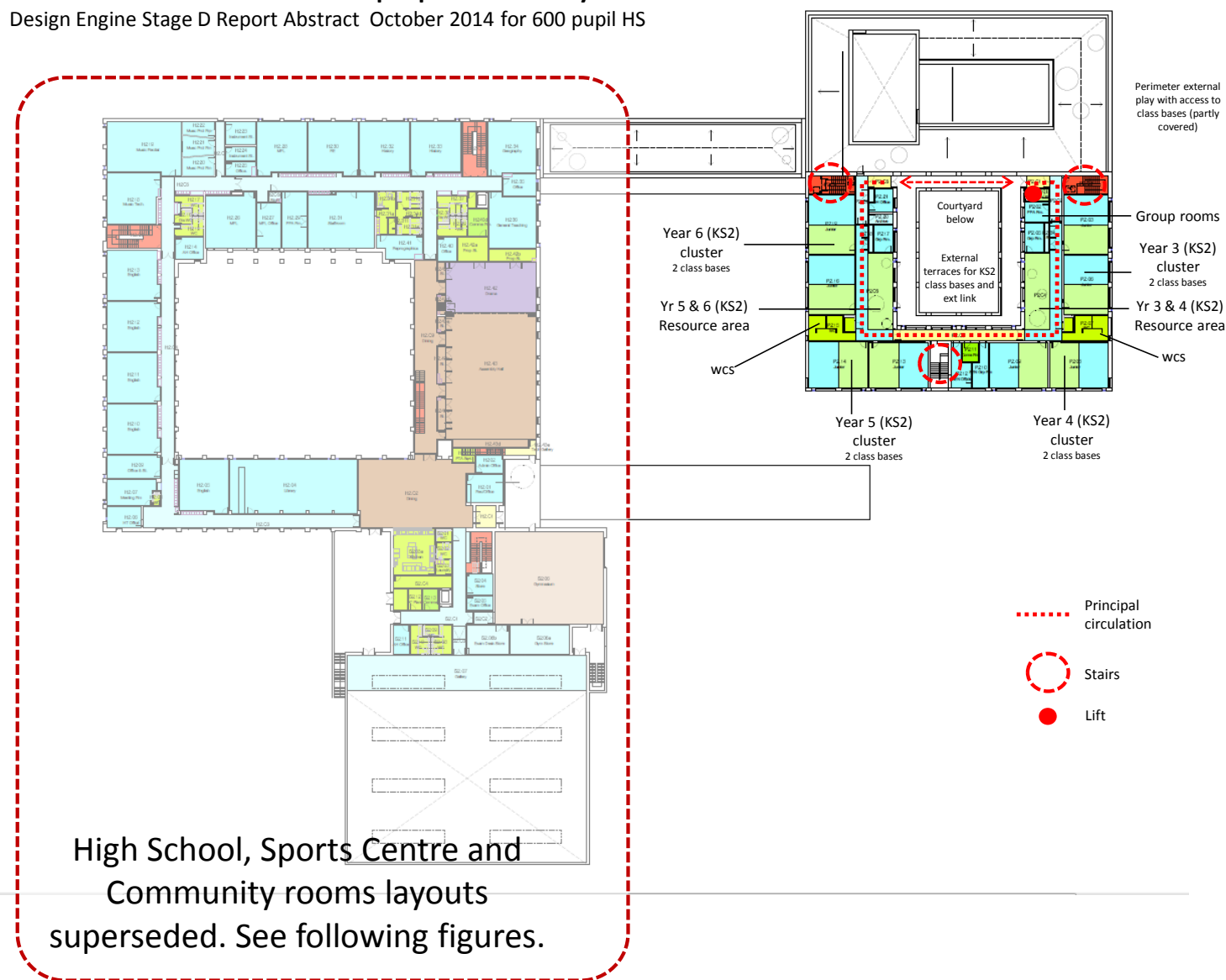


Figure 5



GUERNSEY STATES
LE MARE DE CARTERET SCHOOLS PROJECT
Value Review Figures
13.11.2015

Ground Floor Plan of 960 pupil HS

Design Engine Drwg 1200 2000 – Stage D dated Sept 2015



Figure 6



GUERNSEY STATES
LE MARE DE CARTERET SCHOOLS PROJECT
Value Review Figures
13.11.2015

Ground Floor Plan of 600 pupil HS

Design Engine Drwg 1200 2000 600 – Stage D dated Sept 2015



1	2	3	4	5	6	7	8	9	10	11	12	13	14	15	16	17	18	19	20	21	22	23	24	25	26	27	28	29	30	31	32	33	34	35	36	37	38	39	40	41	42	43	44	45	46	47	48	49	50	51	52	53	54	55	56	57	58	59	60	61	62	63	64	65	66	67	68	69	70	71	72	73	74	75	76	77	78	79	80	81	82	83	84	85	86	87	88	89	90	91	92	93	94	95	96	97	98	99	100
---	---	---	---	---	---	---	---	---	----	----	----	----	----	----	----	----	----	----	----	----	----	----	----	----	----	----	----	----	----	----	----	----	----	----	----	----	----	----	----	----	----	----	----	----	----	----	----	----	----	----	----	----	----	----	----	----	----	----	----	----	----	----	----	----	----	----	----	----	----	----	----	----	----	----	----	----	----	----	----	----	----	----	----	----	----	----	----	----	----	----	----	----	----	----	----	----	----	----	-----

1	2	3	4	5	6	7	8	9	10	11	12	13	14	15	16	17	18	19	20	21	22	23	24	25	26	27	28	29	30	31	32	33	34	35	36	37	38	39	40	41	42	43	44	45	46	47	48	49	50	51	52	53	54	55	56	57	58	59	60	61	62	63	64	65	66	67	68	69	70	71	72	73	74	75	76	77	78	79	80	81	82	83	84	85	86	87	88	89	90	91	92	93	94	95	96	97	98	99	100
---	---	---	---	---	---	---	---	---	----	----	----	----	----	----	----	----	----	----	----	----	----	----	----	----	----	----	----	----	----	----	----	----	----	----	----	----	----	----	----	----	----	----	----	----	----	----	----	----	----	----	----	----	----	----	----	----	----	----	----	----	----	----	----	----	----	----	----	----	----	----	----	----	----	----	----	----	----	----	----	----	----	----	----	----	----	----	----	----	----	----	----	----	----	----	----	----	----	----	-----

1	2	3	4	5	6	7	8	9	10	11	12	13	14	15	16	17	18	19	20	21	22	23	24	25	26	27	28	29	30	31	32	33	34	35	36	37	38	39	40	41	42	43	44	45	46	47	48	49	50	51	52	53	54	55	56	57	58	59	60	61	62	63	64	65	66	67	68	69	70	71	72	73	74	75	76	77	78	79	80	81	82	83	84	85	86	87	88	89	90	91	92	93	94	95	96	97	98	99	100
---	---	---	---	---	---	---	---	---	----	----	----	----	----	----	----	----	----	----	----	----	----	----	----	----	----	----	----	----	----	----	----	----	----	----	----	----	----	----	----	----	----	----	----	----	----	----	----	----	----	----	----	----	----	----	----	----	----	----	----	----	----	----	----	----	----	----	----	----	----	----	----	----	----	----	----	----	----	----	----	----	----	----	----	----	----	----	----	----	----	----	----	----	----	----	----	----	----	----	-----

1	2	3	4	5	6	7	8	9	10	11	12	13	14	15	16	17	18	19	20	21	22	23	24	25	26	27	28	29	30	31	32	33	34	35	36	37	38	39	40	41	42	43	44	45	46	47	48	49	50	51	52	53	54	55	56	57	58	59	60	61	62	63	64	65	66	67	68	69	70	71	72	73	74	75	76	77	78	79	80	81	82	83	84	85	86	87	88	89	90	91	92	93	94	95	96	97	98	99	100
---	---	---	---	---	---	---	---	---	----	----	----	----	----	----	----	----	----	----	----	----	----	----	----	----	----	----	----	----	----	----	----	----	----	----	----	----	----	----	----	----	----	----	----	----	----	----	----	----	----	----	----	----	----	----	----	----	----	----	----	----	----	----	----	----	----	----	----	----	----	----	----	----	----	----	----	----	----	----	----	----	----	----	----	----	----	----	----	----	----	----	----	----	----	----	----	----	----	----	-----

1	2	3	4	5	6	7	8	9	10	11	12	13	14	15	16	17	18	19	20	21	22	23	24	25	26	27	28	29	30	31	32	33	34	35	36	37	38	39	40	41	42	43	44	45	46	47	48	49	50	51	52	53	54	55	56	57	58	59	60	61	62	63	64	65	66	67	68	69	70	71	72	73	74	75	76	77	78	79	80	81	82	83	84	85	86	87	88	89	90	91	92	93	94	95	96	97	98	99	100
---	---	---	---	---	---	---	---	---	----	----	----	----	----	----	----	----	----	----	----	----	----	----	----	----	----	----	----	----	----	----	----	----	----	----	----	----	----	----	----	----	----	----	----	----	----	----	----	----	----	----	----	----	----	----	----	----	----	----	----	----	----	----	----	----	----	----	----	----	----	----	----	----	----	----	----	----	----	----	----	----	----	----	----	----	----	----	----	----	----	----	----	----	----	----	----	----	----	----	-----

1	2	3	4	5	6	7	8	9	10	11	12	13	14	15	16	17	18	19	20	21	22	23	24	25	26	27	28	29	30	31	32	33	34	35	36	37	38	39	40	41	42	43	44	45	46	47	48	49	50	51	52	53	54	55	56	57	58	59	60	61	62	63	64	65	66	67	68	69	70	71	72	73	74	75	76	77	78	79	80	81	82	83	84	85	86	87	88	89	90	91	92	93	94	95	96	97	98	99	100
---	---	---	---	---	---	---	---	---	----	----	----	----	----	----	----	----	----	----	----	----	----	----	----	----	----	----	----	----	----	----	----	----	----	----	----	----	----	----	----	----	----	----	----	----	----	----	----	----	----	----	----	----	----	----	----	----	----	----	----	----	----	----	----	----	----	----	----	----	----	----	----	----	----	----	----	----	----	----	----	----	----	----	----	----	----	----	----	----	----	----	----	----	----	----	----	----	----	----	-----

1	2	3	4	5	6	7	8	9	10	11	12	13	14	15	16	17	18	19	20	21	22	23	24	25	26	27	28	29	30	31	32	33	34	35	36	37	38	39	40	41	42	43	44	45	46	47	48	49	50	51	52	53	54	55	56	57	58	59	60	61	62	63	64	65	66	67	68	69	70	71	72	73	74	75	76	77	78	79	80	81	82	83	84	85	86	87	88	89	90	91	92	93	94	95	96	97	98	99	100
---	---	---	---	---	---	---	---	---	----	----	----	----	----	----	----	----	----	----	----	----	----	----	----	----	----	----	----	----	----	----	----	----	----	----	----	----	----	----	----	----	----	----	----	----	----	----	----	----	----	----	----	----	----	----	----	----	----	----	----	----	----	----	----	----	----	----	----	----	----	----	----	----	----	----	----	----	----	----	----	----	----	----	----	----	----	----	----	----	----	----	----	----	----	----	----	----	----	----	-----

1	2	3	4	5	6	7	8	9	10	11	12	13	14	15	16	17	18	19	20	21	22	23	24	25	26	27	28	29	30	31	32	33	34	35	36	37	38	39	40	41	42	43	44	45	46	47	48	49	50	51	52	53	54	55	56	57	58	59	60	61	62	63	64	65	66	67	68	69	70	71	72	73	74	75	76	77	78	79	80	81	82	83	84	85	86	87	88	89	90	91	92	93	94	95	96	97	98	99	100
---	---	---	---	---	---	---	---	---	----	----	----	----	----	----	----	----	----	----	----	----	----	----	----	----	----	----	----	----	----	----	----	----	----	----	----	----	----	----	----	----	----	----	----	----	----	----	----	----	----	----	----	----	----	----	----	----	----	----	----	----	----	----	----	----	----	----	----	----	----	----	----	----	----	----	----	----	----	----	----	----	----	----	----	----	----	----	----	----	----	----	----	----	----	----	----	----	----	----	-----

1	2	3	4	5	6	7	8	9	10	11	12	13	14	15	16	17	18	19	20	21	22	23	24	25	26	27	28	29	30	31	32	33	34	35	36	37	38	39	40	41	42	43	44	45	46	47	48	49	50	51	52	53	54	55	56	57	58	59	60	61	62	63	64	65	66	67	68	69	70	71	72	73	74	75	76	77	78	79	80	81	82	83	84	85	86	87	88	89	90	91	92	93	94	95	96	97	98	99	100
---	---	---	---	---	---	---	---	---	----	----	----	----	----	----	----	----	----	----	----	----	----	----	----	----	----	----	----	----	----	----	----	----	----	----	----	----	----	----	----	----	----	----	----	----	----	----	----	----	----	----	----	----	----	----	----	----	----	----	----	----	----	----	----	----	----	----	----	----	----	----	----	----	----	----	----	----	----	----	----	----	----	----	----	----	----	----	----	----	----	----	----	----	----	----	----	----	----	----	-----

1	2	3	4	5	6	7	8	9	10	11	12	13	14	15	16	17	18	19	20	21	22	23	24	25	26	27	28	29	30	31	32	33	34	35	36	37	38	39	40	41	42	43	44	45	46	47	48	49	50	51	52	53	54	55	56	57	58	59	60	61	62	63	64	65	66	67	68	69	70	71	72	73	74	75	76	77	78	79	80	81	82	83	84	85	86	87	88	89	90	91	92	93	94	95	96	97	98	99	100
---	---	---	---	---	---	---	---	---	----	----	----	----	----	----	----	----	----	----	----	----	----	----	----	----	----	----	----	----	----	----	----	----	----	----	----	----	----	----	----	----	----	----	----	----	----	----	----	----	----	----	----	----	----	----	----	----	----	----	----	----	----	----	----	----	----	----	----	----	----	----	----	----	----	----	----	----	----	----	----	----	----	----	----	----	----	----	----	----	----	----	----	----	----	----	----	----	----	----	-----

1	2	3	4	5	6	7	8	9	10	11	12	13	14	15	16	17	18	19	20	21	22	23	24	25	26	27	28	29	30	31	32	33	34	35	36	37	38	39	40	41	42	43	44	45	46	47	48	49	50	51	52	53	54	55	56	57	58	59	60	61	62	63	64	65	66	67	68	69	70	71	72	73	74	75	76	77	78	79	80	81	82	83	84	85	86	87	88	89	90	91	92	93	94	95	96	97	98	99	100
---	---	---	---	---	---	---	---	---	----	----	----	----	----	----	----	----	----	----	----	----	----	----	----	----	----	----	----	----	----	----	----	----	----	----	----	----	----	----	----	----	----	----	----	----	----	----	----	----	----	----	----	----	----	----	----	----	----	----	----	----	----	----	----	----	----	----	----	----	----	----	----	----	----	----	----	----	----	----	----	----	----	----	----	----	----	----	----	----	----	----	----	----	----	----	----	----	----	----	-----

1	2	3	4	5	6	7	8	9	10	11	12	13	14	15	16	17	18	19	20	21	22	23	24	25	26	27	28	29	30	31	32	33	34	35	36	37	38	39	40	41	42	43	44	45	46	47	48	49	50	51	52	53	54	55	56	57	58	59	60	61	62	63	64	65	66	67	68	69	70	71	72	73	74	75	76	77	78	79	80	81	82	83	84	85	86	87	88	89	90	91	92	93	94	95	96	97	98	99	100
---	---	---	---	---	---	---	---	---	----	----	----	----	----	----	----	----	----	----	----	----	----	----	----	----	----	----	----	----	----	----	----	----	----	----	----	----	----	----	----	----	----	----	----	----	----	----	----	----	----	----	----	----	----	----	----	----	----	----	----	----	----	----	----	----	----	----	----	----	----	----	----	----	----	----	----	----	----	----	----	----	----	----	----	----	----	----	----	----	----	----	----	----	----	----	----	----	----	----	-----

1	2	3	4	5	6	7	8	9	10	11	12	13	14	15	16	17	18	19	20	21	22	23	24	25	26	27	28	29	30	31	32	33	34	35	36	37	38	39	40	41	42	43	44	45	46	47	48	49	50	51	52	53	54	55	56	57	58	59	60	61	62	63	64	65	66	67	68	69	70	71	72	73	74	75	76	77	78	79	80	81	82	83	84	85	86	87	88	89	90	91	92	93	94	95	96	97	98	99	100
---	---	---	---	---	---	---	---	---	----	----	----	----	----	----	----	----	----	----	----	----	----	----	----	----	----	----	----	----	----	----	----	----	----	----	----	----	----	----	----	----	----	----	----	----	----	----	----	----	----	----	----	----	----	----	----	----	----	----	----	----	----	----	----	----	----	----	----	----	----	----	----	----	----	----	----	----	----	----	----	----	----	----	----	----	----	----	----	----	----	----	----	----	----	----	----	----	----	----	-----

1	2	3	4	5	6	7	8	9	10	11	12	13	14	15	16	17	18	19	20	21	22	23	24	25	26	27	28	29	30	31	32	33	34	35	36	37	38	39	40	41	42	43	44	45	46	47	48	49	50	51	52	53	54	55	56	57	58	59	60	61	62	63	64	65	66	67	68	69	70	71	72	73	74	75	76	77	78	79	80	81	82	83	84	85	86	87	88	89	90	91	92	93	94	95	96	97	98	99	100
---	---	---	---	---	---	---	---	---	----	----	----	----	----	----	----	----	----	----	----	----	----	----	----	----	----	----	----	----	----	----	----	----	----	----	----	----	----	----	----	----	----	----	----	----	----	----	----	----	----	----	----	----	----	----	----	----	----	----	----	----	----	----	----	----	----	----	----	----	----	----	----	----	----	----	----	----	----	----	----	----	----	----	----	----	----	----	----	----	----	----	----	----	----	----	----	----	----	----	-----

1	2	3	4	5	6	7	8	9	10	11	12	13	14	15	16	17	18	19	20	21	22	23	24	25	26	27	28	29	30	31	32	33	34	35	36	37	38	39	40	41	42	43	44	45	46	47	48	49	50	51	52	53	54	55	56	57	58	59	60	61	62	63	64	65	66	67	68	69	70	71	72	73	74	75	76	77	78	79	80	81	82	83	84	85	86	87	88	89	90	91	92	93	94	95	96	97	98	99	100
---	---	---	---	---	---	---	---	---	----	----	----	----	----	----	----	----	----	----	----	----	----	----	----	----	----	----	----	----	----	----	----	----	----	----	----	----	----	----	----	----	----	----	----	----	----	----	----	----	----	----	----	----	----	----	----	----	----	----	----	----	----	----	----	----	----	----	----	----	----	----	----	----	----	----	----	----	----	----	----	----	----	----	----	----	----	----	----	----	----	----	----	----	----	----	----	----	----	----	-----

1	2	3	4	5	6	7	8	9	10	11	12	13	14	15	16	17	18	19	20	21	22	23	24	25	26	27	28	29	30	31	32	33	34	35	36	37	38	39	40	41	42	43	44	45	46	47	48	49	50	51	52	53	54	55	56	57	58	59	60	61	62	63	64	65	66	67	68	69	70	71	72	73	74	75	76	77	78	79	80	81	82	83	84	85	86	87	88	89	90	91	92	93	94	95	96	97	98	99	100
---	---	---	---	---	---	---	---	---	----	----	----	----	----	----	----	----	----	----	----	----	----	----	----	----	----	----	----	----	----	----	----	----	----	----	----	----	----	----	----	----	----	----	----	----	----	----	----	----	----	----	----	----	----	----	----	----	----	----	----	----	----	----	----	----	----	----	----	----	----	----	----	----	----	----	----	----	----	----	----	----	----	----	----	----	----	----	----	----	----	----	----	----	----	----	----	----	----	----	-----

1	2	3	4	5	6	7	8	9	10	11	12	13	14	15	16	17	18	19	20	21	22	23	24	25	26	27	28	29	30	31	32	33	34	35	36	37	38	39	40	41	42	4
---	---	---	---	---	---	---	---	---	----	----	----	----	----	----	----	----	----	----	----	----	----	----	----	----	----	----	----	----	----	----	----	----	----	----	----	----	----	----	----	----	----	---



GUERNSEY STATES
LE MARE DE CARTERET SCHOOLS PROJECT
Value Review Figures
13.11.2015

First Floor Plan of 960 pupil HS

Design Engine Drwg 1200 2001 – Stage D dated Sept 2015



BANK OF AMERICA, N.A. (Member FDIC)									
BANK OF AMERICA, N.A. (Member FDIC)									
BANK OF AMERICA, N.A. (Member FDIC)									
BANK OF AMERICA, N.A. (Member FDIC)									
BANK OF AMERICA, N.A. (Member FDIC)									
BANK OF AMERICA, N.A. (Member FDIC)									
BANK OF AMERICA, N.A. (Member FDIC)									
BANK OF AMERICA, N.A. (Member FDIC)									
BANK OF AMERICA, N.A. (Member FDIC)									
BANK OF AMERICA, N.A. (Member FDIC)									
BANK OF AMERICA, N.A. (Member FDIC)									
BANK OF AMERICA, N.A. (Member FDIC)									
BANK OF AMERICA, N.A. (Member FDIC)									
BANK OF AMERICA, N.A. (Member FDIC)									
BANK OF AMERICA, N.A. (Member FDIC)									
BANK OF AMERICA, N.A. (Member FDIC)									
BANK OF AMERICA, N.A. (Member FDIC)									
BANK OF AMERICA, N.A. (Member FDIC)									
BANK OF AMERICA, N.A. (Member FDIC)									
BANK OF AMERICA, N.A. (Member FDIC)									
BANK OF AMERICA, N.A. (Member FDIC)									
BANK OF AMERICA, N.A. (Member FDIC)									
BANK OF AMERICA, N.A. (Member FDIC)									
BANK OF AMERICA, N.A. (Member FDIC)									
BANK OF AMERICA, N.A. (Member FDIC)									
BANK OF AMERICA, N.A. (Member FDIC)									
BANK OF AMERICA, N.A. (Member FDIC)									
BANK OF AMERICA, N.A. (Member FDIC)									
BANK OF AMERICA, N.A. (Member FDIC)									
BANK OF AMERICA, N.A. (Member FDIC)									
BANK OF AMERICA, N.A. (Member FDIC)									
BANK OF AMERICA, N.A. (Member FDIC)									
BANK OF AMERICA, N.A. (Member FDIC)									
BANK OF AMERICA, N.A. (Member FDIC)									
BANK OF AMERICA, N.A. (Member FDIC)									
BANK OF AMERICA, N.A. (Member FDIC)									
BANK OF AMERICA, N.A. (Member FDIC)									
BANK OF AMERICA, N.A. (Member FDIC)									
BANK OF AMERICA, N.A. (Member FDIC)									
BANK OF AMERICA, N.A. (Member FDIC)									
BANK OF AMERICA, N.A. (Member FDIC)									
BANK OF AMERICA, N.A. (Member FDIC)									
BANK OF AMERICA, N.A. (Member FDIC)									
BANK OF AMERICA, N.A. (Member FDIC)									
BANK OF AMERICA, N.A. (Member FDIC)									
BANK OF AMERICA, N.A. (Member FDIC)									
BANK OF AMERICA, N.A. (Member FDIC)									
BANK OF AMERICA, N.A. (Member FDIC)									
BANK OF AMERICA, N.A. (Member FDIC)									
BANK OF AMERICA, N.A. (Member FDIC)									
BANK OF AMERICA, N.A. (Member FDIC)									
BANK OF AMERICA, N.A. (Member FDIC)									
BANK OF AMERICA, N.A. (Member FDIC)									
BANK OF AMERICA, N.A. (Member FDIC)									
BANK OF AMERICA, N.A. (Member FDIC)									
BANK OF AMERICA, N.A. (Member FDIC)									
BANK OF AMERICA, N.A. (Member FDIC)									
BANK OF AMERICA, N.A. (Member FDIC)									
BANK OF AMERICA, N.A. (Member FDIC)									
BANK OF AMERICA, N.A. (Member FDIC)									
BANK OF AMERICA, N.A. (Member FDIC)									
BANK OF AMERICA, N.A. (Member FDIC)									
BANK OF AMERICA, N.A. (Member FDIC)									
BANK OF AMERICA, N.A. (Member FDIC)									
BANK OF AMERICA, N.A. (Member FDIC)									
BANK OF AMERICA, N.A. (Member FDIC)									
BANK OF AMERICA, N.A. (Member FDIC)									
BANK OF AMERICA, N.A. (Member FDIC)									
BANK OF AMERICA, N.A. (Member FDIC)									
BANK OF AMERICA, N.A. (Member FDIC)									
BANK OF AMERICA, N.A. (Member FDIC)									
BANK OF AMERICA, N.A. (Member FDIC)									
BANK OF AMERICA, N.A. (Member FDIC)									
BANK OF AMERICA, N.A. (Member FDIC)									
BANK OF AMERICA, N.A. (Member FDIC)									
BANK OF AMERICA, N.A. (Member FDIC)									
BANK OF AMERICA, N.A. (Member FDIC)									
BANK OF AMERICA, N.A. (Member FDIC)									
BANK OF AMERICA, N.A. (Member FDIC)									
BANK OF AMERICA, N.A. (Member FDIC)									
BANK OF AMERICA, N.A. (Member FDIC)									
BANK OF AMERICA, N.A. (Member FDIC)									
BANK OF AMERICA, N.A. (Member FDIC)									
BANK OF AMERICA, N.A. (Member FDIC)									
BANK OF AMERICA, N.A. (Member FDIC)									
BANK OF AMERICA, N.A. (Member FDIC)									
BANK OF AMERICA, N.A. (Member FDIC)									
BANK OF AMERICA, N.A. (Member FDIC)									
BANK OF AMERICA, N.A. (Member FDIC)									
BANK OF AMERICA, N.A. (Member FDIC)									
BANK OF AMERICA, N.A. (Member FDIC)									
BANK OF AMERICA, N.A. (Member FDIC)									
BANK OF AMERICA, N.A. (Member FDIC)									
BANK OF AMERICA, N.A. (Member FDIC)									
BANK OF AMERICA, N.A. (Member FDIC)									
BANK OF AMERICA, N.A. (Member FDIC)									
BANK OF AMERICA, N.A. (Member FDIC)									
BANK OF AMERICA, N.A. (Member FDIC)									
BANK OF AMERICA, N.A. (Member FDIC)									
BANK OF AMERICA, N.A. (Member FDIC)									
BANK OF AMERICA, N.A. (Member FDIC)									
BANK OF AMERICA, N.A. (Member FDIC)									
BANK OF AMERICA, N.A. (Member FDIC)									
BANK OF AMERICA, N.A. (Member FDIC)									
BANK OF AMERICA, N.A. (Member FDIC)									
BANK OF AMERICA, N.A. (Member FDIC)									
BANK OF AMERICA, N.A. (Member FDIC)									
BANK OF AMERICA, N.A. (Member FDIC)									
BANK OF AMERICA, N.A. (Member FDIC)									
BANK OF AMERICA, N.A. (Member FDIC)									
BANK OF AMERICA, N.A. (Member FDIC)									
BANK OF AMERICA, N.A. (Member FDIC)									
BANK OF AMERICA, N.A. (Member FDIC)									
BANK OF AMERICA, N.A. (Member FDIC)									
BANK OF AMERICA, N.A. (Member FDIC)									
BANK OF AMERICA, N.A. (Member FDIC)									
BANK OF AMERICA, N.A. (Member FDIC)									
BANK OF AMERICA, N.A. (Member FDIC)									
BANK OF AMERICA, N.A. (Member FDIC)									
BANK OF AMERICA, N.A. (Member FDIC)									
BANK OF AMERICA, N.A. (Member FDIC)									
BANK OF AMERICA, N.A. (Member FDIC)									
BANK OF AMERICA, N.A. (Member FDIC)									
BANK OF AMERICA, N.A. (Member FDIC)									
BANK OF AMERICA, N.A. (Member FDIC)									
BANK OF AMERICA, N.A. (Member FDIC)									
BANK OF AMERICA, N.A. (Member FDIC)									
BANK OF AMERICA, N.A. (Member FDIC)									
BANK OF AMERICA, N.A. (Member FDIC)									
BANK OF AMERICA, N.A. (Member FDIC)									
BANK OF AMERICA, N.A. (Member FDIC)									
BANK OF AMERICA, N.A. (Member FDIC)									
BANK OF AMERICA, N.A. (Member FDIC)									
BANK OF AMERICA, N.A. (Member FDIC)									
BANK OF AMERICA, N.A. (Member FDIC)									
BANK OF AMERICA, N.A. (Member FDIC)									
BANK OF AMERICA, N.A. (Member FDIC)									
BANK OF AMERICA, N.A. (Member FDIC)									
BANK OF AMERICA, N.A. (Member FDIC)									
BANK OF AMERICA, N.A. (Member FDIC)									
BANK OF AMERICA, N.A. (Member FDIC)									
BANK OF AMERICA, N.A. (Member FDIC)									
BANK OF AMERICA, N.A. (Member FDIC)									
BANK OF AMERICA, N.A. (Member FDIC)									
BANK OF AMERICA, N.A. (Member FDIC)									
BANK OF AMERICA, N.A. (Member FDIC)									
BANK OF AMERICA, N.A. (Member FDIC)									
BANK OF AMERICA, N.A. (Member FDIC)									
BANK OF AMERICA, N.A. (Member FDIC)									
BANK OF AMERICA, N.A. (Member FDIC)									
BANK OF AMERICA, N.A. (Member FDIC)									
BANK OF AMERICA, N.A. (Member FDIC)									
BANK OF AMERICA, N.A. (Member FDIC)									
BANK OF AMERICA, N.A. (Member FDIC)									
BANK OF AMERICA, N.A. (Member FDIC)									
BANK OF AMERICA, N.A. (Member FDIC)									
BANK OF AMERICA, N.A. (Member FDIC)									
BANK OF AMERICA, N.A. (Member FDIC)									
BANK OF AMERICA, N.A. (Member FDIC)									
BANK OF AMERICA, N.A. (Member FDIC)									
BANK OF AMERICA, N.A. (Member FDIC)									
BANK OF AMERICA, N.A. (Member FDIC)									
BANK OF AMERICA, N.A. (Member FDIC)									
BANK OF AMERICA, N.A. (Member FDIC)									
BANK OF AMERICA, N.A. (Member FDIC)									
BANK OF AMERICA, N.A. (Member FDIC)									
BANK OF AMERICA, N.A. (Member FDIC)									
BANK OF AMERICA, N.A. (Member FDIC)									
BANK OF AMERICA, N.A. (Member FDIC)									
BANK OF AMERICA, N.A. (Member FDIC)									
BANK OF AMERICA, N.A. (Member FDIC)									
BANK OF AMERICA, N.A. (Member FDIC)									
BANK OF AMERICA, N.A. (Member FDIC)									
BANK OF AMERICA, N.A. (Member FDIC)									
BANK OF AMERICA, N.A. (Member FDIC)									
BANK OF AMERICA, N.A. (Member FDIC)									
BANK OF AMERICA, N.A. (Member FDIC)									
BANK OF AMERICA, N.A. (Member FDIC)									
BANK OF AMERICA, N.A. (Member FDIC)									
BANK OF AMERICA, N.A. (Member FDIC)									
BANK OF AMERICA, N.A. (Member FDIC)									
BANK OF AMERICA, N.A. (Member FDIC)									
BANK OF AMERICA, N.A. (Member FDIC)									
BANK OF AMERICA, N.A. (Member FDIC)									
BANK OF AMERICA, N.A. (Member FDIC)									
BANK OF AMERICA, N.A. (Member FDIC)									
B									

Figure 8



GUERNSEY STATES
LE MARE DE CARTERET SCHOOLS PROJECT
Value Review Figures
13.11.2015

Second Floor Plan of 600 pupil HS

Design Engine Drwg 1200 2002 600 – Stage D dated Sept 2015

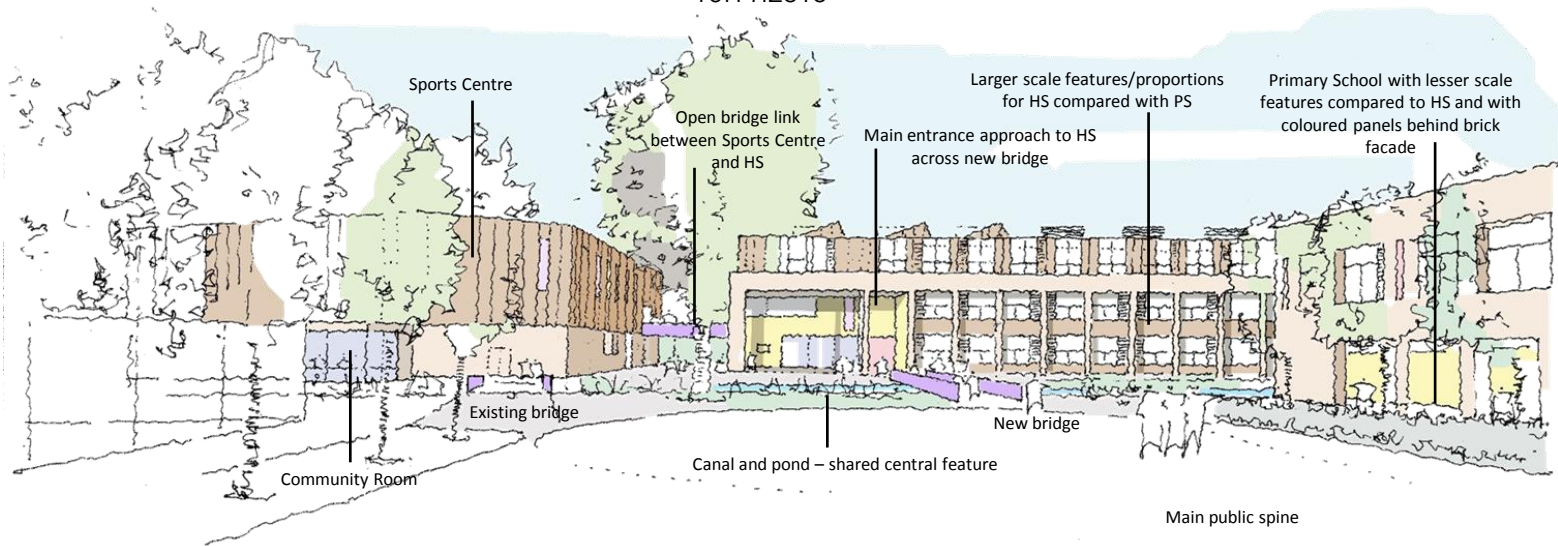


Figure 11

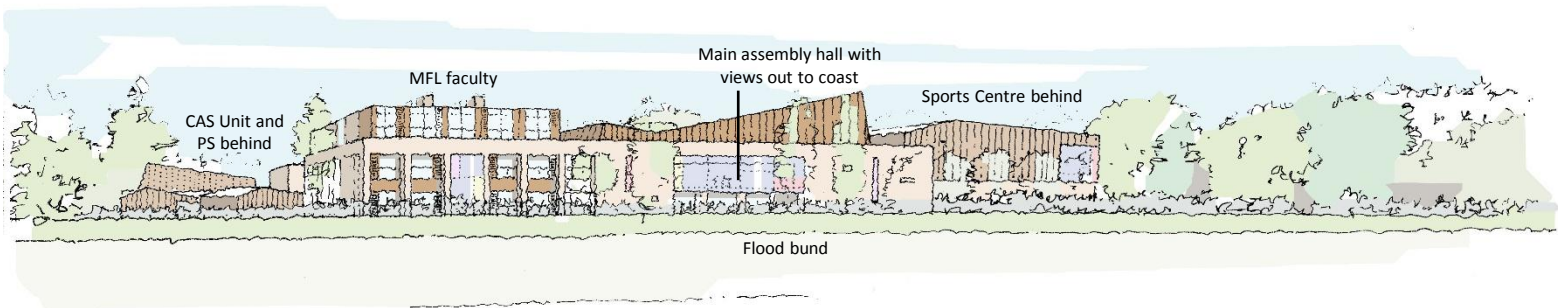


GUERNSEY STATES
LE MARE DE CARTERET SCHOOLS PROJECT
Value Review Figures
13.11.2015

Based on Design Engine Drwgs
dated Sept 2015



VIEW FROM CENTRAL SEMI-PUBLIC SPINE – looking west showing main HS entrance
for 960 pupil HS option



VIEW FROM PLAYING FIELDS – showing north and west elevations for 960 pupil HS option



VIEW FROM COACH EXIT ROAD – showing north and west elevations for 960 pupil HS option

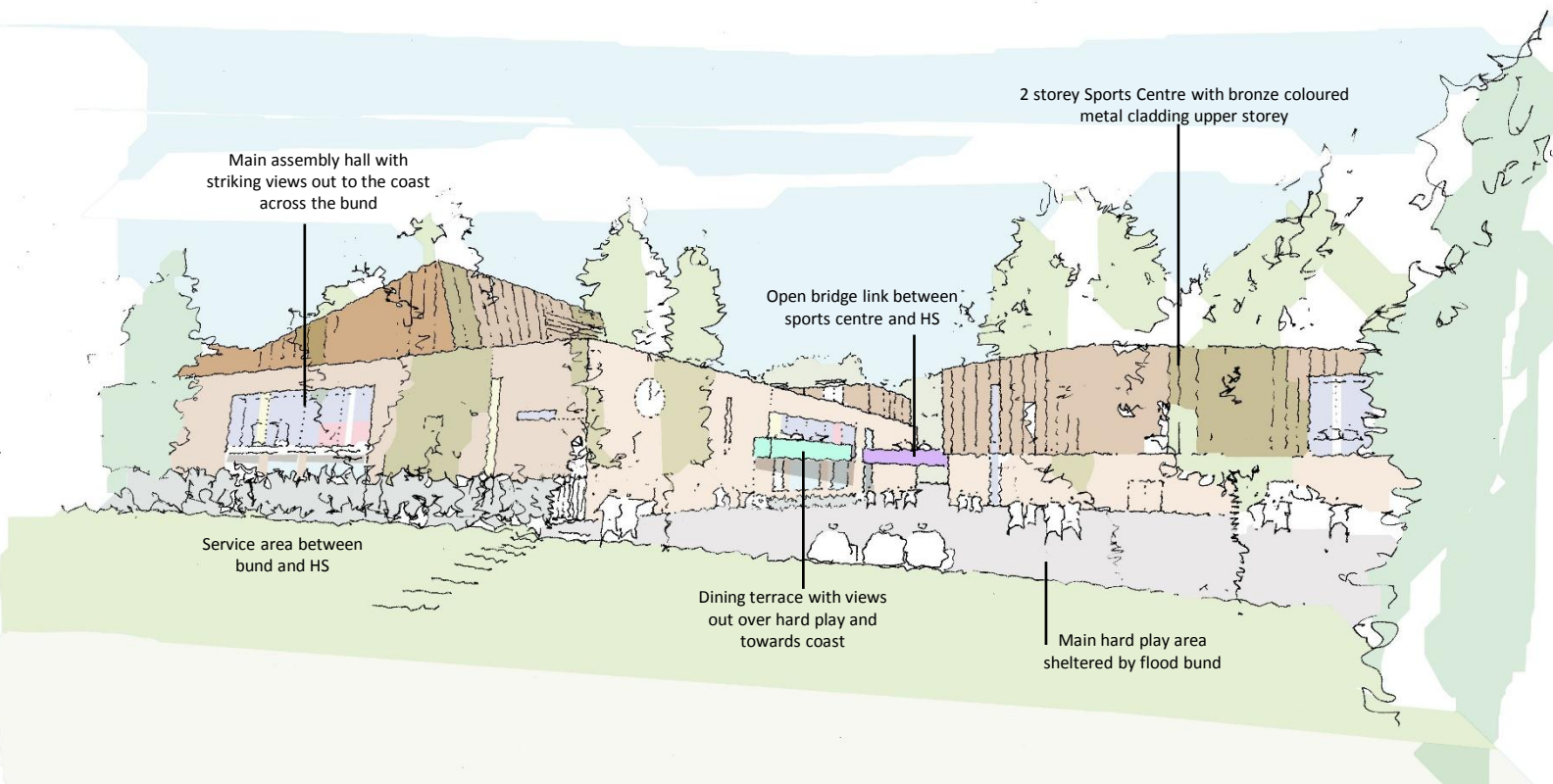


GUERNSEY STATES
LE MARE DE CARTERET SCHOOLS PROJECT
Value Review Figures
13.11.2015

Based on Design Engine Drwgs
dated Sept 2015



VIEW FROM COACH DROP OFF AREA – showing north elevation for 960 pupil HS option

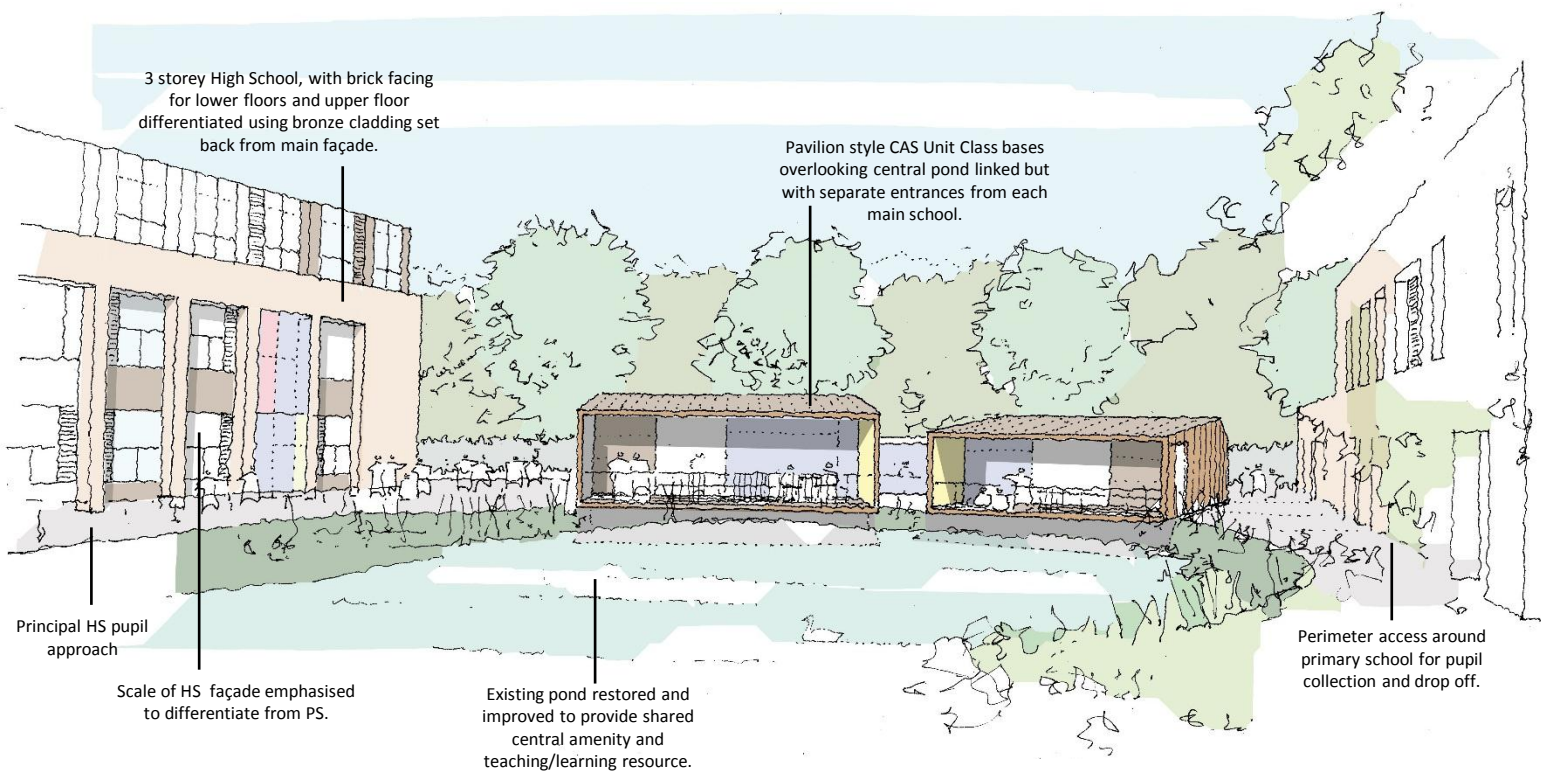


VIEW FROM TOP OF FLOOD BUND – showing west elevation for 960 pupil HS option



GUERNSEY STATES
LE MARE DE CARTERET SCHOOLS PROJECT
Value Review Figures
13.11.2015

Based on Design Engine Drwgs
dated Sept 2015



VIEW ACROSS CENTRAL POND – looking north for 960 pupil HS option