

STATES OF DELIBERATION

12th October, 2016

Proposition No. P2016/25

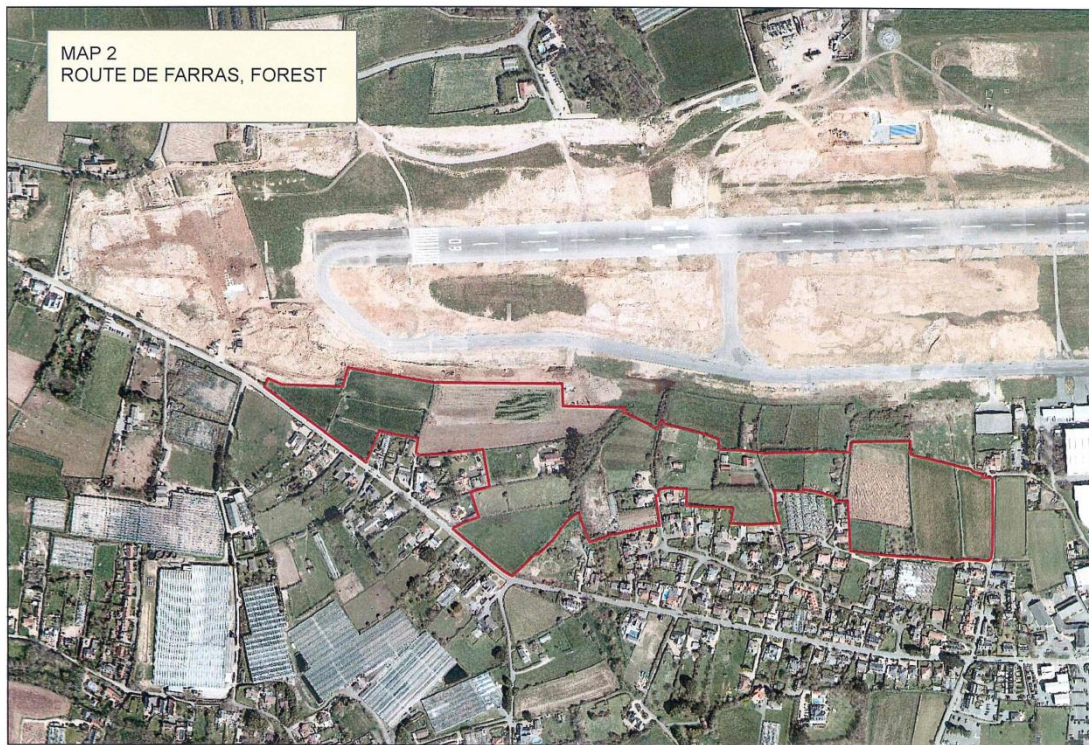
AMENDMENT

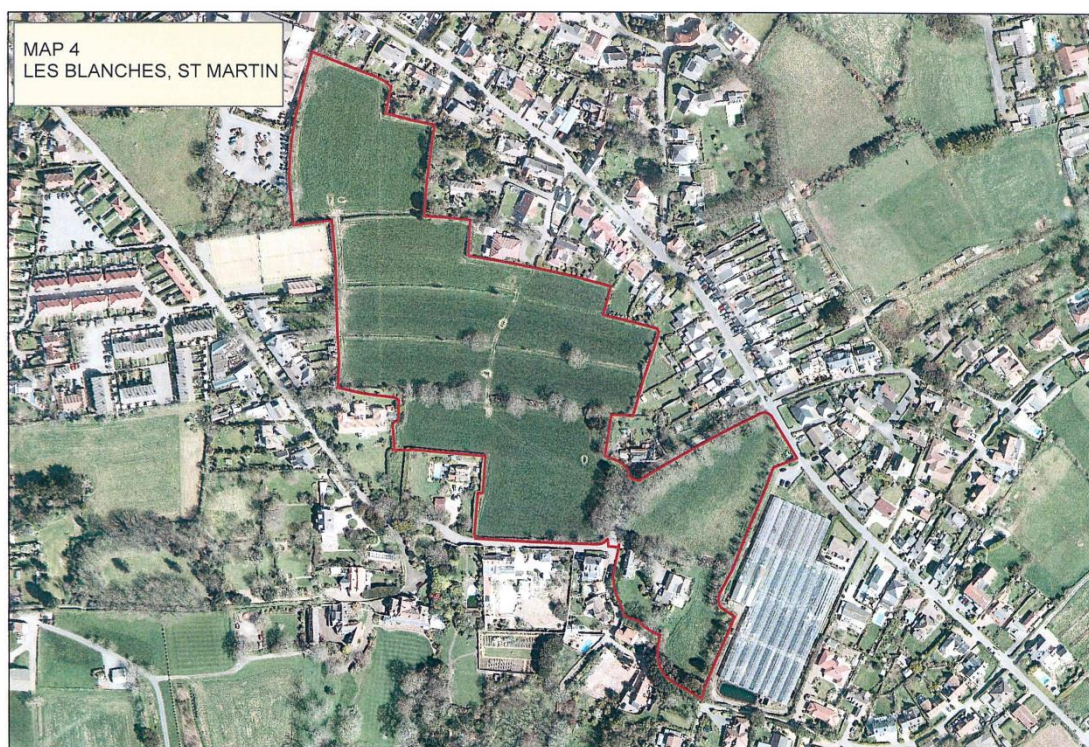
Proposed by: Deputy P J Roffey
Seconded by: Deputy H L de Sausmarez

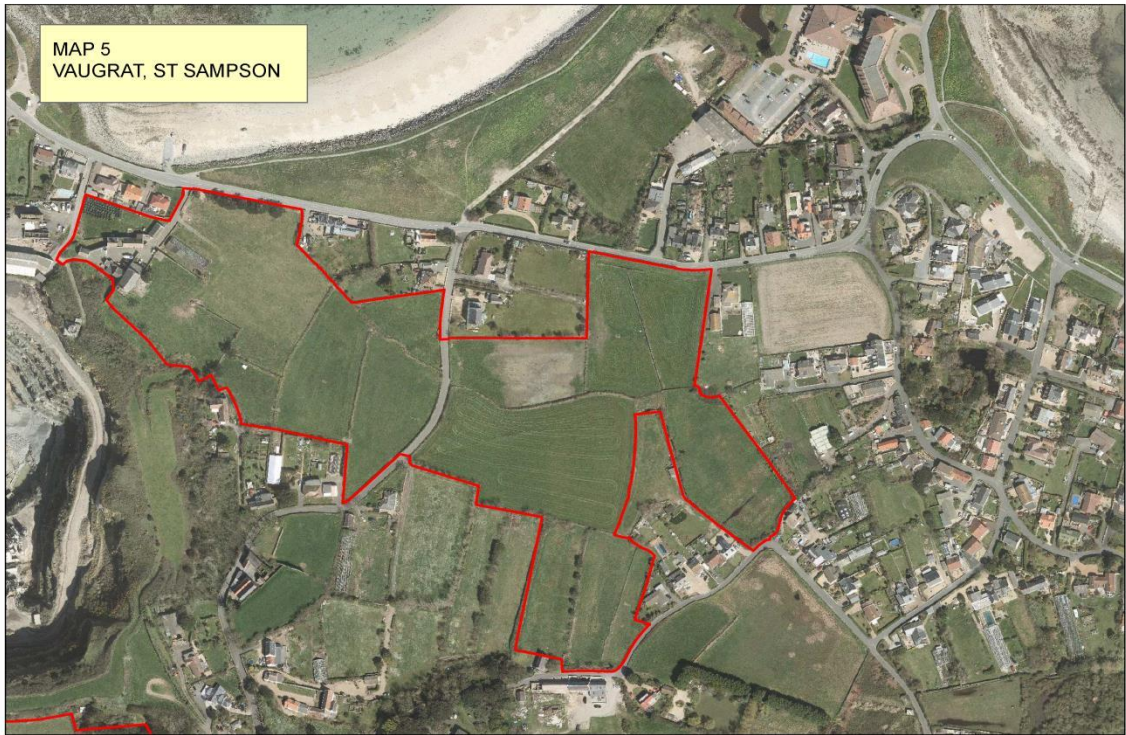
Development & Planning Authority

**The Island Development Plan – Development & Planning Authority
Recommendations**

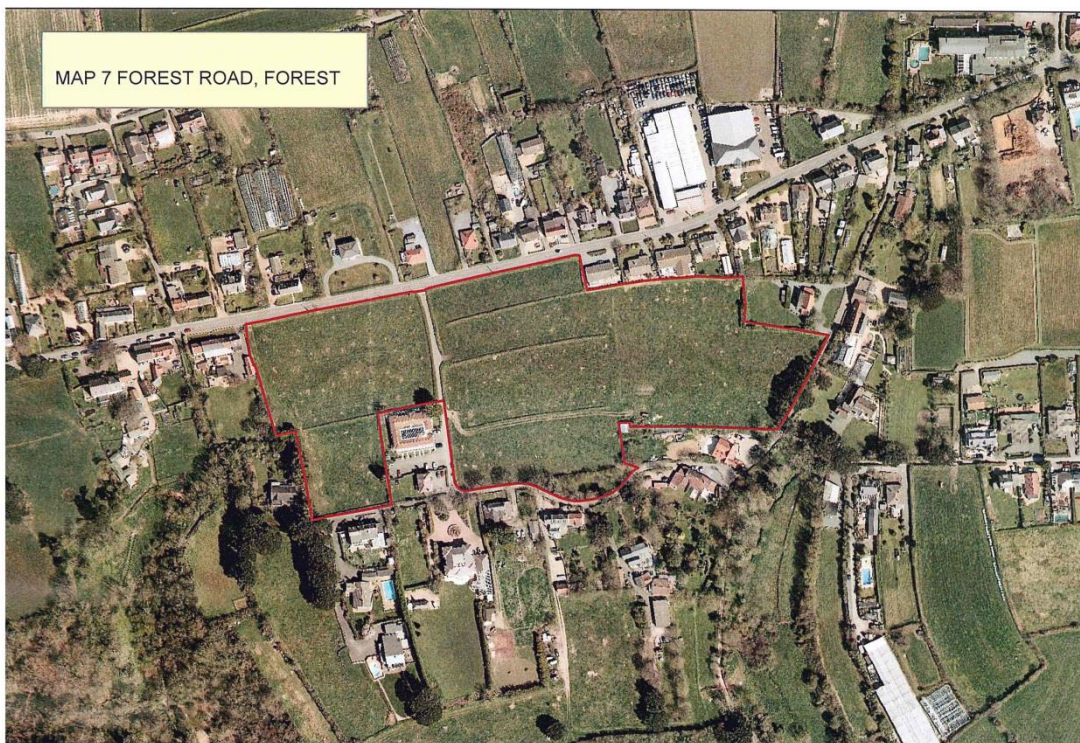
1. To insert at the end of the words in Proposition 1: “; but subject to the modifications that the Agriculture Priority Area (see the Proposals Map following page 353 of the Draft Island Development Plan at Appendix 1, and recommended amendments at insets 9 to 12 and 14 to 16 on pages 117 to 120 and 122 to 124 of Appendix 7) shall be extended by the inclusion of each of the following areas shown outlined in red on the maps annexed to this Proposition and labelled:
 - a) MAP 1 TORTEVAL;
 - b) MAP 2 ROUTE DE FARRAS, FOREST;
 - c) MAP 3 FONTENELLE, FOREST;
 - d) MAP 4 LES BLANCHES, ST MARTIN;
 - e) MAP 5 VAUGRAT, ST SAMPSON;
 - f) MAP 6 LES COTTES VALE/ST SAMPSON;
 - g) MAP 7 FOREST ROAD, FOREST”.
2. To insert at the end of the words in Proposition 1: “[but subject to the modification that] [and] the Agricultural Priority Area (see the Proposals Map following page 353 of the Draft Island Development Plan at Appendix 1, and recommended amendment at inset 13 on page 121 of Appendix 7) shall be contracted by the exclusion of the area shown outlined in red on the map annexed to this Proposition and labelled MAP 8 BRAYE DU VALLE, ST SAMPSON ROUTE MILITAIRE, VALE”.







MAP 7 FOREST ROAD, FOREST



MAP 8 BRAYE DU VALLE, ST SAMPSON
ROUTE MILITAIRE, VALE

