

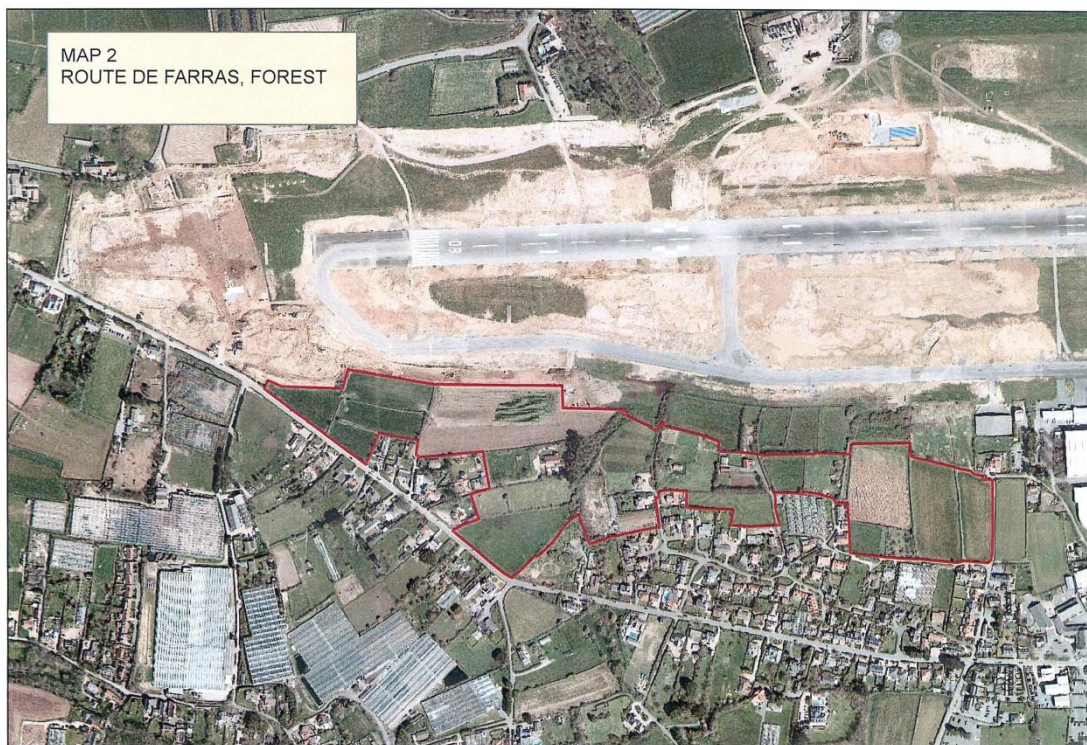


Date of Vote: 14th October, 2016

Billet d'État:	XXV of 2016
Article:	3
Proposition No.:	P. 2016/25
Department:	Development and Planning Authority
Subject:	The Island Development Plan – Development & Planning Authority Recommendations
Proposition type:	Amendment 1, part 1b
Proposed by:	Deputy P Roffey
Seconded by:	Deputy L de Sausmarez

1. *To insert at the end of the words in Proposition 1: “; but subject to the modifications that the Agriculture Priority Area (see the Proposals Map following page 353 of the Draft Island Development Plan at Appendix 1, and recommended amendments at insets 9 to 12 and 14 to 16 on pages 117 to 120 and 122 to 124 of Appendix 7) shall be extended by the inclusion of each of the following areas shown outlined in red on the maps annexed to this Proposition and labelled:*

b) MAP 2 ROUTE DE FARRAS, FOREST;





CARRIED: Pour:20 Contre :12 Ne vote pas :3 Absent:4

St. Peter Port South

Deputy Peter T. R. Ferbrache **C**
Deputy Jan Kuttelwascher **C**
Deputy Dawn A. Tindall **C**
Deputy Barry L. Brehaut **P**
Deputy Rhian H. Tooley **P**

St. Peter Port North

Deputy John A. B. Gollop **C**
Deputy Charles N. K. Parkinson **C**
Deputy Lester C. Queripel **C**
Deputy Michelle K. Le Clerc **N**
Deputy Marc P. Leadbeater **P**
Deputy Joseph I. Mooney **A**

St. Sampson

Deputy Lyndon S. Trott **A**
Deputy Paul R. Le Pelley **P**
Deputy Jennifer S. Merrett **C**
Deputy Gavin A. St Pier **A**
Deputy T. Jane Stephens **P**
Deputy Carl P. Meerveld **C**

Vale

Deputy Matthew J. Fallaize **P**
Deputy Mary M. Lowe **C**
Deputy Laurie B. Queripel **P**
Deputy Jeremy C. S. F. Smithies **C**
Deputy Sarah T. Hansmann Rouxel **P**

Castel

Deputy Richard H. Graham **P**
Deputy Christopher J. Green **P**
Deputy Barry J. E. Paint **P**
Deputy Mark H. Dorey **P**
Deputy Jonathan P. Le Tocq **A**

West

Deputy Alvord H. Brouard **C**
Deputy Andrea C. Dudley-Owen **P**
Deputy Emilie A. Yerby **P**
Deputy David de G. De Lisle **P**
Deputy Shane L. Langlois **P**

South-East

Deputy Heidi J. R. Soulsby **P**
Deputy H. Lindsay de Sausmarez **P**
Deputy Peter J. R. Roffey **P**
Deputy Robert G. Prow **P**
Deputy Victoria S. Oliver **C**

Alderney

Alderney Representative Louis E. Jean **N**
Alderney Representative S. D. Graham McKinley, OBE **N**