

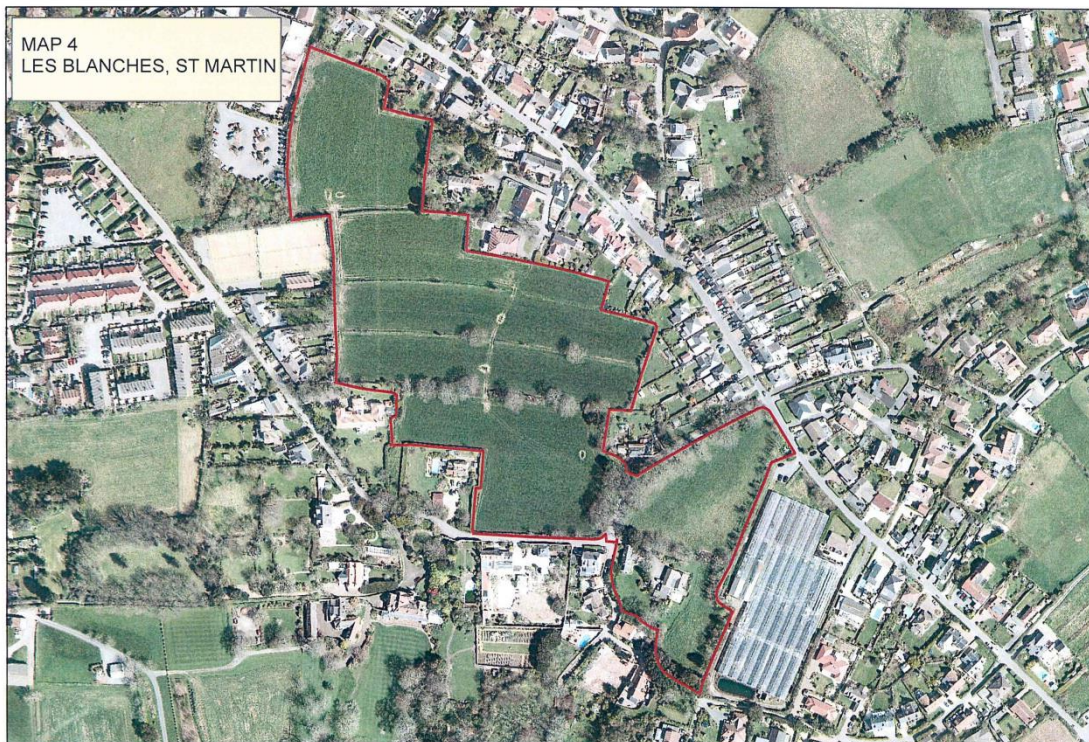


Date of Vote: 14<sup>th</sup> October, 2016

<b>Billet d'État:</b>	<b>XXV of 2016</b>
<b>Article:</b>	<b>3</b>
<b>Proposition No.:</b>	<b>P. 2016/25</b>
<b>Department:</b>	<b>Development and Planning Authority</b>
<b>Subject:</b>	<b>The Island Development Plan – Development &amp; Planning Authority Recommendations</b>
<b>Proposition type:</b>	<b>Amendment 1, part 1d</b>
<b>Proposed by:</b>	<b>Deputy P Roffey</b>
<b>Seconded by:</b>	<b>Deputy L de Sausmarez</b>

1. *To insert at the end of the words in Proposition 1: “; but subject to the modifications that the Agriculture Priority Area (see the Proposals Map following page 353 of the Draft Island Development Plan at Appendix 1, and recommended amendments at insets 9 to 12 and 14 to 16 on pages 117 to 120 and 122 to 124 of Appendix 7) shall be extended by the inclusion of each of the following areas shown outlined in red on the maps annexed to this Proposition and labelled:*

d) *MAP 4 LES BLANCHES, ST MARTIN;*





**CARRIED: Pour:26 Contre :4 Ne vote pas :5 Absent:4**

**St. Peter Port South**

Deputy Peter T. R. Ferbrache **P**  
Deputy Jan Kuttelwascher **P**  
Deputy Dawn A. Tindall **C**  
Deputy Barry L. Brehaut **P**  
Deputy Rhian H. Tooley **P**

**St. Peter Port North**

Deputy John A. B. Gollop **P**  
Deputy Charles N. K. Parkinson **P**  
Deputy Lester C. Queripel **N**  
Deputy Michelle K. Le Clerc **N**  
Deputy Marc P. Leadbeater **P**  
Deputy Joseph I. Mooney **A**

**St. Sampson**

Deputy Lyndon S. Trott **A**  
Deputy Paul R. Le Pelley **P**  
Deputy Jennifer S. Merrett **C**  
Deputy Gavin A. St Pier **A**  
Deputy T. Jane Stephens **P**  
Deputy Carl P. Meerveld **P**

**Vale**

Deputy Matthew J. Fallaize **N**  
Deputy Mary M. Lowe **C**  
Deputy Laurie B. Queripel **P**  
Deputy Jeremy C. S. F. Smithies **P**  
Deputy Sarah T. Hansmann Rouxel **P**

**Castel**

Deputy Richard H. Graham **P**  
Deputy Christopher J. Green **P**  
Deputy Barry J. E. Paint **P**  
Deputy Mark H. Dorey **P**  
Deputy Jonathan P. Le Tocq **A**

**West**

Deputy Alvord H. Brouard **C**  
Deputy Andrea C. Dudley-Owen **P**  
Deputy Emilie A. Yerby **N**  
Deputy David de G. De Lisle **P**  
Deputy Shane L. Langlois **P**

**South-East**

Deputy Heidi J. R. Soulsby **P**  
Deputy H. Lindsay de Sausmarez **P**  
Deputy Peter J. R. Roffey **P**  
Deputy Robert G. Prow **P**  
Deputy Victoria S. Oliver **P**

**Alderney**

Alderney Representative Louis E. Jean **P**  
Alderney Representative S. D. Graham McKinley, OBE **N**