



## Miss Ogier

Lives by Beaucette Marina in the Vale.

### Her Children



## Mary

In September 2017 will be in Year 2 at Vale Primary School



## Jane

In September 2017 will be in Reception at Vale Primary School

### Under the Committee's Proposals

**Mary** will transfer to the secondary school that pupils feed into from her primary school when she starts Year 7 in September 2022. In Mary's case, pupils from Vale Primary feed into St Sampson's High School. Mary will be taught in ability 'sets' for some subjects where beneficial. This will ensure young people are stretched and challenged and also provided with additional support, if needed.

She will not sit the 11+ selection tests.

If Mary wants to go to The Ladies' College or Blanchelande for her secondary and/or post-16 education, her family will need to pay the fees.

If Mary wants to continue in full-time post-16 education in 2027 she will attend the new Post 16 College on the Les Varendes site where a wide range of qualifications, courses and enrichment opportunities will be available. If she wants to do an apprenticeship or other part-time training course she will attend the new Training College on Les Ozouets site.

**Jane** will transfer to the secondary school that pupils feed into from her primary school when she starts Year 7 in September 2024. In Jane's case, pupils from Vale Primary feed into St Sampson's High School.

Jane will be taught in ability 'sets' for some subjects where beneficial. This will ensure young people are stretched and challenged and also provided with additional support, if needed.

She will not sit the 11+ selection tests.

If Jane wants to go to The Ladies' College or Blanchelande for her secondary and/or post-16 education, her family will need to pay the fees.

Jane will have the same options for post-16 education as Mary.



## Mr and Mrs Le Page

Live by the Cup and Saucer in La Houquette Primary School catchment.

### Their Children



#### Tim

In September 2017 will be in Year 8 at the Grammar School & Sixth Form Centre



#### John

In September 2017 will be in Year 5 at La Houquette Primary School



#### Joanna

In September 2017 will be in Year 2 at La Houquette Primary School

### Under the Committee's Proposals

**Tim** will continue to be taught in his selective year group on the Grammar School site until he completes Year 11 (GCSEs) in July 2021.

He can then decide which pathway to follow for post-16 education, apprenticeship or employment. This will either be A Levels/IB at the current Sixth Form Centre or a BTEC/applied/vocational course at the current College of Further Education.

**John** is part of the first year group not to sit the 11+ selection tests and will be allocated a place at his catchment High School – this will be the new school formed by the amalgamation of La Mare de Carteret High and the former Grammar School.

When he starts his secondary education, John will attend the Les Varendes site for Year 7 and stay there for Year 8 with all the children from the partner primary schools that feed into the new secondary School.

John and all the other pupils will move into the new secondary School due to be built on La Mare de Carteret site and opened in September 2021. John will be taught in ability 'sets' for some subjects where beneficial. This will ensure young people are challenged and also provided with additional support, if needed.

If John wants to go to Elizabeth College or Blanchelande for his secondary and/or post-16 education, his family will need to pay the fees.

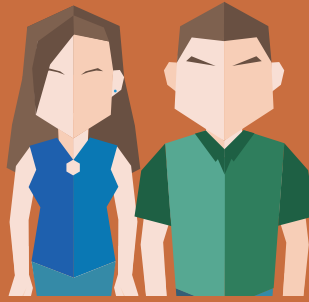
If John wants to continue in full-time post-16 education he will attend the new Post 16 College on the Les Varendes site where a wide range of qualifications, courses and enrichment opportunities will be available. If he wants to do an apprenticeship or other part-time training course he will attend the new Training College on Les Ozouets site.

**Joanna** will not take the 11+ selection tests and will transfer to her allocated secondary school to start Year 7 in September 2022. This will be the new school due to be built on the La Mare de Carteret site. The new buildings should be completed by the time Joanna moves into secondary education.

Joanna will be taught in ability 'sets' for some subjects where beneficial. This will ensure young people are stretched and challenged and also provided with additional support, if needed.

If Joanna wants to go to The Ladies' College or Blanchelande for her secondary education, her family will need to pay the fees.

Joanna will have the same options as John for post-16 education.



## Mr Smith & Ms Brown

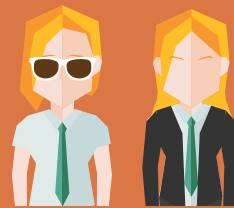
Live in the Castel by Vazon beach. Both have children from previous marriages who split their time between parents. Mr Smith and Ms Brown have parental responsibility for their children.

### Their Children



#### Andrew

in September 2017 will be in Year 9 at Les Beaucamps High



#### Rachel and Emma

in September 2017 the twins will be in Year 6 at Castel Primary

### Under the Committee's Proposals

**Andrew** will complete his GCSE or equivalent courses at Les Beaucamps High. Once he has his results in August 2020, he will be able to choose whether to continue in post-16 education, attending Les Varendes site if he wants to study A levels, or International Baccalaureate or the College of Further Education for a full-time BTEC course, apprenticeship or other part-time training.

**Rachel and Emma** will sit the 11+ selection tests in January 2018 when they are in Year 6 (if their parents wish them to) and will be allocated a place at either The Ladies' College/Blanchelande College, The Grammar School or their catchment High School – Les Beaucamps High - depending on how they score in the 11+ selection process.

They will start Year 7 at their new school(s) in September 2018  
If Rachel and/or Emma are selected for a place at the Grammar School they will continue to be taught in a selective year group until they complete Year 11 (GCSEs) in July 2023. Whichever choice of courses/ qualifications they make for their post 16 studies (Sixth Form or College of FE) these will be maintained until they are completed.

If Rachel and/or Emma are selected for a place at The Ladies' College or Blanchelande College then this place will be funded by the States until they complete their education either after completing Year 11 or completing Year 13 (NB at this time Blanchelande does not have a sixth form).