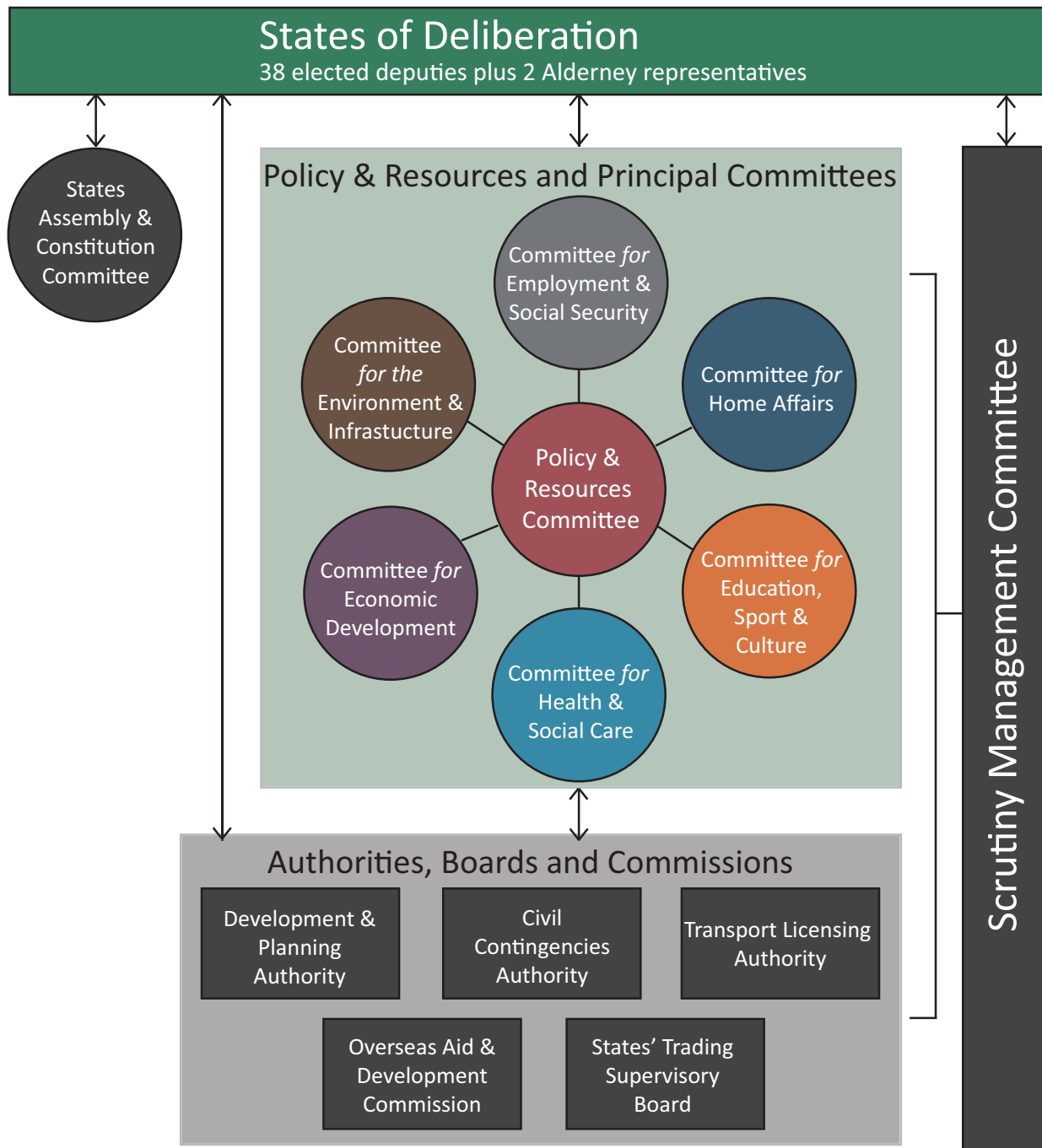


1. Introduction

A reformed structure of government was implemented in May 2016. The key changes included a reduction in the number of deputies to 38 and a reduction in the number of committees. The new structure is shown below and more detail is provided on the next pages.



1. Introduction

The responsibilities of each Committee, Authority, Board and Commission are detailed over the next pages (see www.gov.gg/constitution for further information, including committee members and their contact details).

Senior Committee

Policy & Resources

Responsible for leadership and co-ordination of the work of the States, including developing and promoting the States' overall policy objectives and leading the policy planning process. This includes the following service areas:

- Treasury
- Strategy and Policy
- Income Tax
- Cadastre
- Regulatory and Financial Crime Policy
- External and Constitutional Relations

The following corporate service areas are also included:

- Procurement
- Corporate Communications
- Data and Analysis
- Finance
- Human Resources
- Internal Audit
- Vendor Services
- Corporate Customer Services
- Information Systems and Services

1. Introduction

Principal Committees

Home Affairs

Responsible for crime prevention, law enforcement, justice policy, immigration, population management, prison and probation, fire and rescue, trading standards, data protection, emergency planning, civil defence, lotteries and gambling, electoral roll. These were previously mainly functions of Home and Housing. This includes the following service areas:

- Population Management
- Fire and Rescue Service
- Trading Standards
- Prison Service
- Family Court Advisory Service
- Probation Service
- Registrar-General of Electors
- Joint Emergency Services Control Centre

Health & Social Care

Responsible for adult social care, welfare and protection of children, young people and families, prevention, diagnosis and treatment of acute and chronic diseases, illnesses and conditions, mental health, care of the elderly, health promotion, environmental health, public health. These were previously mainly functions of Health and Social Services. This includes the following service areas:

- Adult Community Services
- Hospital Services
- Public Health Services
- Children and Family Community Services

The Environment & Infrastructure

Responsible for planning appeals, strategic use plan, agriculture, farms, animal imports/exports, states vet, vale common, traffic signs and lines, bus contract, public service vehicles, driving tests, driving licences, vehicle registrations, road closures, road repairs, renewable energy, waste policy, marine policy, water policy, environmental policy, traffic policy and planning policy. These were previously mainly functions of Environment Department. This includes the following service areas:

- Traffic and Highway Services
- Renewable Energy
- Agriculture, Countryside and Land Management Services
- Driver and Vehicle Licensing

Principal Committees (continued)

Employment & Social Security

Responsible for social insurance, pensions, social housing, supplementary benefit, housing benefit, long-term care insurance, health and safety in the workplace, social inclusion including disability, industrial relations, legal aid. These were previously mainly functions of Social Security and Housing. This includes the following service areas:

- Employment Relations Service
- Health and Safety Executive
- Housing
- Prescribing Support Unit
- Social Security

Education, Sport & Culture

Responsible for education, apprenticeships, sport, leisure and recreation, libraries, museums, galleries and heritage, archaeology, the arts, island archives, civic celebrations including Liberation Day. These were previously mainly functions of Education and Culture & Leisure. This includes the following service areas:

- Culture and Heritage
- Education Services
- Island Archives
- Sport and Recreation

Economic Development

Responsible for promotion and development of all sectors of business (e.g. tourism, construction, horticulture, retail, digital, manufacturing, finance), securing and promoting air and sea links, competition and regulation, broadcasting and media, living marine resources (e.g. fishing). These were previously mainly functions of Commerce & Employment. This includes the following service areas:

- Broadcasting Services
- Civil Aviation Office
- Sea Fisheries
- Marketing and Tourism
- Business Innovation and Skills
- Finance Sector Development