
ADOPTION SUPPORT SERVICES

The Reparative Care Team has overall responsibility for the provision of post adoption support services and is developing a range of services for adoptive families, adopted children, adopted adults and birth family members affected by adoption.

This leaflet is an overall guide to the support you are able to access through the team.

Fuller information about each service area is available on request and an adoption assessment of support needs can be undertaken to inform any intervention plan of service provision.

OUR STORY

The Children & Young People's Plan 2017- 2022 outlines the way in which the Children & Family Community Services will meet the requirements of the Children's Law (2008).

The Reparative Care Team forms part of the Corporate Parenting Strategy and Children & Young People's Plan in line with the 2020 vision.

Additionally the Adoption Reform Law will require a legal framework around adoption support services provided to adopters, adopted children, their siblings and close birth family members.



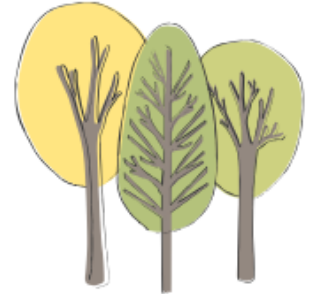
Swissville,
Rohais
St Peter Port,
Guernsey
GY1 1FB



01481 723182



Reparative.CareTeam@gov.gg



REPARATIVE CARE
TEAM

HELPING YOU GROW

ADOPTION SUPPORT SERVICES



States of Guernsey
Children and Family
Community Services

ADOPTERS AND ADOPTED CHILDREN

The Reparative Care Team recognises parenting a child who has been placed for adoption can sometimes be more difficult than anticipated and we fully recognise that adoptive children and their families may require support at different stages of parenting.

The team are able to complete an adoption assessment of support needs to inform the most appropriate intervention package is provided which may include the following:

- Parent Consultations by a Principle Therapeutic Practitioner or Clinical Psychologist.
- Access to regular training events via the Reparative Care Team or Family Placement Service Learning and Development Programme.
- Access to support and social events via the Guernsey Foster Care & Adoption Association.
- Adoption Support Groups.
- Letter Box Service.
- Facilitating post adoption contact where appropriate.
- Ongoing advice via telephone and email and signposting to other relevant services.
- Adoption social work support visits.
- Access to the Reparative Care Team resource library.

THERAPEUTIC INTERVENTIONS FOR ADOPTED CHILDREN

- Dyadic Developmental Psychotherapy (DDP)
- Psychotherapy
- Eye Movement Desensitisation and Reprocessing (EMDR)
- Cognitive Behavioural Therapy
- Art Psychotherapy
- NSPCC Letting the Future In (child sexual abuse therapy)
- Therapeutic Life Story Work



BIRTH RELATIVE SUPPORT SERVICE

The Reparative Care Team holds responsibility for the Birth Relative Support Service and we recognise and understand that losing a child to adoption has a long term impact upon many people who may require ongoing support.

Full information about this area of service delivery is available on request or in the Birth Relative Support leaflet

ADOPTED ADULTS SERVICES

- To provide a birth records counselling service to adopted adults, offering advice, information and counselling to those wishing to access adoption records.
- Advice and information via telephone or email.
- Signposting and support in intermediary and reunion work.