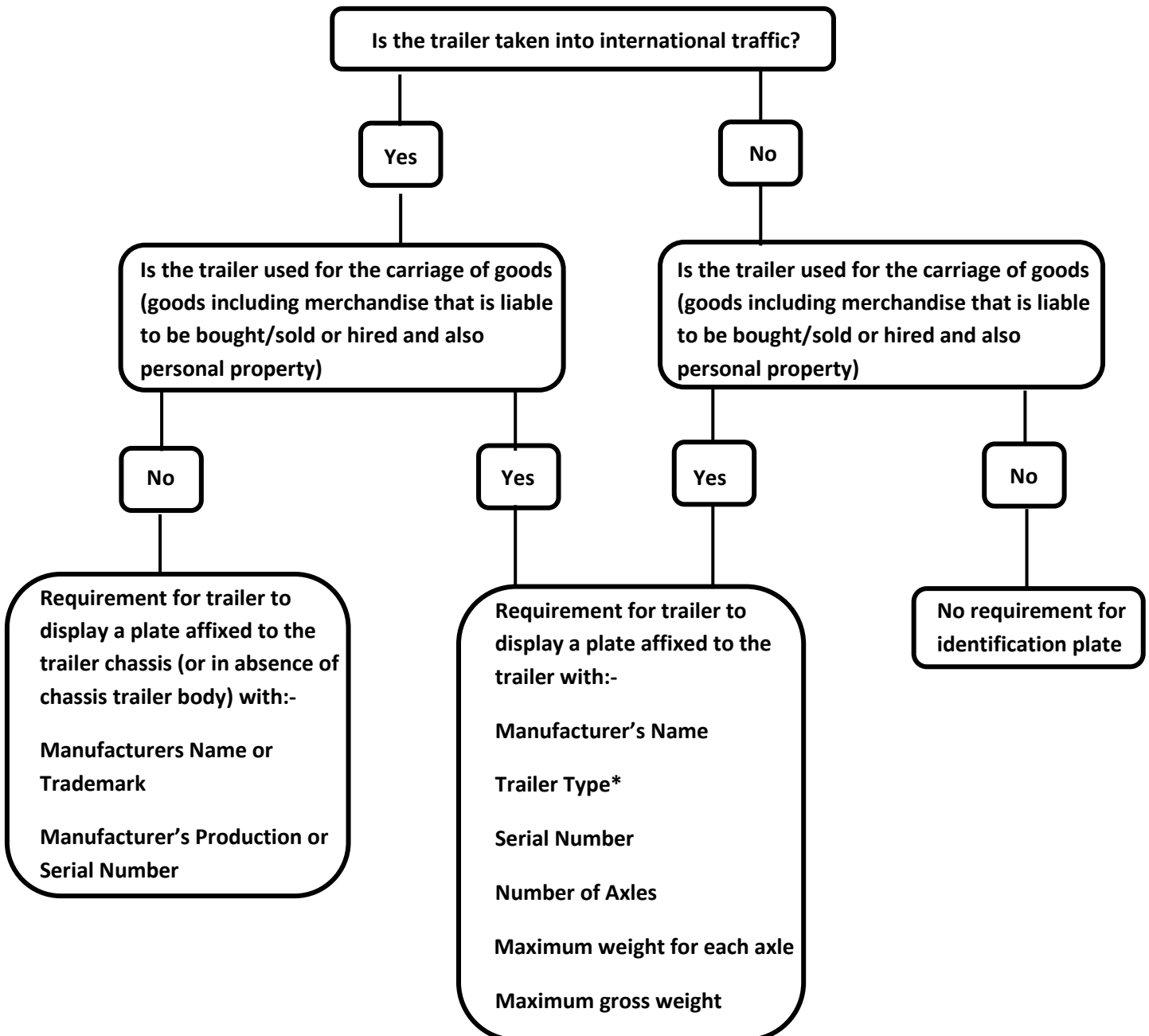


## Identification Plates for Trailers

### The Road Traffic (Construction & Use of Motor Vehicle) Amendment Ordinance, 1971 (as amended)



\*Trailer type is used for determining its maximum permitted speed under the Road Traffic (Speed Limits & Trials) Ordinance, 1987

- Metal Wheeled Trailer – 8mph
- Four wheeled heavy trailer of the low loader type – 12mph
- Caravan/horse/cattle/2 wheeled trailer – 20mph