

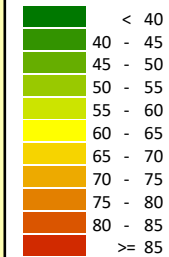
Project: Longue Hougue South
Project-No. PB5312

Figure A13.10

Construction Impact
Option 2 Western Section Start Point
Night LAeq,T (dBA)

Calculation in 1.5 m above ground

Levels
in dB(A)

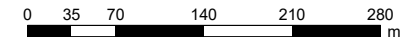


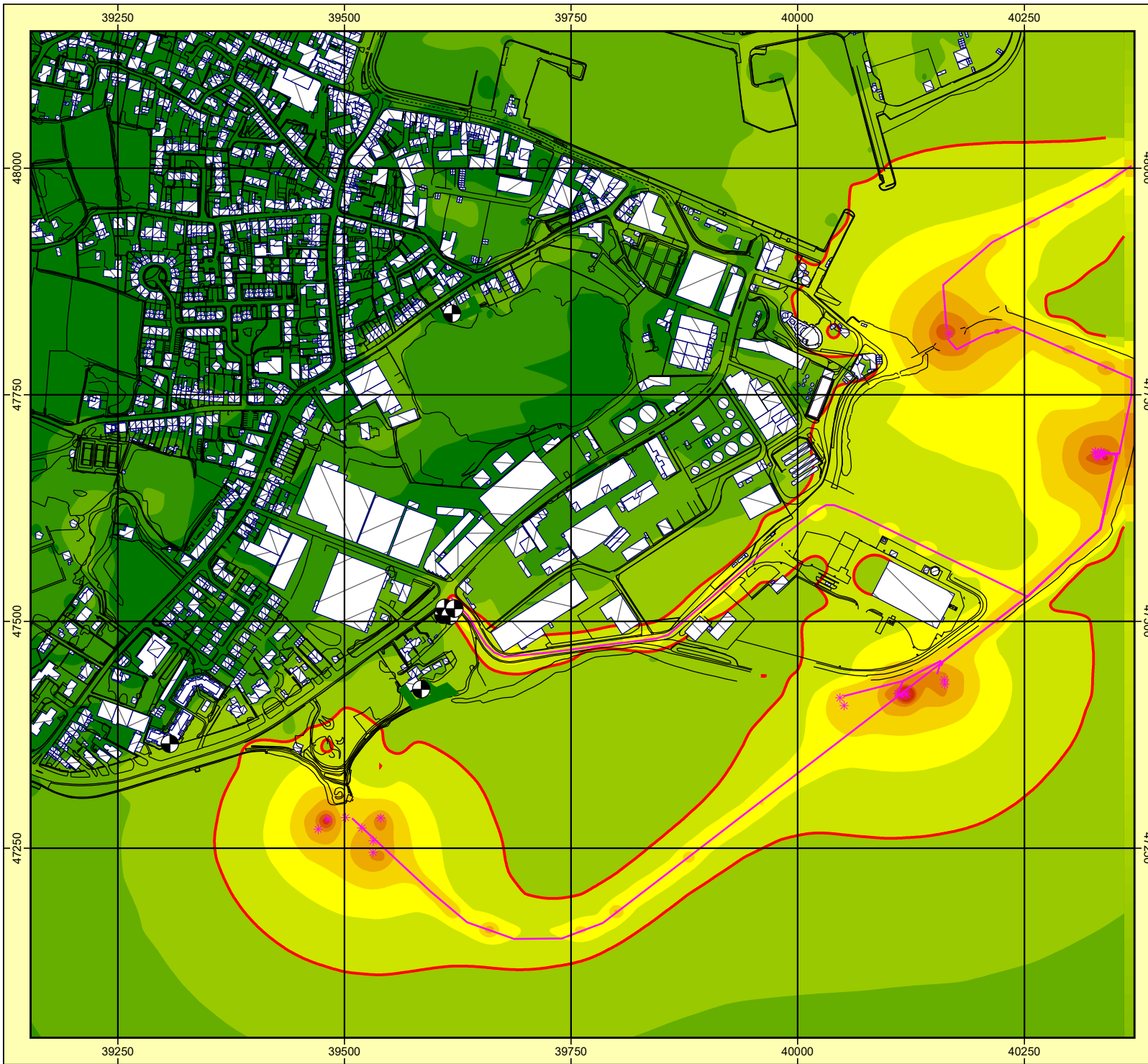
Signs and symbols

- Main building
- Point receiver
- Point source
- Line source
- 55dBA ECO Limit



Length scale 1:6000





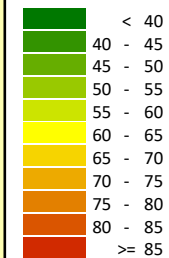
Project: Longue Hougue South
Project-No. PB5312

Figure A13.11

Construction Impact
Option 2 Both Ends Simultaneously
Daytime LAeq,T (dBA)

Calculation in 1.5 m above ground

Levels
in dB(A)

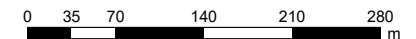


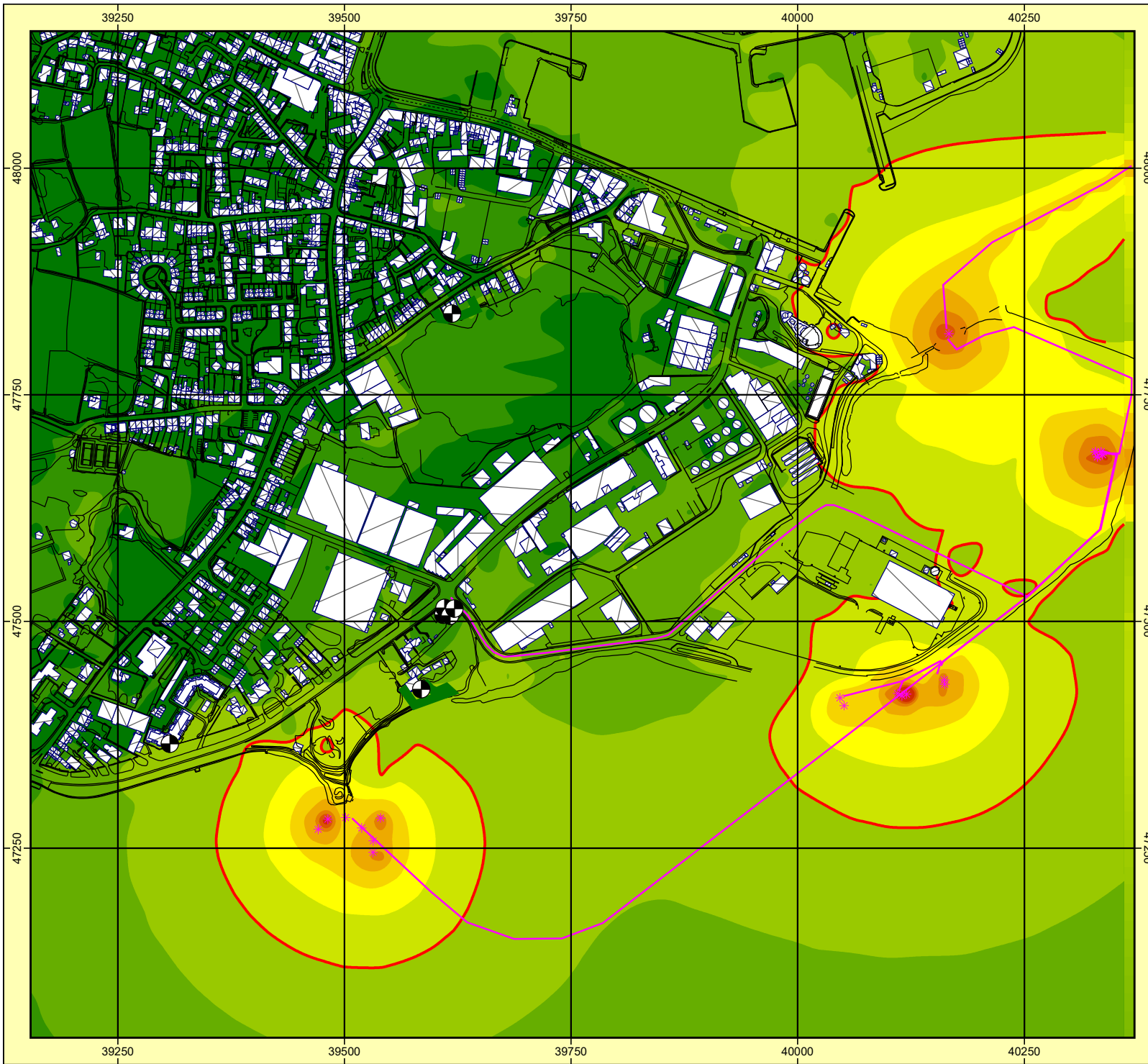
Signs and symbols

- Main building
- Point receiver
- Point source
- Line source
- 55dBA ECO Limit



Length scale 1:6000





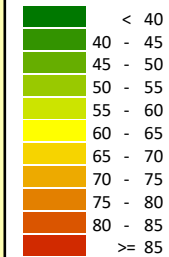
Project: Longue Hougue South
Project-No. PB5312

Figure A13.12

Construction Impact
Option 2 Both Ends Simultaneously
Night LAeq,T (dBA)

Calculation in 1.5 m above ground

Levels
in dB(A)



Signs and symbols

- Main building
- Point receiver
- Point source
- Line source
- 55dBA ECO Limit



Length scale 1:6000

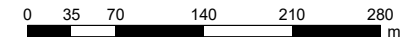
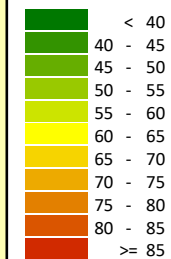


Figure A13.13

Road Traffic Impact - Construction 2021 Baseline L10,(18h) dBA

Calculation in 4 m above ground

Levels in dB(A)



Signs and symbols

- Main building
- Point receiver
- Road



Length scale 1:10000

