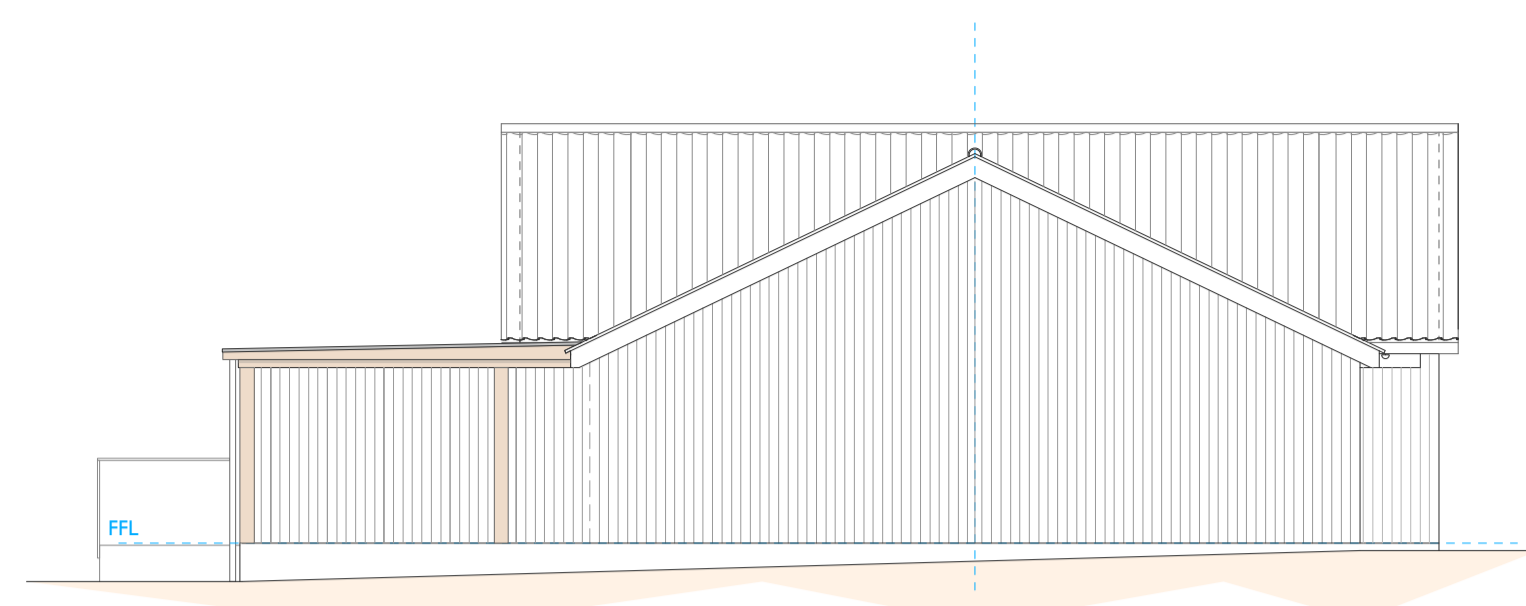


EXISTING FINISHES:

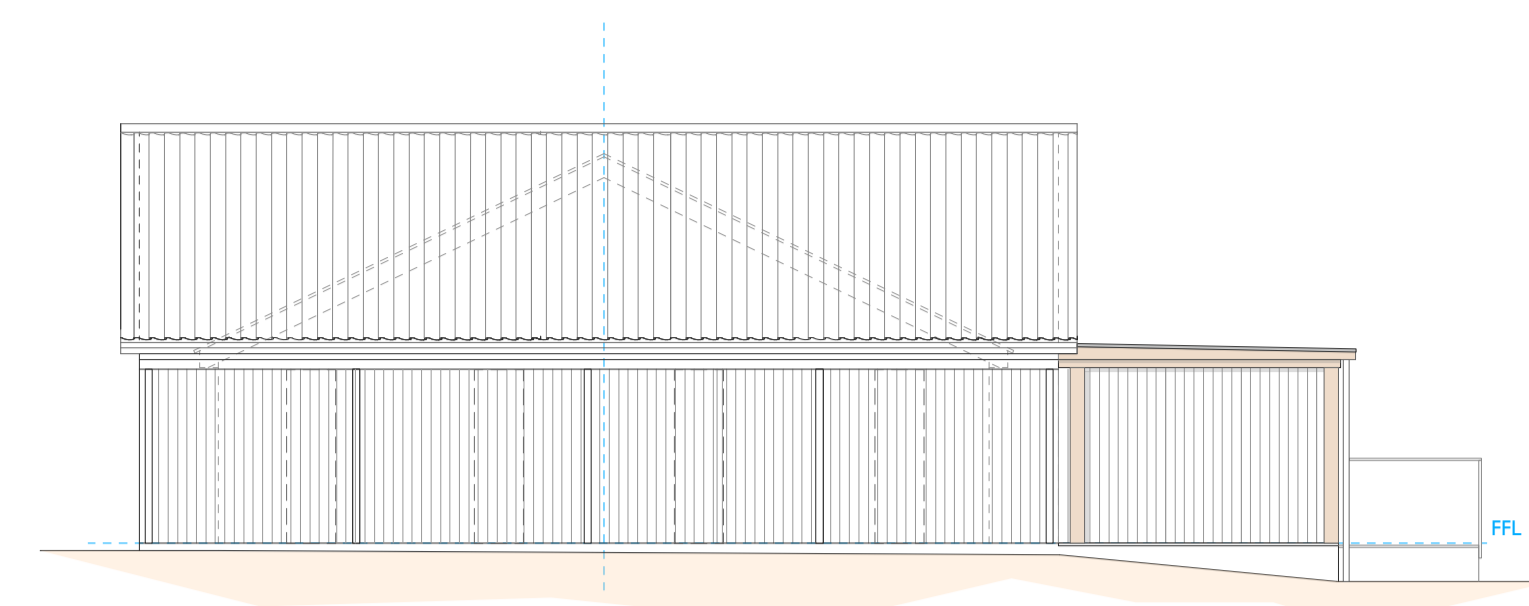
- PANTILE ROOF
- GLAZED ROOF CENTRAL SECTION
- SINGLE PLY MEMBRANE FLAT ROOF
- TIMBER CLAD WALLS
- TIMBER WINDOWS
- TIMBER DOORS
- BOUNDARY, SHRUBS, TREES AND EARTH BANKS

- SITE BOUNDARY
- EXISTING BUILDING
- NEW BUILDING

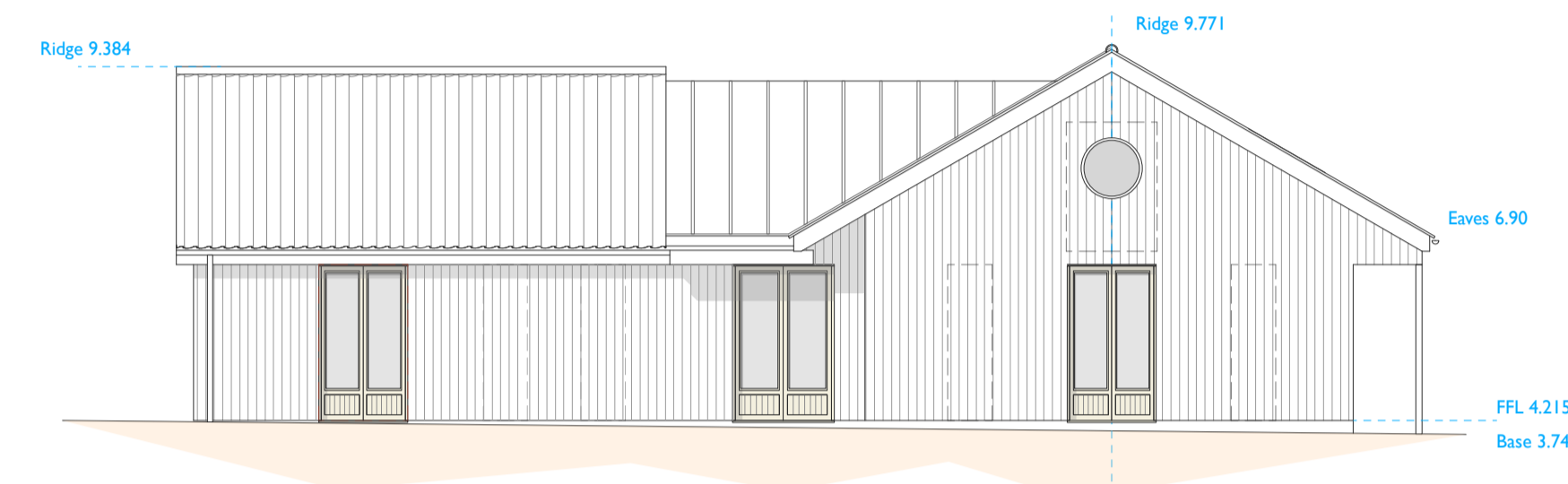
- EXTERNALS:**
- OUT DOOR PLAY AREA FOR PRE SCHOOL WITH 1800mm HIGH TIMBER T&G FENCE. REFER TO PICTURE
 - RENDERED CONCRETE ACCESS RAMP WITH PAINTED METAL GUARD RAIL



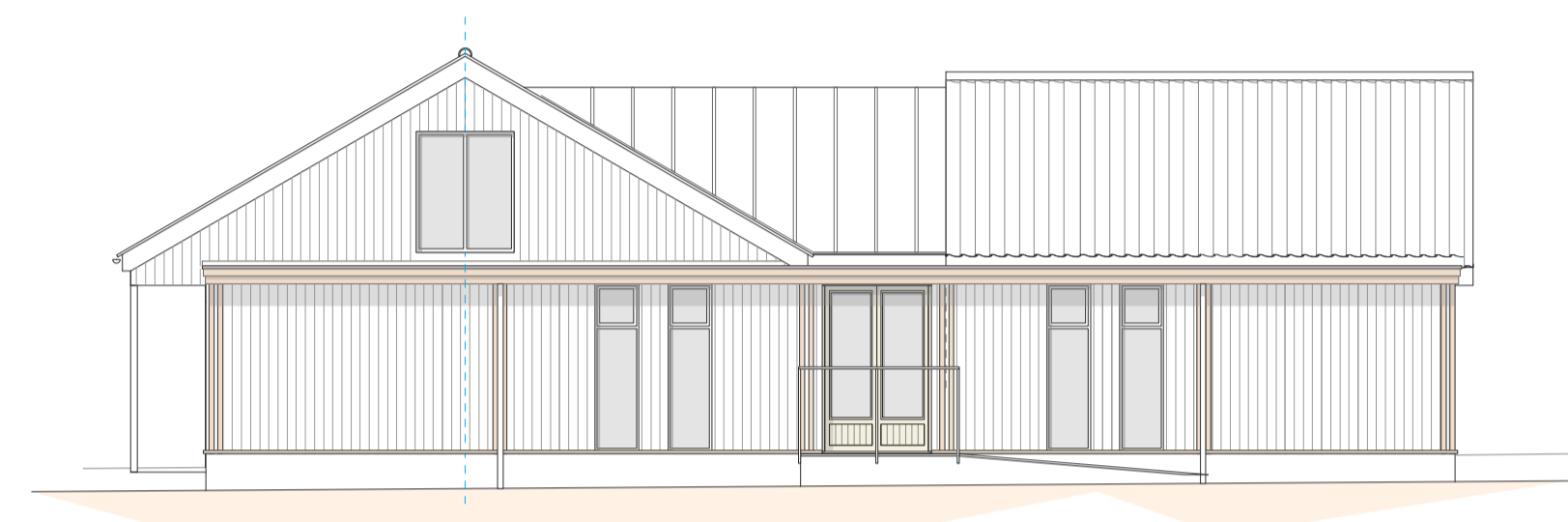
WEST ELEVATION



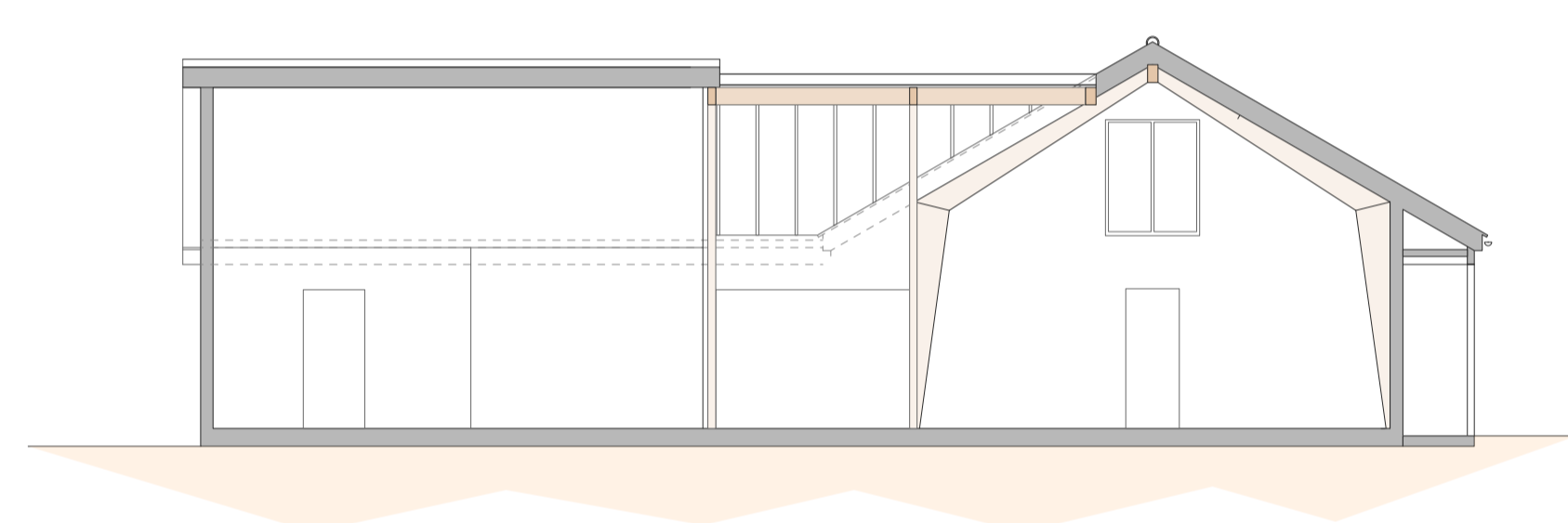
EAST ELEVATION



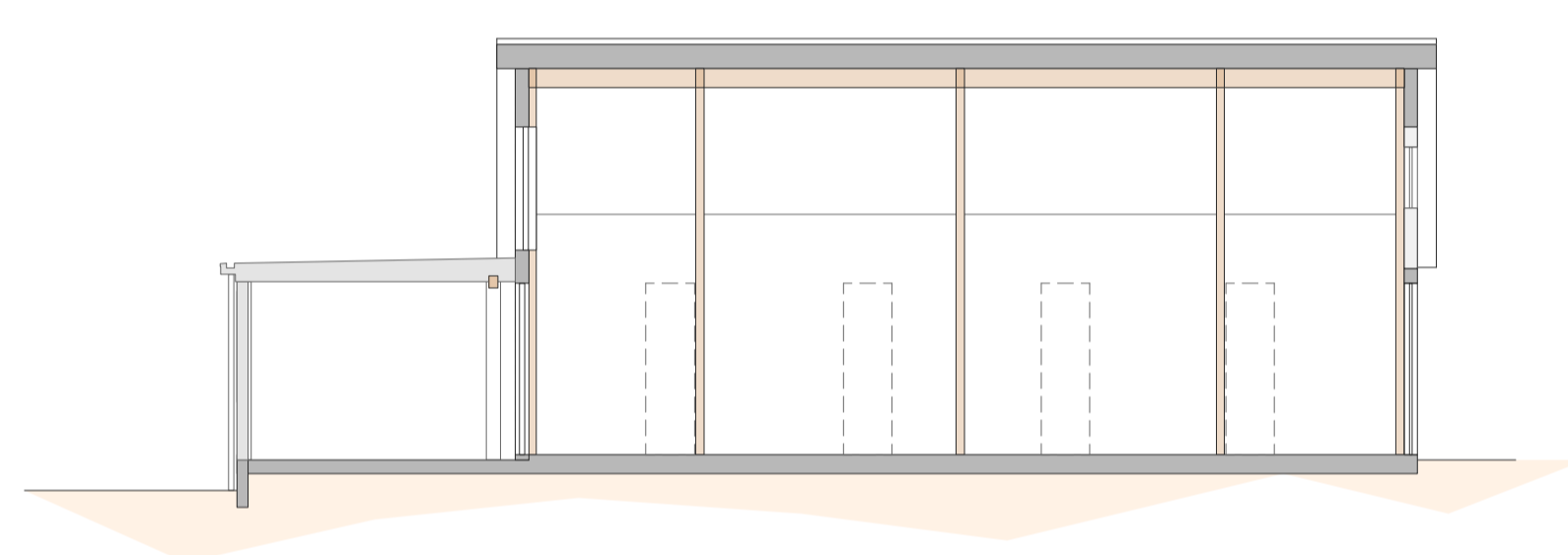
SOUTH ELEVATION



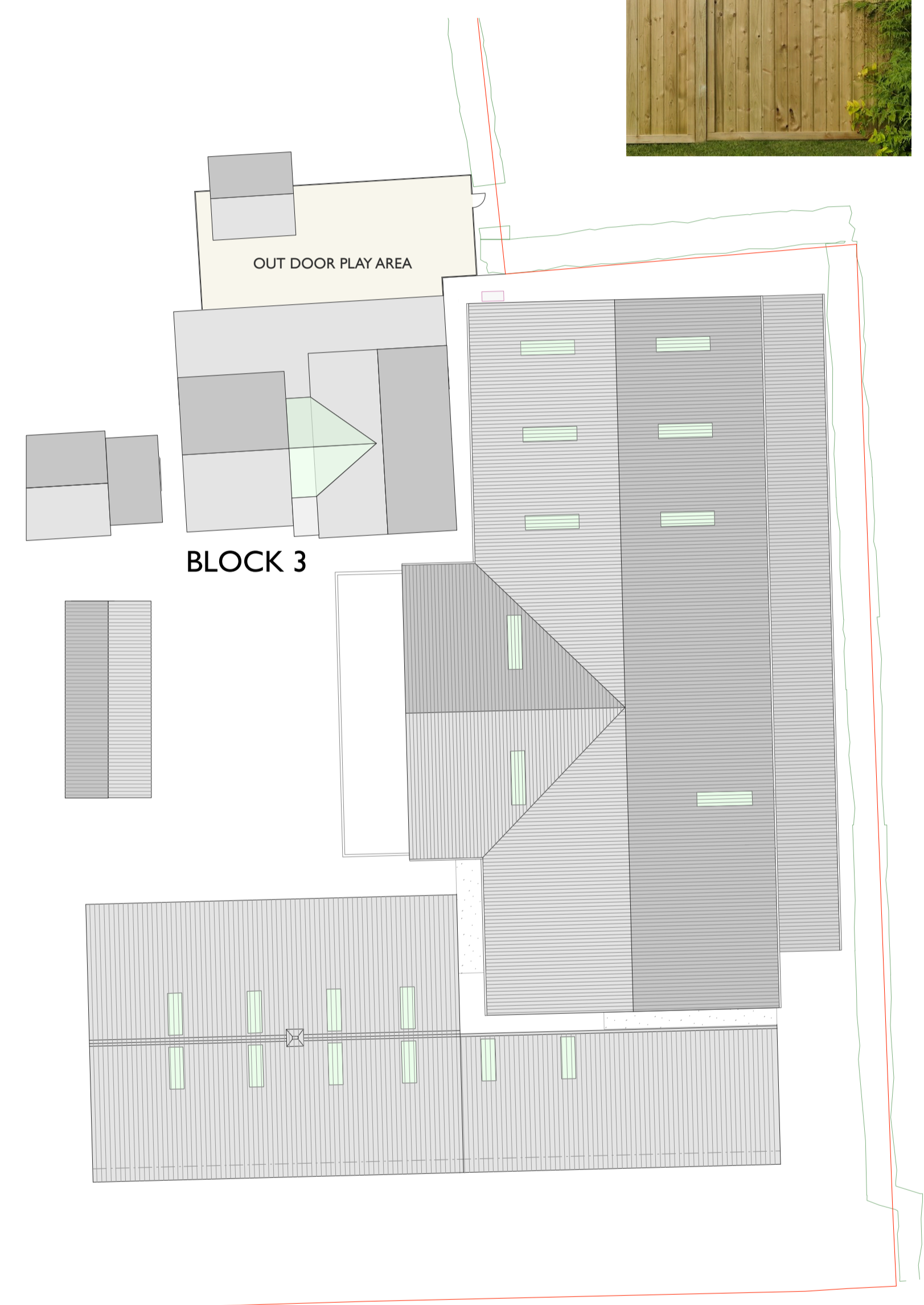
NORTH ELEVATION



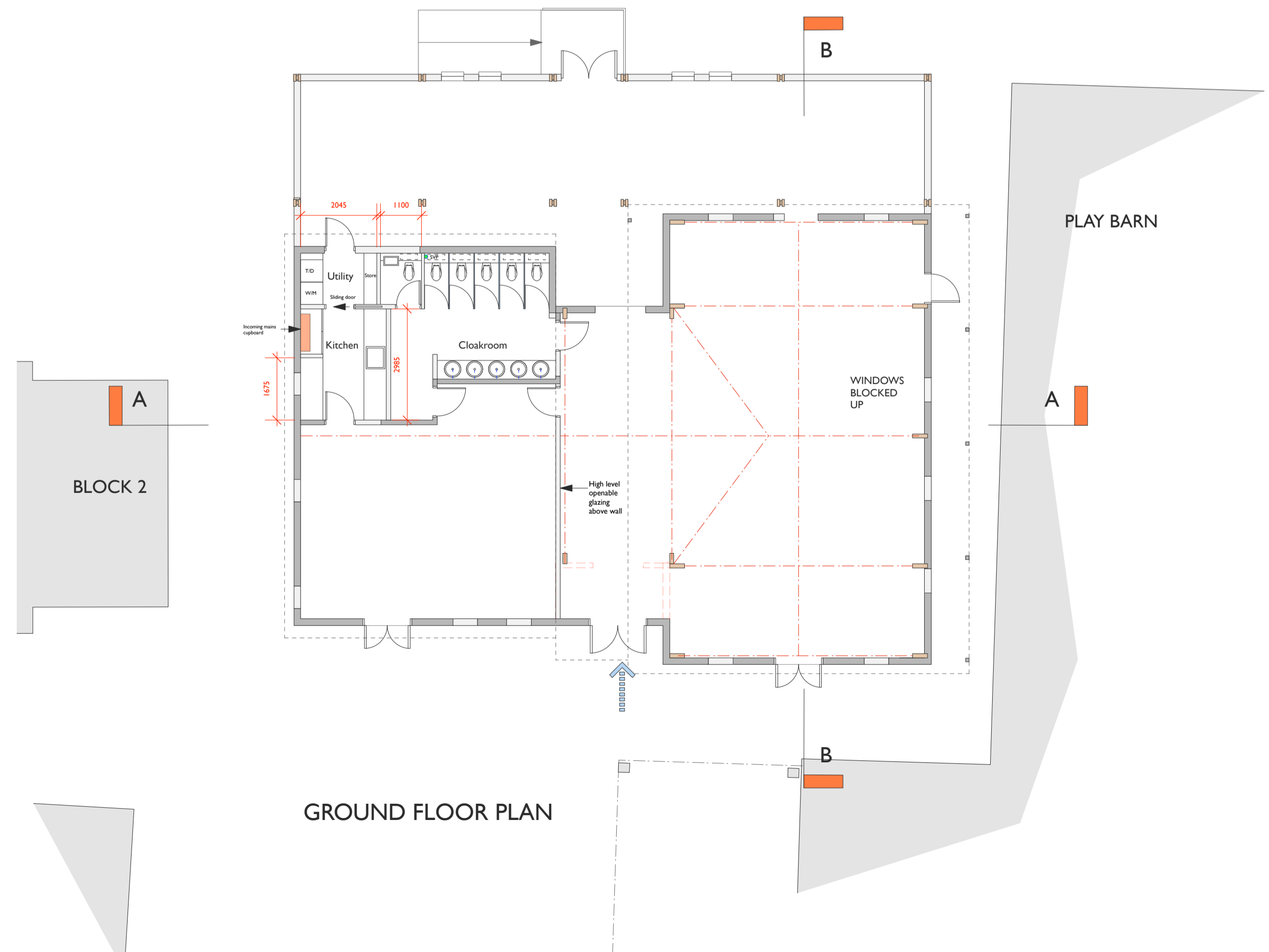
SECTION A-A



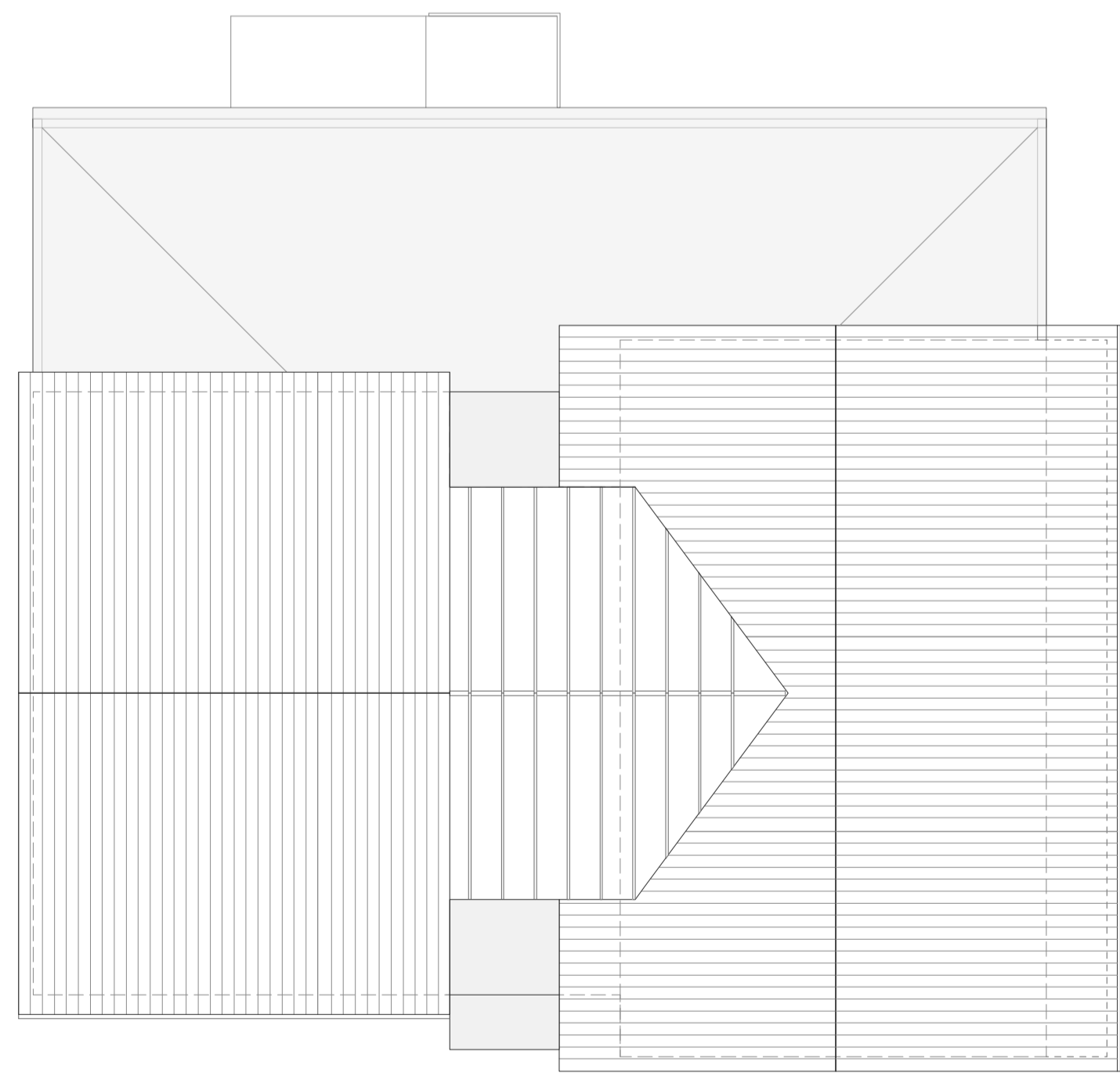
SECTION B-B



SITE PLAN 1:300



GROUND FLOOR PLAN



ROOF PLAN

A	1/2/2018	PL	REISSUED PLANNING
			Internal layout and outdoor play area added
			FOR PLANNING
REV	DATE	BY	DESCRIPTION
			Do not scale
			Notes of design are intended to assist
			Decision is the architect's final decision.

Paul Langlois Architects
 14 Victoria Street, St. Helier, Jersey, JE1 1AG
 T: +354 9933 1716 W: paul.langlois.com J: paul.langlois@paul.langlois.com

FB Ltd
 145 The
Oatlands, Guernsey

Block 3: Proposed

1:1008300 August 2018
 @ A1

FOR PLANNING
 Drawing No. 1540/26 A