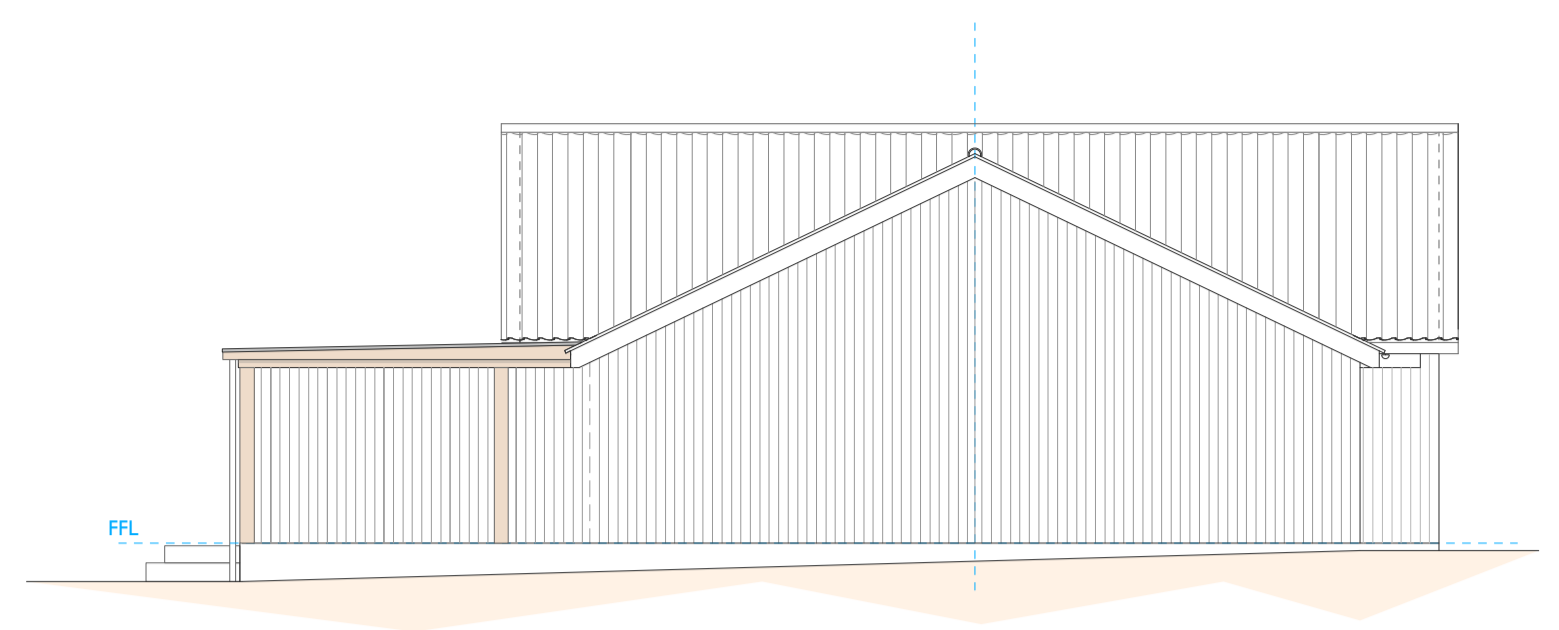
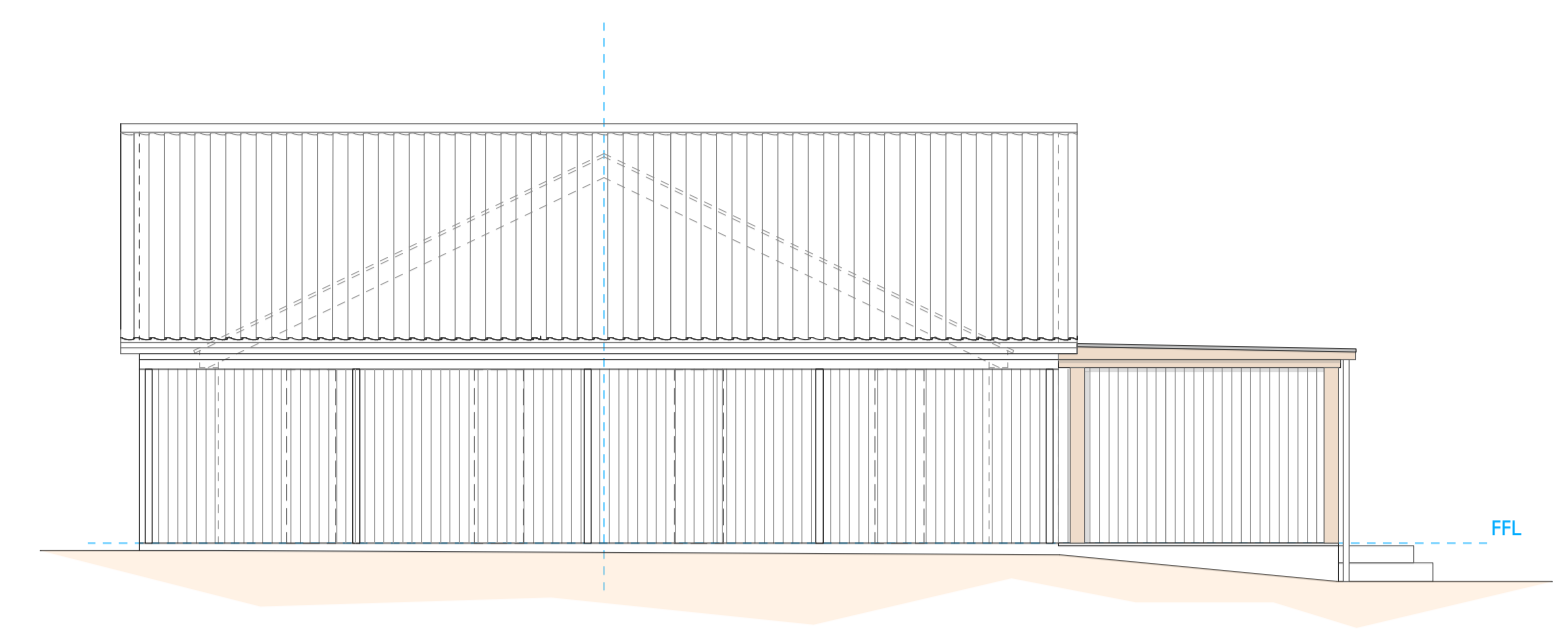


- SITE BOUNDARY
- ORIGINAL BUILDING
- NEW BUILDING

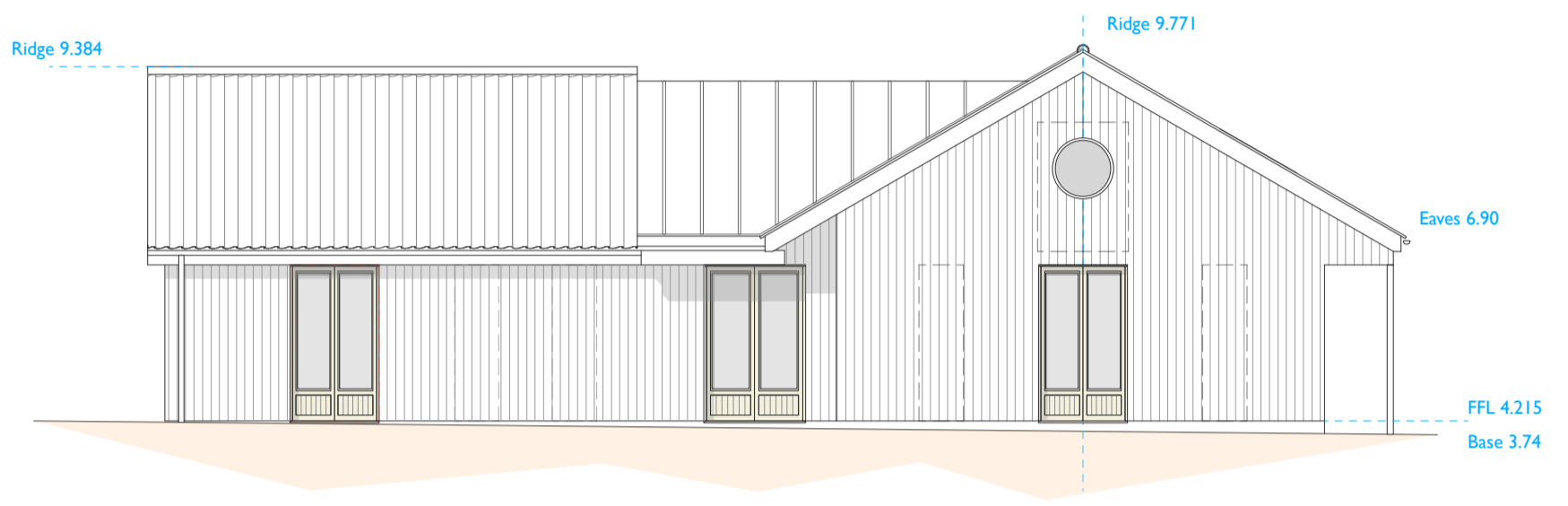
- EXISTING FINISHES:**
- PANTILE ROOF
 - GLAZED ROOF CENTRAL SECTION
 - SINGLE PLY MEMBRANE FLAT ROOF
 - TIMBER CLAD WALLS
 - TIMBER WINDOWS
 - TIMBER DOORS
 - BOUNDARY, SHRUBS, TREES AND EARTH BANKS



WEST ELEVATION



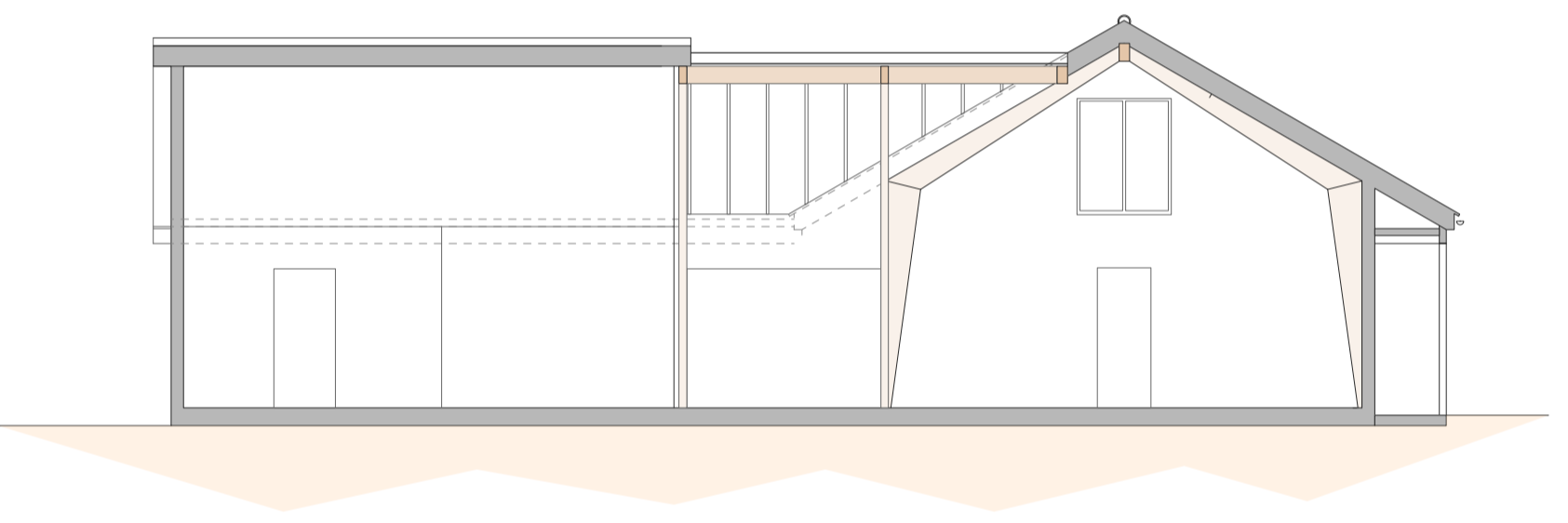
EAST ELEVATION



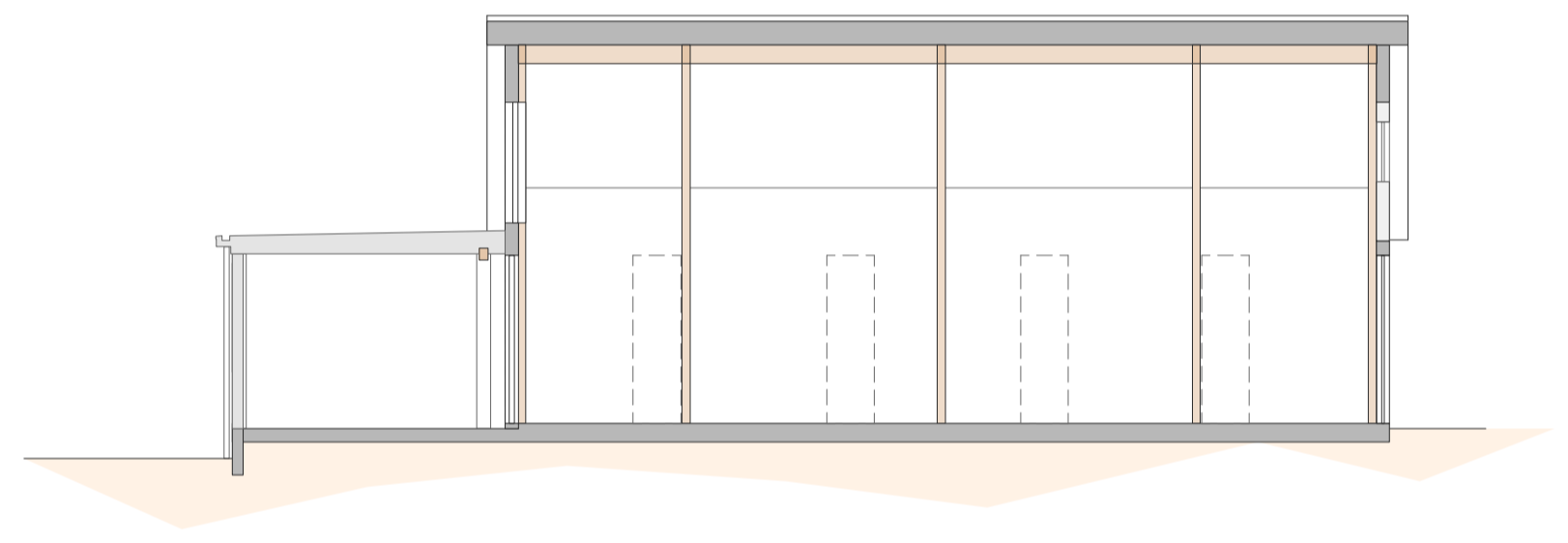
SOUTH ELEVATION



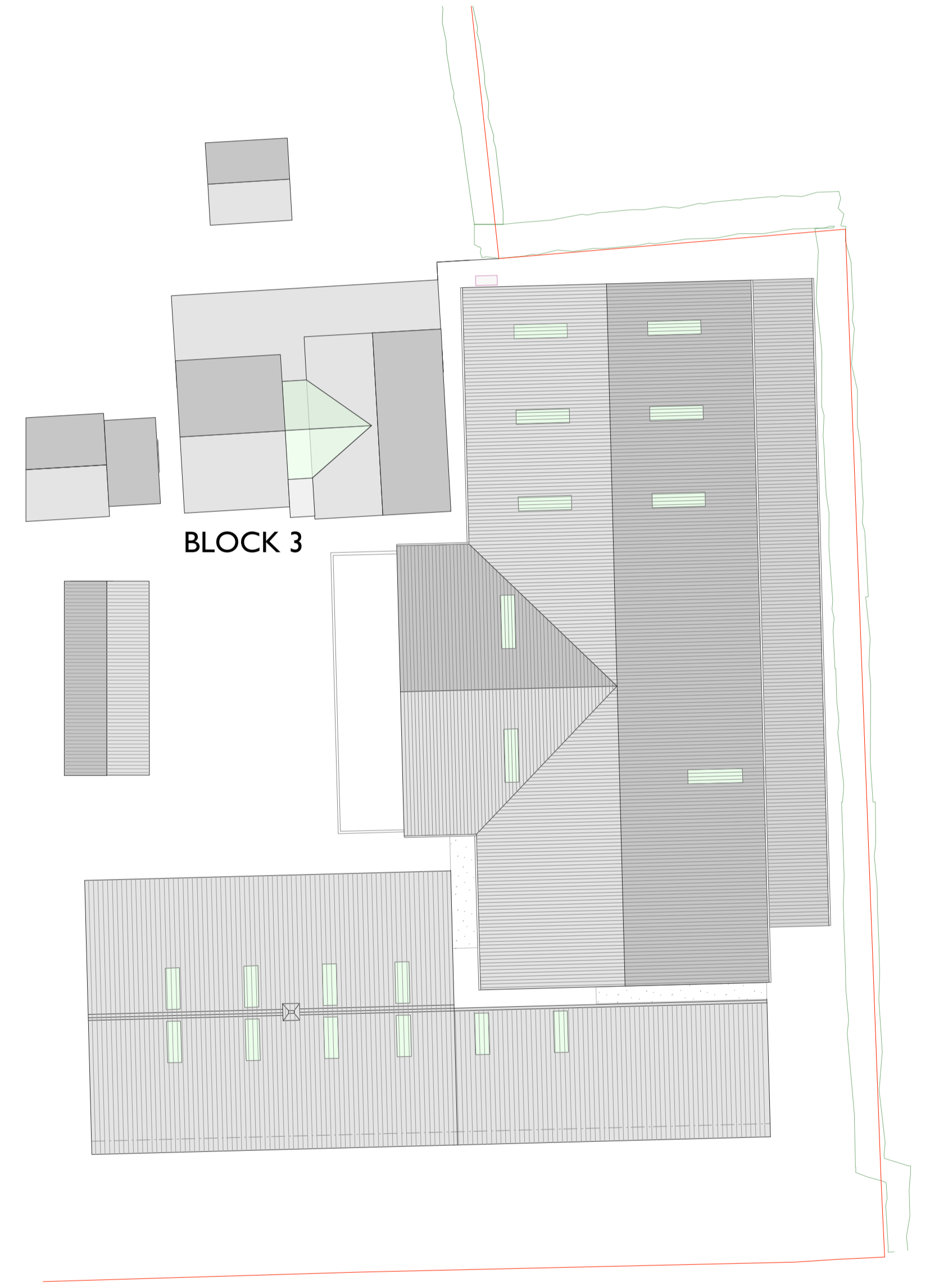
NORTH ELEVATION



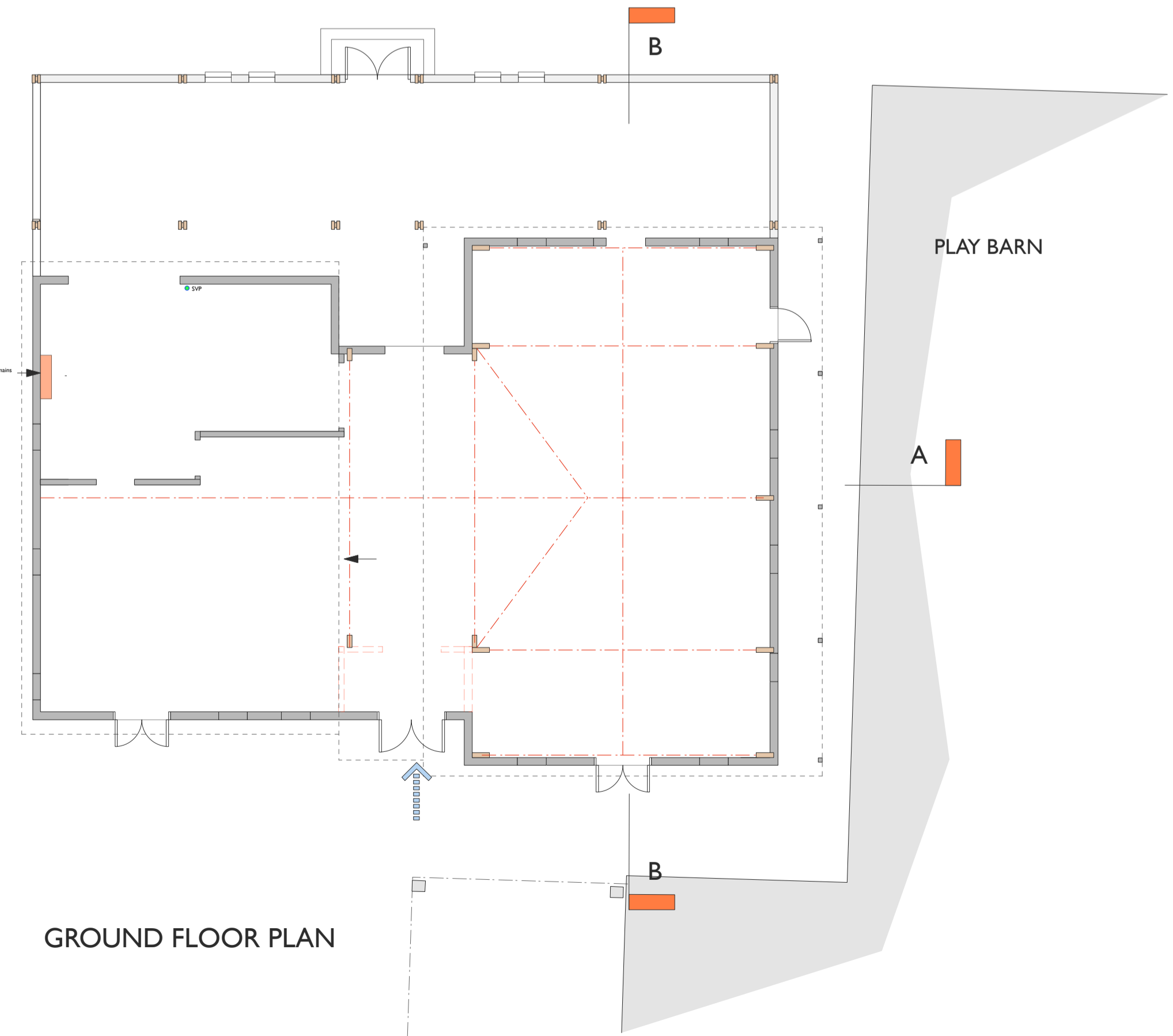
SECTION A-A



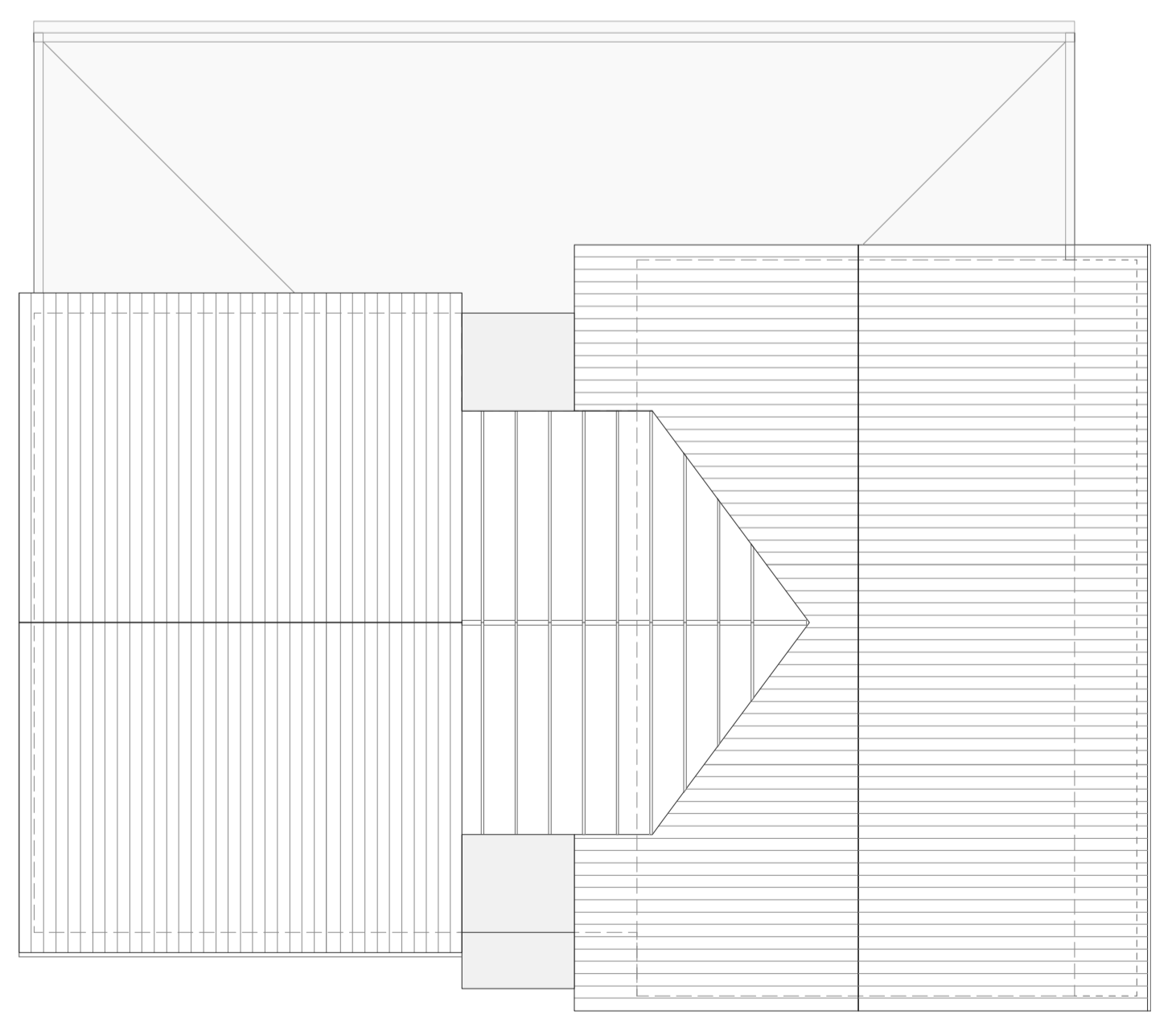
SECTION B-B



SITE PLAN 1:300



GROUND FLOOR PLAN



ROOF PLAN

12/10/20 FOR PLANNING

Do not scale. Reproduce as shown. Dimensions to be checked before fabrication.

Paul Langlois Architects
11 Victoria Street, St. Peter, St. Helier, Jersey, JE1 1AG
Tel: +354 995 17716 W: paul.langlois@paul.langlois.com

FB Ltd
11 Victoria Street, St. Peter, St. Helier, Jersey, JE1 1AG

Oatlands, Guernsey

Block 3: Existing

1:1008300 Oct. 2020 @ A1

FOR PLANNING

1540/31