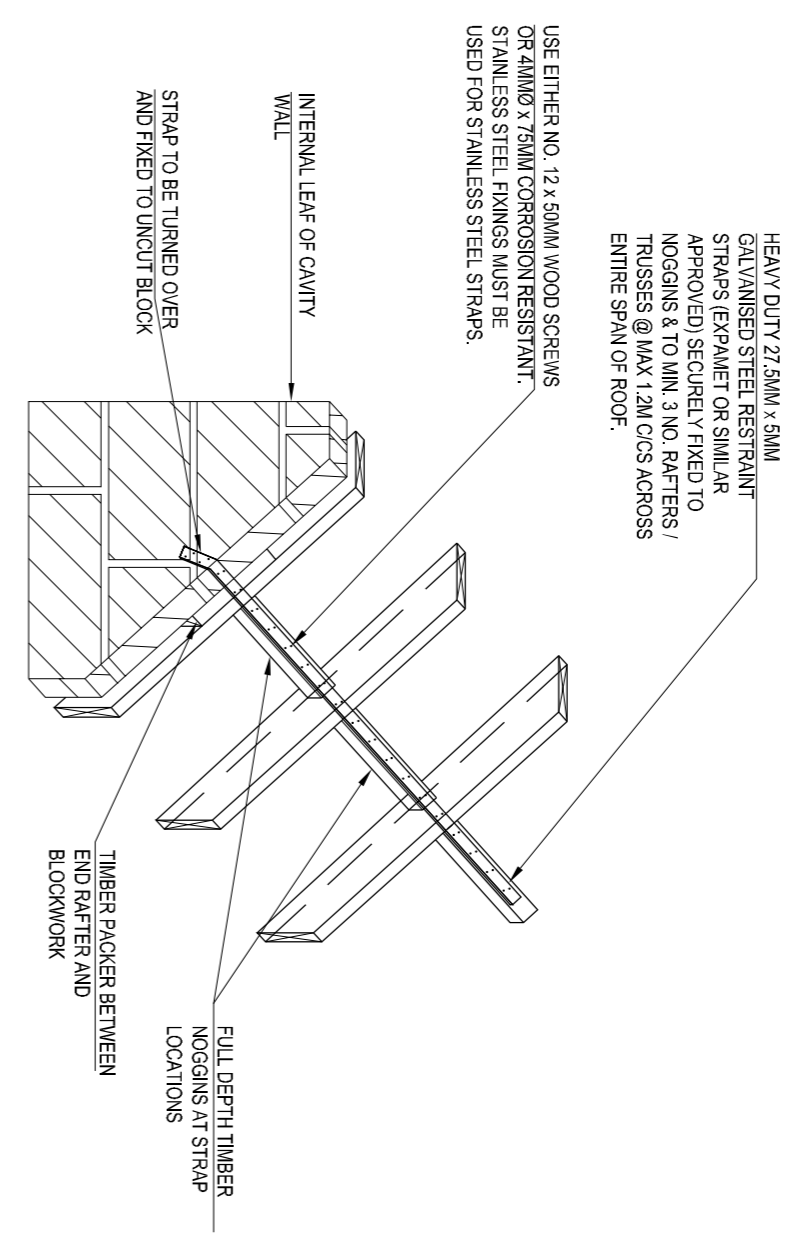


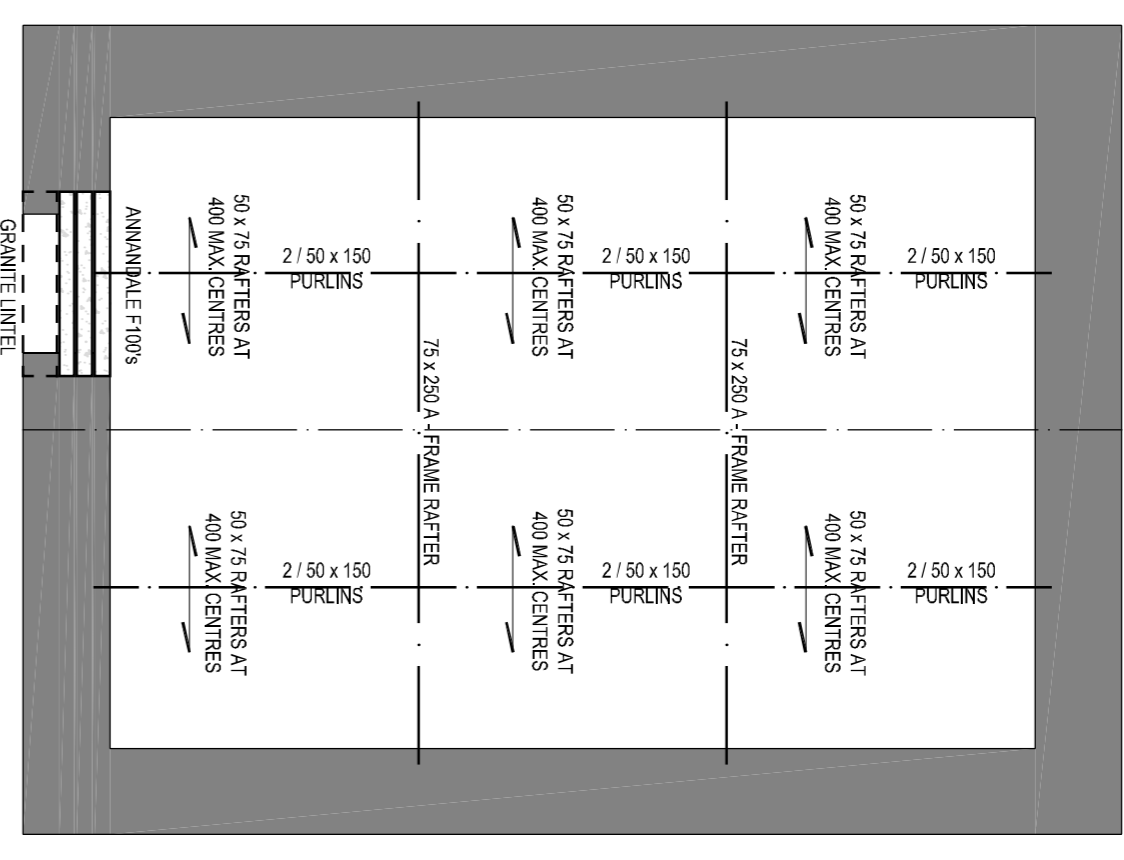
**WALL PLATE STRAPPING DOWN DETAIL**

- NOTES:**
1. DIMENSIONS ARE IN MILLIMETRES.
  2. DO NOT SCALE FROM THIS DRAWING, FIGURED DIMENSIONS TO BE USED ONLY.
  3. SITE CHECKED DIMENSIONS ARE TO BE USED FOR ORDERING AND FABRICATION.
  4. THIS DRAWING IS INTENDED FOR USE BY APPROPRIATELY QUALIFIED PERSONNEL, AND MUST BE READ IN CONJUNCTION WITH THE ARCHITECT'S DRAWINGS.
  5. THERE TO BE ANCHORS TO BE STRUCTURAL BOLTS GRADE 4.6 BOLT TO 20mm DIA.
  6. STEEL WASHERS 36mm DIAMETER AND 3mm THICK ARE TO BE USED WHERE HEAD OR NUT WOULD BEAR ON TIMBER.
  7. GLUE IS TO BE TYPE MR IN ACCORDANCE WITH BS 1204.
  8. FIRE PROTECTION TO ARCHITECT'S DETAILS.

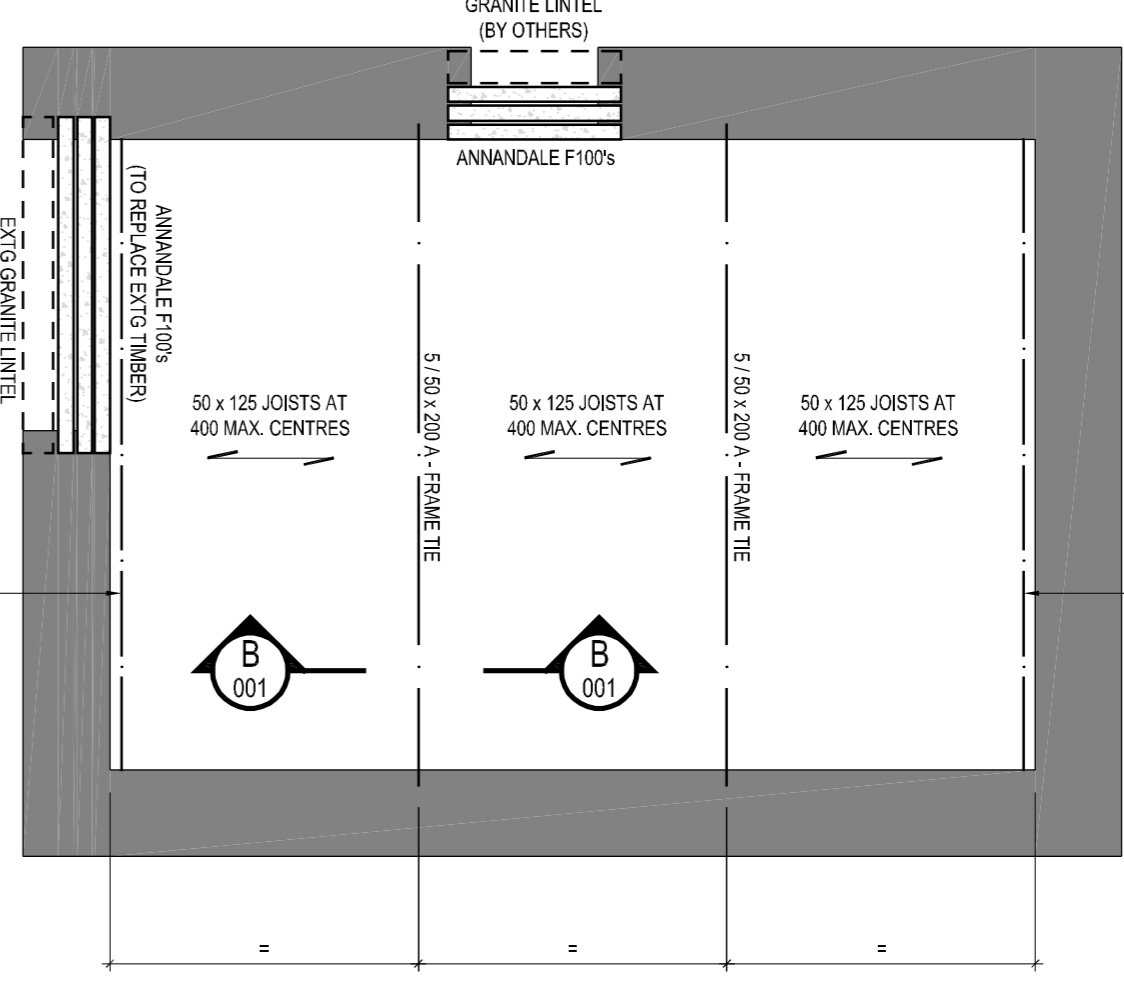
**IF IN DOUBT - ASK**



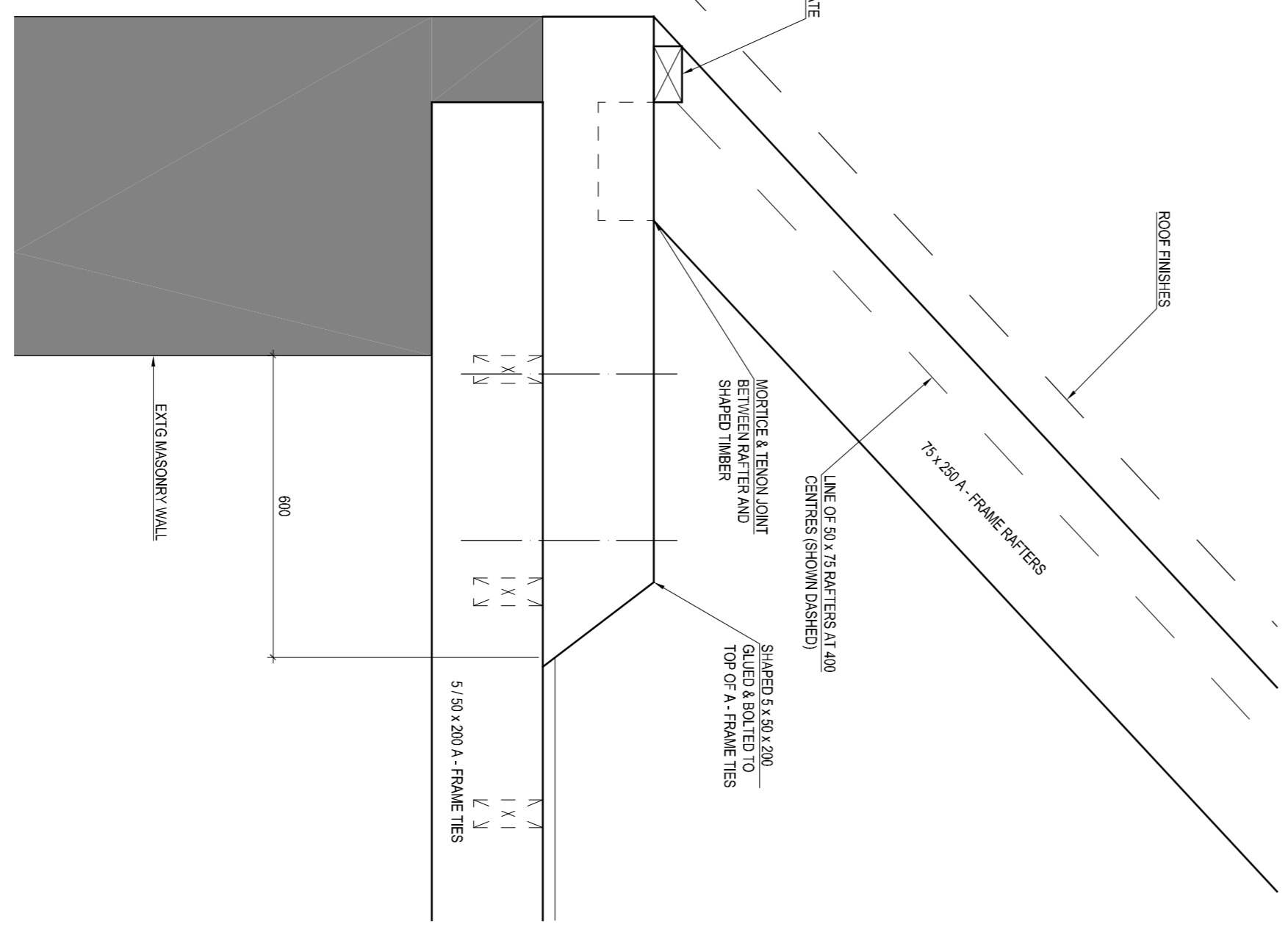
**TYPICAL RAFTER RESTRAINT DETAIL**



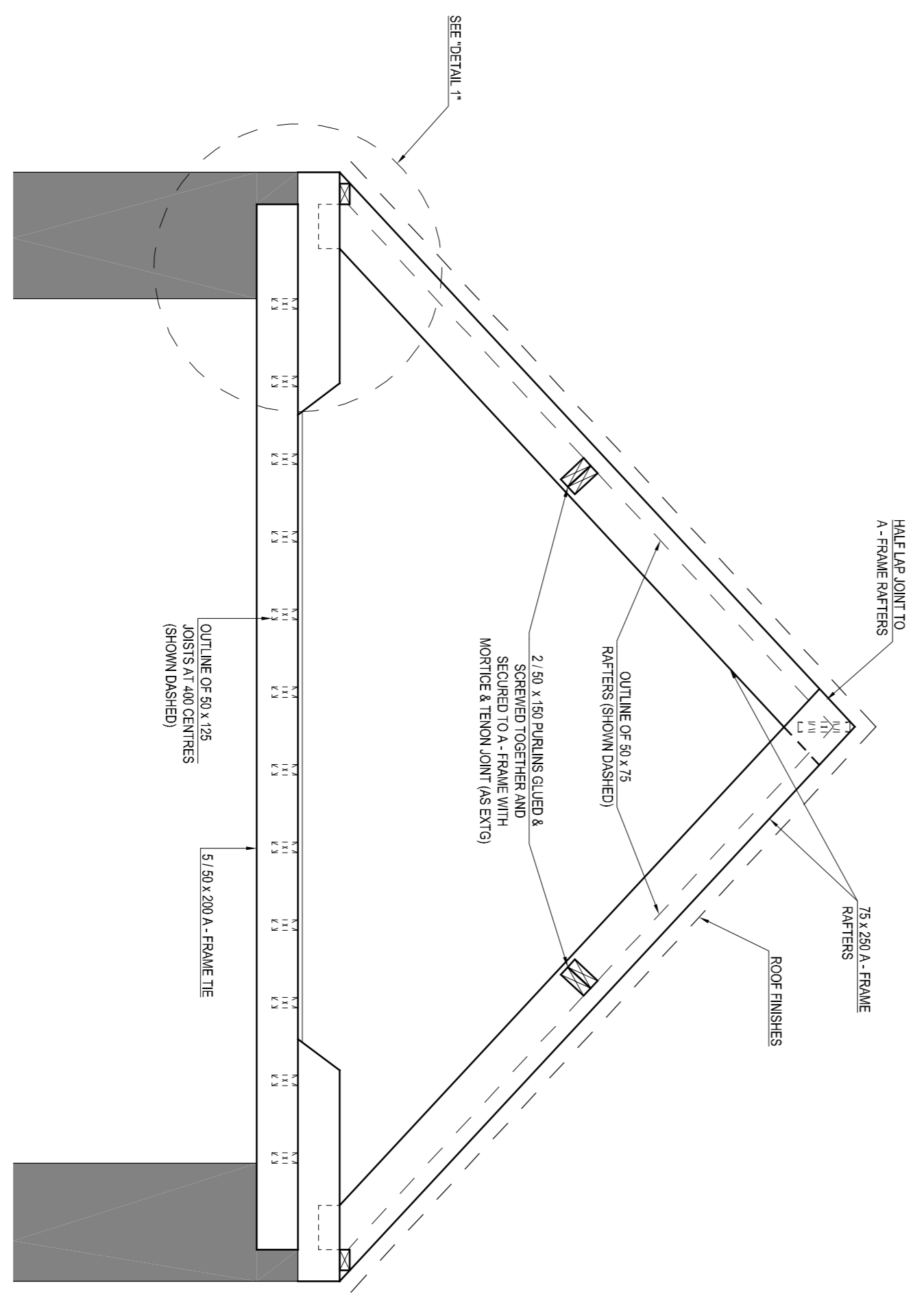
**FIRST FLOOR PLAN (SHOWING STRUCTURE OVER)**



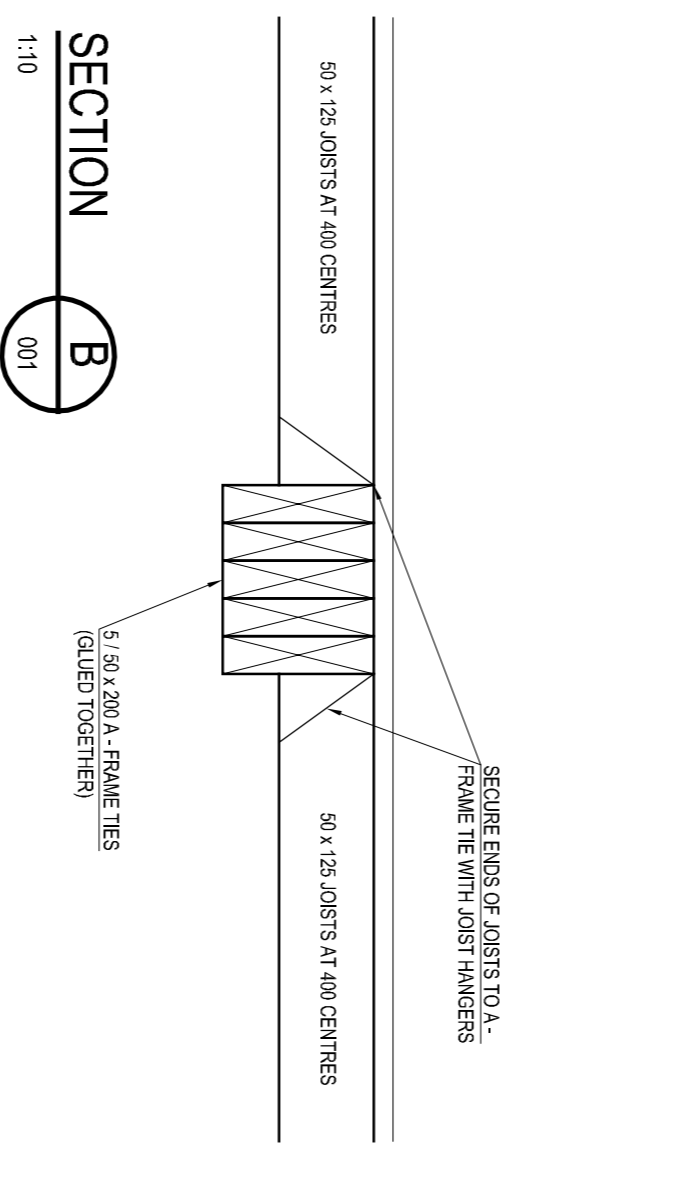
**GROUND FLOOR PLAN (SHOWING STRUCTURE OVER)**



**DETAIL 1**



**SECTION A-A**



**SECTION B-B**

Rev.	Date	Description	Drawn	Check
C1	28/05/20	CONSTRUCTION ISSUE	TN	CSB/GSB

<b>Job Title:</b> GRAND SAUNTON PETITES HOUGUES VALE	
<b>Drawing Title:</b> BARN ALTERATIONS - STRUCTURAL DETAILS	
<b>Scale @ A1:</b> 1:50, 1:25, 1:10	<b>Date:</b> MAY 2020
<b>Eng/Drawn:</b> G.S.B./T.N.	<b>Reference:</b> G.S.B.
<b>Drawing Status:</b> CONSTRUCTION	

**BML | Bobbé McCathie**  
 STRUCTURAL ENGINEERS  
 1st Floor, Cadon Court, Pitonnette Road,  
 St. Peter Port, Guernsey, GY1 2RW  
 W: www.bmlgy.com E: admin@bmlgy.com T: 01481 714344  
 Project No. **GY20102 / 001** Drawing No. **C1** Rev.