



# States of Guernsey Probation Service

## PROBATION SERVICE ANNUAL REPORT

2021

### Vision

We will contribute to making the Bailiwick of Guernsey a safe and secure place to live by the effective rehabilitation of those who offend, by tackling the causes of offending and enabling those who offend to turn their lives around.

## Contents

1. Chief Probation Officer's Foreword .....	3
2. Departmental Structure .....	5
3. Staff Structure .....	6
4. Strategic Objectives .....	7
5. Departmental Updates .....	11
5.1 Community Probation Team .....	11
<i>Caseload</i> .....	11
<i>Courts and Parole Assessment Reports</i> .....	12
<i>Interventions to reduce risk of re-offending</i> .....	13
<i>Sex offender treatment</i> .....	13
<i>Intimate Partner Abuse Perpetrator Programme (Sarnia)</i> .....	15
<i>Criminal Justice Substance Service</i> .....	16
<i>Victim Liaison Scheme</i> .....	16
5.2 Community Service Team .....	17
5.3 Prison Offender Management Unit (OMU) .....	19
<i>Accommodation &amp; Support</i> .....	19
<i>Employment, Education &amp; Training</i> .....	19
<i>Drugs &amp; Alcohol</i> .....	20
<i>Health</i> .....	20
<i>Financial Management</i> .....	20
5.4 Multi Agency Public Protection Arrangements (MAPPA) .....	21
APPENDIX 1: Annual Statistics .....	22

## 1. Chief Probation Officer's Foreword

The Probation Team in Guernsey is one of the most cohesive I have come across. As in many teams, there is a mixture of experience and the culture of the service provides support for those with less experience which comes from the Senior Management Team, and the more experienced practitioners. There is a strong emphasis on rehabilitation and resettlement with an end-to-end supervision model that works well in an Island environment. The Probation Service is comprised of the Community Probation Team, the Community Service Team, the Offender Management Unit (OMU) and the Multi Agency Public Protection Unit (MAPP). This Annual Report provides an update on each element of the Service, as well as the progress made towards meeting the operational objectives set out in the 2021 Business Plan.

The Community Probation Team has continued to work towards the strategic objectives of the Probation Service and has also successfully delivered an increase in demand for service seen through the growth in the issuance of Community Service Orders and Probation Orders. The Community Probation Team are also responsible for the delivery of the Sarnia Programme, an integral component of the Island's domestic abuse strategy, which provides an opportunity for the rehabilitation of offenders of domestic abuse. 2021 saw the highest number of service users complete the programme since it was launched.

The Community Service Team have also worked tirelessly throughout 2021 and have achieved all of their strategic objectives. The infrastructure for the delivery of the Community Service function is less than ideal, a dedicated area to receive individuals reporting for service and an indoor workshop facility would be of benefit. Nonetheless, a total of 10,190 hours of community work was undertaken by offenders by way of restitution to the community. 2021 witnessed a substantial increase in the number of community service orders imposed and a corresponding, and record breaking, rise in the number of community service hours completed.

An area of challenge during 2021 was the lack of availability of suitable accommodation within the community for individuals leaving custody. This has had a huge impact on those hard to accommodate offenders posing a particular difficulty to the Offender Management Unit (OMU) within the prison. The unit is often releasing offenders from custody without the benefit of supported accommodation which has a detrimental impact on rehabilitation and resettlement and ultimately can mean the commission of further offences. A hostel and move on facilities are required to address what has been a long-standing issue. The OMU has been engaged in workshops with the Guernsey Community Foundation examining access to affordable housing and the Service looks forward to the findings and recommendations of this review in 2022.

While accommodation for individuals leaving custody has been a challenge, it has been encouraging to see that the OMU has reported an increase in employment opportunities. The OMU has also facilitated the introduction of a trauma informed approach within the prison healthcare environment and there have been other improvements in the financial management skills education delivered to offenders and the financial facilities available to them upon leaving Prison.

The MAPP Unit continues to provide a vital element of the overall service that Probation delivers to the Island, managing those individuals who pose the most substantial risk. The Unit has reported a small increase in individuals under its management, from a figure of 109 in 2020, to 116 in 2021, which follows the trend seen in previous years.

The Probation Service could not have achieved all it has in 2021 without the help of others and I would like to take this opportunity to thank all those within our statutory partner agencies and third-sector services who have worked closely with the Probation Team to support and manage our service users. Such collaborative working allows us to provide access to a wider range of services to support individuals to address their criminogenic need and to help them desist from further offending.

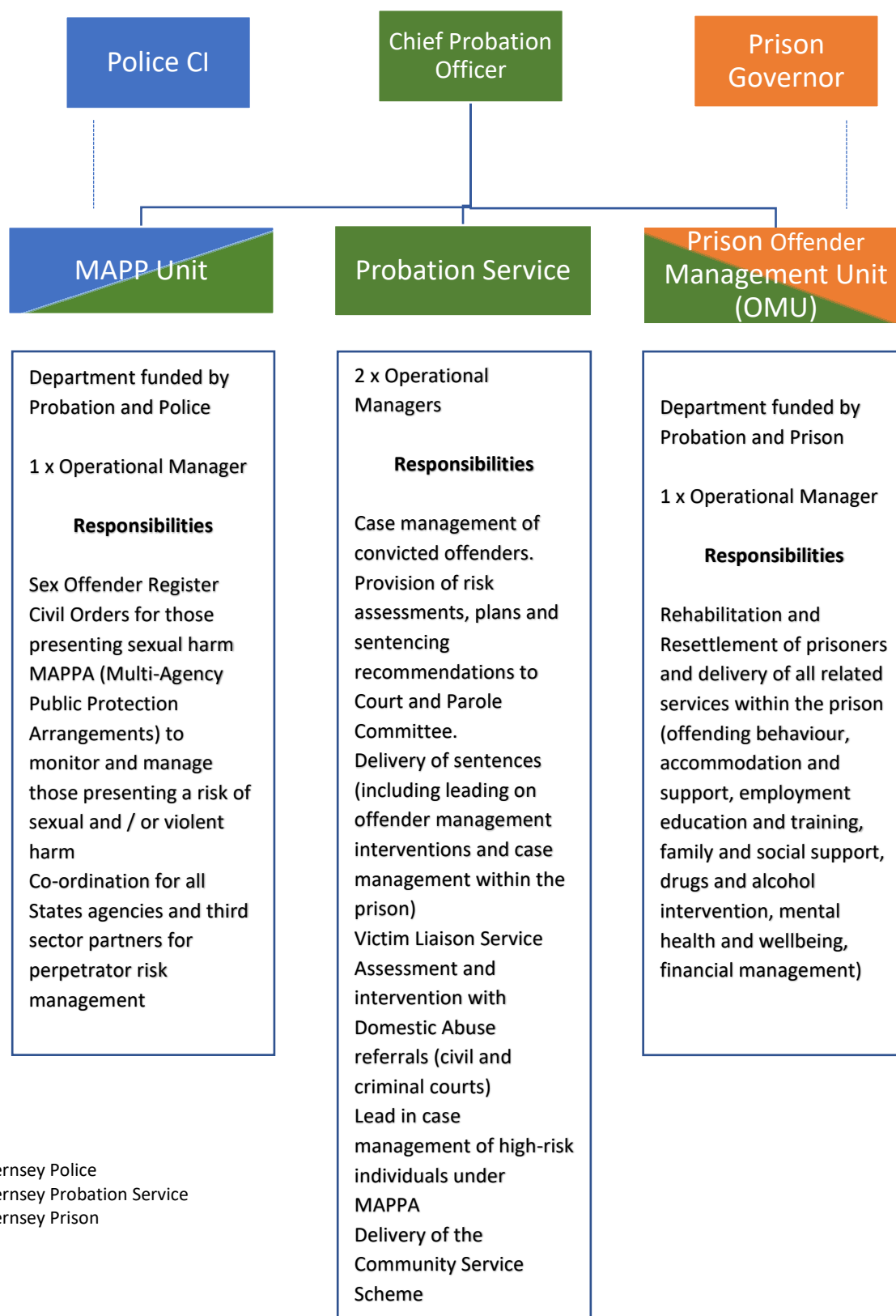
On a personal note, I only took up the post of Chief Probation Officer towards the end of 2021, in September. I am truly thankful for the preparations made by the Probation Team to welcome me into the role and to familiarise me with each of the elements of the Service. I must offer my sincere thanks to the Senior Management Team who have professionally and capably managed the strategic aspects of the service, alongside their day to day duties, for much of 2021. Indeed, credit is due to all the staff within the Probation Service for the commitment that they have demonstrated in ensuring a superb standard of service delivery in what has been a challenging, and busy year, amid the continuation of restrictions due to COVID-19.

In closing, I would like to take this opportunity to thank the Committee *for* Home Affairs for their support to my Senior Management Team and their support and welcome to me during what has been another exceptional year.

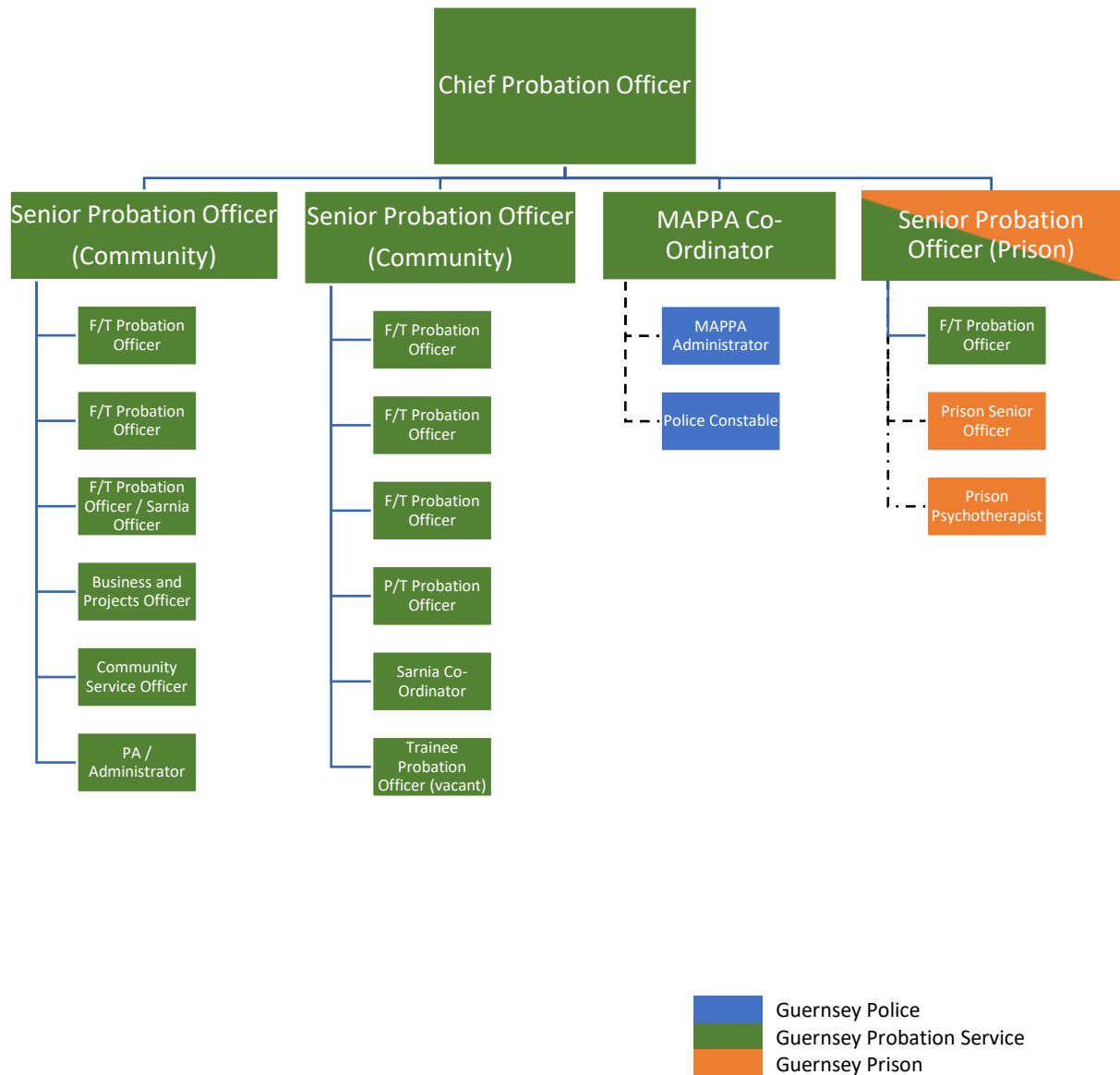
Geraldine Martin  
Chief Probation Officer

## 2. Departmental Structure

Below is the departmental structure of the Probation Service, highlighting the collaborative working arrangements in place with the Guernsey Police and Guernsey Prison, and the responsibilities of each area.



### 3. Staff Structure



## 4. Strategic Objectives

The 2021 Strategic Objectives were:

- A safe and secure place to live;
- The effective rehabilitation of those who offend;
- Tackling the causes of offending; and,
- Enabling those who offend to turn their lives around.

A summary of the Probation Service's progress towards these objectives can be found in the table below.

### A Safe and Secure Place to Live

Area of Work	Project	Progress
Community Service	Increase public awareness of the Community Service Scheme by:	
	<ul style="list-style-type: none"><li>• Publishing regular media releases in conjunction with the Communications team</li></ul>	Limitations due to COVID-19 restrictions, but plans are in place to publicise the Foodbank initiative
	<ul style="list-style-type: none"><li>• Ensuring that regularly maintained beneficiary sites have Community Service plaques on display</li></ul>	Plaques are now being displayed
	<ul style="list-style-type: none"><li>• Visiting Alderney on an annual basis to maintain relationships with beneficiaries and promote the Community Service Scheme</li></ul>	2021 visit took place.
	<ul style="list-style-type: none"><li>• Identify and secure indoor work opportunities (primarily for the winter months)</li></ul>	Edible Guernsey Indoor greenhouse project in place
MAPPA	Re-establishment of the MAPPA Strategic Management Board formal meetings to ensure the processes for management of those presenting the highest risk to our community are co-ordinated from a multi-agency strategic as well as operational perspective	Carried forward to 2022
MAPPA	Review the MAPPA process and procedures and update the guidance document accordingly	Carried forward to 2022

Area of Work	Project	Progress
MAPPA	Develop and implement a Quality Assurance Framework for MAPPA	Carried forward to 2022
Victim Liaison	Improved working with the Victim Support and Witness Care Unit to ensure the needs of victims of sentenced offenders remain a priority	Carried forward to 2022 due to management restructure at Victim Support
Probation Officer training	Conduct a review of Probation Officer training in order to map gaps and identify how training can be developed to ensure skilled practitioners can be trained on island.	Carried forward to 2022
Justice	Proactively participate in implementing the principles and recommendations of the Justice Review as directed by the Assembly, and work with our strategic partners to achieve good outcomes under the auspices of Justice	The Probation Service remains committed to involvement in future initiatives developed consequent to this review.

#### Effective Rehabilitation of Those who Offend

Area of Work	Project	Timeline
Domestic Abuse Perpetrator Programme (Sarnia)	Further review and development of the Sarnia Programme – future steps will be dependent on the decisions and resource recommendations at the strategic and political level at the end of Q2	Progress of development and resourcing of this important and ever-increasing work stream has been delayed due to COVID-19 but remains part of the wider Domestic Abuse strategy development. Continued to 2022
Sex Offender Treatment Programme	Development of interventions to reduce the likelihood of sexual recidivism through updates to the Sex Offender Treatment Programme	This work continues and as new interventions are developed they are integrated into our work with offenders



## Effective Rehabilitation of Those who Offend

Area of Work	Project	Timeline
Domestic Abuse Perpetrator Programme (Sarnia)	Further review and development of the Sarnia Programme – future steps will be dependent on the decisions and resource recommendations at the strategic and political level at the end of Q2	Progress of development and resourcing of this important and ever-increasing work stream has been delayed due to COVID-19 but remains part of the wider DA strategy development. Continued to 2022
Sex Offender Treatment Programme	Development of interventions to reduce the likelihood of sexual recidivism through updates to the Sex Offender Treatment Programme	This work continues and as new interventions are developed they are integrated into our work with offenders

## Tackling the causes of offending

Area of Work	Project	Timeline
Safeguarding	Provide input to strategic and operational development forums relating to the safeguarding of children and adults, including Island Safeguarding Children Partnership (ISCP) and Island Safeguarding Adults Partnership (ISAP)	Much progress has been made, particularly in relation to ISCP, with plans to further progress ISAP in place
Social responsibility	Engage with our partners in other States Committees in the development of their initiatives where we may add value or represent the link with Justice, such as the combined substance misuse strategy delivered by the Committee for Health and Social Care	As dictated by the timeframes of other Committees

## Enabling those who offend to turn their lives around

Area of Work	Project	Timeline
Prison Offender Management	Create and implement a full cross agency action plan for the Rehabilitation and Resettlement Strategy as the operating model for joint Probation/Prison working, encouraging the engagement of services from across the wider States and third sector, as well as the Committee for Home Affairs	This work continues with the End- to-End Supervision model, with one officer from pre-sentence to end of licence. Additional approaches are also being developed
Resettlement	Development of the Prison Resettlement Officer role with the aim of easing prisoner transition between prison and community. Working to achieve a positive social environment on release to support attitudinal, cognitive and behavioural interventions, and increase the likelihood of prisoners achieving and maintaining a pro-social lifestyle on release.	This role is established and Prison and Probation work together to provide a seamless transition from prison to the community

## 5. Departmental Updates

### 5.1 Community Probation Team

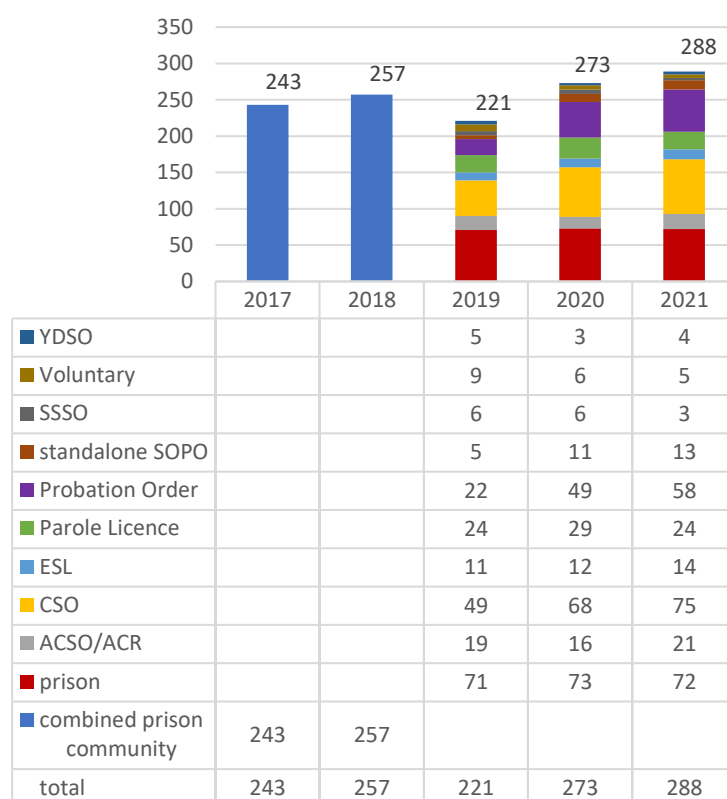
The majority of the Probation team are based in the community, where they prepare Court reports to aid in sentencing, and Parole reports to assist the Parole Review Committee in decisions regarding early release from prison. The team monitor and manage service users subject to Community Orders and post custodial licences. Interventions designed to reduce the likelihood of re-offending are undertaken with both community-based service users and with prisoners, for whom this team also has offender management responsibilities during their period of imprisonment.

The Probation Service saw 4 posts become vacant during 2021. One new Probation Officer started at the end of 2021, with another two due to start in the first half of 2022. The vacant position of Chief Probation Officer was also filled. At the end of 2021, one post remained vacant.

#### Caseload

The introduction of the Probation (Bailiwick of Guernsey) Law 2018 in Q4 of 2019 has allowed Courts to impose a Probation Order alongside another sentence (for example a Community Service Order) for one offence. These new sentencing powers allow for the offender to be both supported to avoid re-offending and provide reparation to the community. The numbers of combined Probation Orders and Community Service Orders have increased as a result. Whilst the benefit is that this combined order will have prevented prison sentences being imposed, this has increased the workload with the most resource intensive community order. The Community Team have met this challenge despite continued staff vacancies and the additional strategic responsibilities that were being managed by the Senior Management Team for much of 2021.

Average caseload (2017-2018) and year end snapshot (2019-2021)

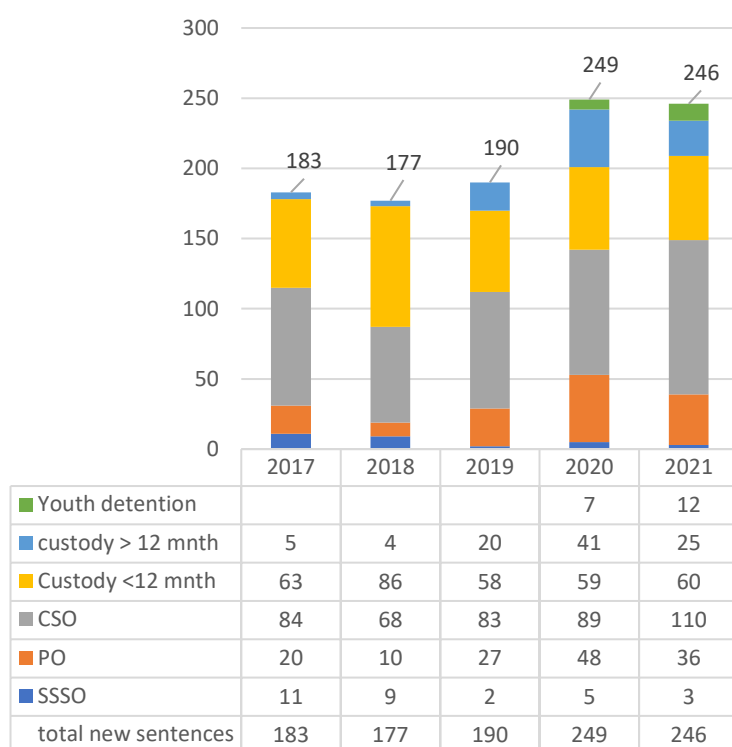


The graph above illustrates the caseload composition of 2021 compared to previous years. A full breakdown of case type is not available before 2019.

1

<sup>1</sup> YDSO Youth Detention Supervision Order; Voluntary Supervision; SSSO Suspended Sentence Supervision Order; SOPO Sexual Offences Prevention Order; ESL Extended Sentence Licence; CSO Community Service Order; and ACSO Adult Custody Supervision Order/ACR Automatic Conditional Release

Sentence Outcomes (outcomes of Court reports, whereby Probation Service have offender management responsibilities)

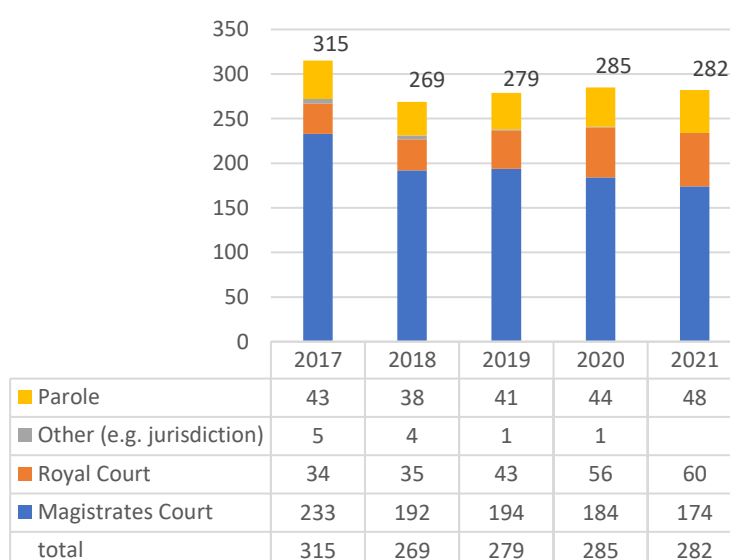


As in 2020, Courts continued to operate during the 2021 COVID-19 lockdown, albeit with delays and adjournments for some cases and as a consequence Court reports (Social Enquiry Reports) have remained steady over recent years. That being said, the spread has varied considerably over the course of the year with as few as 5 social enquiry reports being completed in March compared to a record 38 in September something likely to be lockdown related.

The graph above<sup>2</sup> shows the outcomes of Court reports completed, whereby the Probation Service has ongoing responsibility for offender management.

'New' cases showed a marked increase during 2020 a trend that has continued into 2021, and this is despite the number of reports remaining relatively static compared to 2019. This may well be a consequence, in part at least, of a combination of sentences being able to be imposed for one offence consequent to the Probation (Bailiwick of Guernsey) Law, 2019 mentioned earlier in this report.

Court and Parole Reports completed



<sup>2</sup> Youth detention data is incorporated within general custody data pre-2020.

SSSO - Suspended Sentence Supervision Order; CSO - Community Service Order; and PO - Probation Order

### *Interventions to reduce risk of re-offending*

All those subject to a community or prison sentence will have an assessment to identify the likelihood of re-offending, the risk of harm, and factors linked to their likelihood of re-offending. Factors are drawn down into either a supervision plan (in the community) or a sentence plan (in prison). Where time allows, intervention then occurs to address these factors in an attempt to reduce the likelihood of re-offending (short prison sentences often do not allow for sufficient time for intervention). The Probation Service follows Risk Need Responsivity (RNR) principles whereby resources are prioritised towards those presenting the greatest risk to our community, where interventions are targeted towards relevant need, and where intervention takes account of an individual's personal factors and presentation that may impact the effectiveness of interventions. Alongside interventions targeting risk, the Service will also use principles of the Good Life Model to encourage individuals to develop positive and productive attitudes and behaviours to promote more pro-social engagement with their communities.

In Prison, offending behaviour work may include referral and completion of programmes such as Choices and Challenges or Decider Skills, but will also include, both in the Prison and the community, completion of interventions with the Probation Worker as well as specialist services such as the Criminal Justice Substance Service. Examples of interventions include but are not limited to, challenging attitudes that are supportive of offending, emotional regulation, victim awareness, dealing with destructive levels of aggression, and consequential thinking.

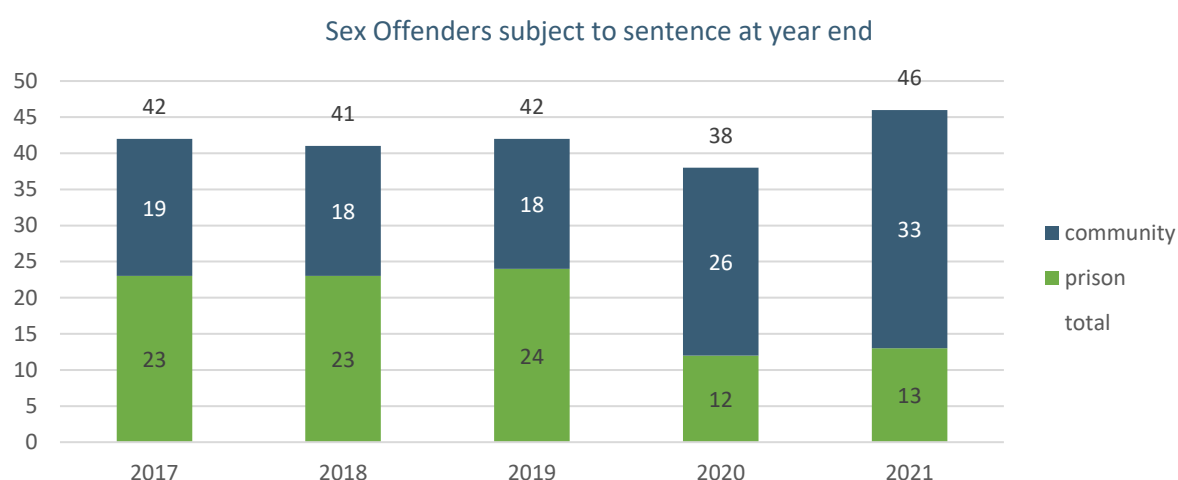
Throughout the work undertaken with service users, Probation Officers often link in with partner agencies. This allows us to share and receive information relating to the progress service users make through their Orders or Licences, facilitating the offer of support from a more practical point of view, such as supporting service users to find employment and accommodation. In particular we would like to express gratitude to the services of Guernsey Caring for Ex-Offenders in the support work they do with our service users, both while in custody and upon release. As well as employment and accommodation support, their mentoring service is particularly useful when managing a client's resettlement back into the community, especially when service users are leaving prison custody after lengthy sentences.

Accommodation has become a particular challenge over recent years, as has been noted by the local community generally. Accommodation is key to both assisting ex-offenders to lead more pro-social lives, but is additionally of paramount importance when considering the need to monitor and respond to the whereabouts of those presenting a high risk of potential harm to the community. The lack of accommodation availability therefore provides significant concern to the Probation Service.

### *Sex offender treatment*

As mentioned previously, resources are targeted towards those presenting the greatest risk of harm to our community. Sexual offences therefore represent a focus of intervention and the Probation Officers deliver targeted sexual offending intervention, work that is overseen by a clinical forensic psychologist. 2021 saw the team trained in the new National Organisation for the Treatment of

Abusers (NOTA) Individualised Treatment Programme which emphasised the structure we previously worked under but increased the levels of assessment and interventions available to officers.



The graph above illustrates that the number of sex offenders subject to management by the Probation Service has remained static over the last 5 years. There has however been a notable shift in the location of this client group since 2020, with fewer individuals being managed in prison as opposed to within the community. This may be reflective of an increase in early release on Parole Licence and prisoners sentenced to lengthy sentences a few years ago reaching the end of the imprisonment part of their sentence.

The table below provides the 'active treatment' summary in relation to sex offenders.

	Total Probation caseload of sex offenders	Total involved in treatment at some point during the year	Closed to treatment during year	Number remaining in treatment at year end
2018	41	33	7	26
2019	42	37	4	33
2020	38	38	11	27
2021	46	38	5	33

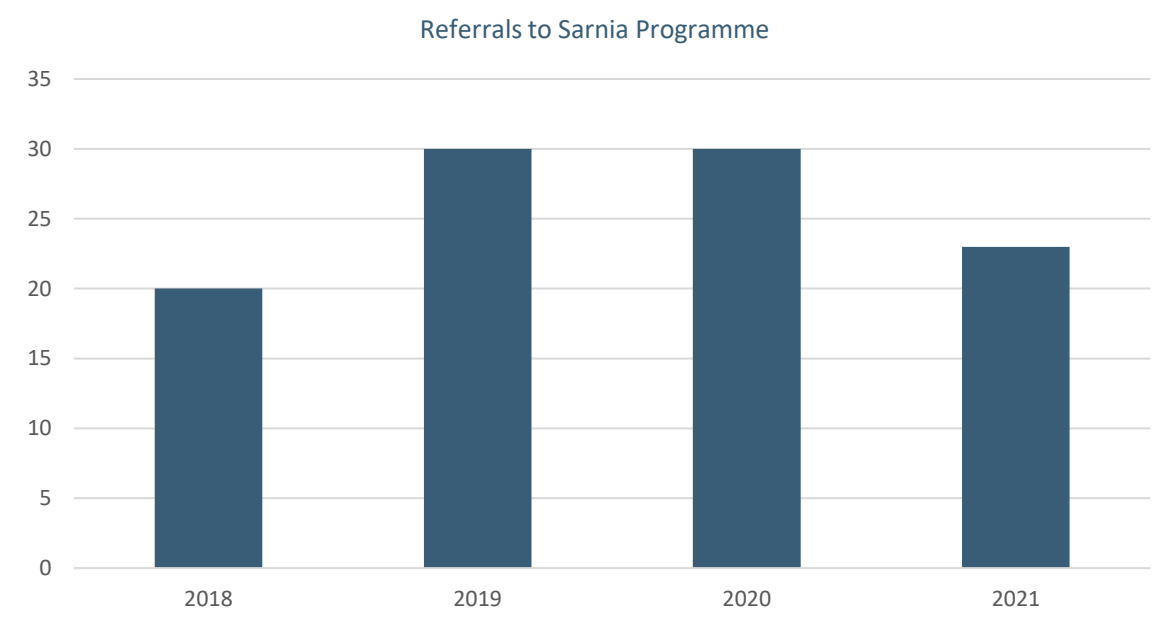
All convicted sex offenders are expected to engage with assessment and subsequent treatment under the sex offender treatment consultancy framework. Those not involved in treatment at all during 2021 will have been closed to treatment during previous years rather than not engaged with at all. There are no marked shifts in the data for treatment intervention that require particular consideration. Closures saw a rise in 2020, but have settled to pre-2020 levels again suggesting there is no specific pattern or cause for concern in relation to the increase in 2020.

### *Intimate Partner Abuse Perpetrator Programme (Sarnia)*

The harm caused by Intimate Partner Abuse (IPA) is well documented, and the Probation Service has developed specific processes for assessing and intervening with service users presenting a risk of harm to intimate partners.

Throughout 2021 the Sarnia Programme experienced a number of challenges, particularly in regard to the ongoing Covid 19 Pandemic. The second wave lockdown in early 2021 resulted in lowered referral rates, delayed group work sessions, and most significantly delays in assessment completion resulting in a substantial waiting list.

Despite these challenges however 2021 was another positive year for the Sarnia Programme. Despite the lower number of incoming referrals, 2021 saw the highest number of service users complete the programme in full since programme launch. In addition, the group was run with its highest numbers to date, with all service users successfully completing the group portion of the course. Training remained another positive feature of the programme, with training being provided to various island professionals in many different delivery styles and venues.



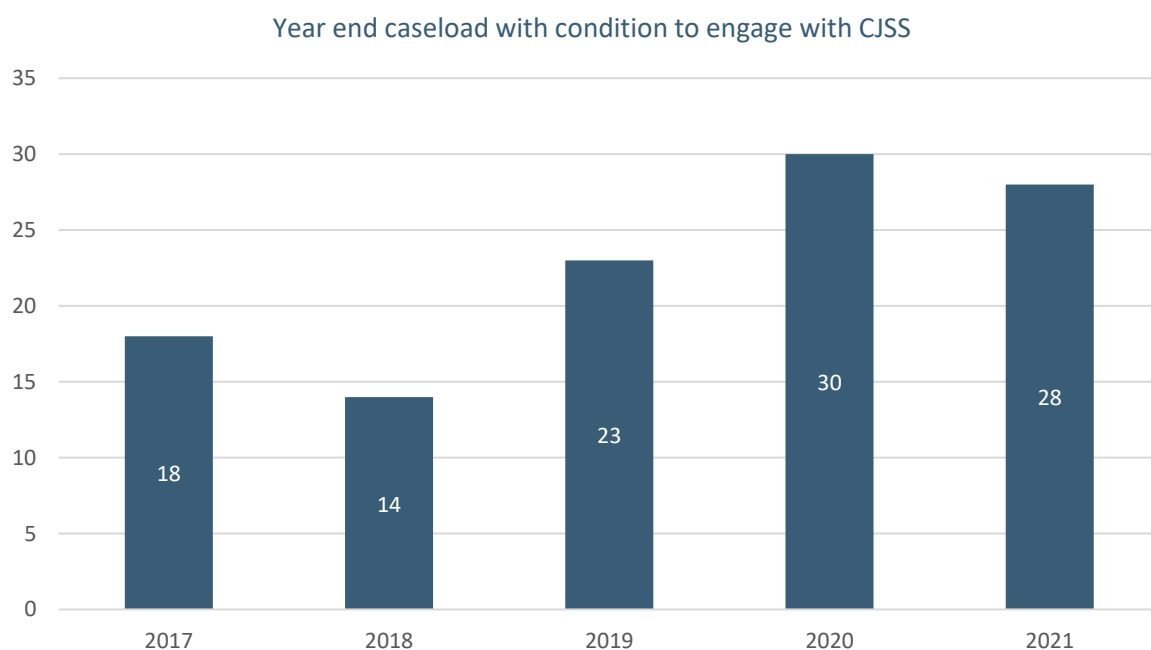
Sarnia typically runs 2 groups per year, one in spring and one in autumn. However this was disrupted in 2021 due to the Covid 19 pandemic. The second lockdown during January and February 2021 caused a delay in the spring group, which was not run until the late summer of 2021. An autumn group was therefore not run in 2021. 8 service users participated in the Summer 2021 group, the largest group that has run to date.

Alongside perpetrator intervention, is an integrated victim support service, (delivered by Safer) and referrals were completed for all those assessed, with 19 partners/ex partners and 25 children being referred for support.

The pilot period for the Sarnia Programme and its subsequent review concluded in 2020, and consequently additional resource allocation was requested in order to enable the programme to run at its expected service standards as well as increase capacity and extend the role of the Probation Service into management of high-risk domestic abuse perpetration via civil orders for example. The priority of this work stream has been noted within the Domestic Abuse Strategy and the Government Work Plan. The Probation Service is hopeful that finances will be made available in 2022 and in the meantime the team will continue to work within current resources.

### *Criminal Justice Substance Service*

Where assessment indicates that an individual's substance use is related to their likelihood of further criminal behaviour, they can have conditions of engagement with alcohol and/or drug treatment and testing either as a part of a community sentence (Probation Order or Suspended Sentence Supervision Order) or post custodial supervision. This specific and intensive intervention is delivered by the Criminal Justice Substance Service Worker, who works alongside the Probation Officer delivering the non-substance related interventions. The Criminal Justice Substance Service is delivered in partnership with In-Dependence, and we would like to take this opportunity to thank In-Dependence for their commitment and integrity to the delivery of this key service.



Since 2018 the service has seen an increase and sustenance of new cases.

### *Victim Liaison Scheme*

The Probation Service operates a Victim Liaison Scheme under section 37 of The Criminal Justice (Sex Offenders and Miscellaneous Provisions) (Bailiwick of Guernsey) Law, 2013. This provides victims of all violent and sexual offences whereby the perpetrator receives a prison sentence of 12 months and



over, with the opportunity to be informed of any developments with an offender's prison sentence. The scheme also allows victims to have input into the development of conditions of release including those prohibiting contact with the victim and exclusion zones.

Upon sentencing, the Victim Liaison co-ordinator will contact the Police Witness Care Unit to determine whether relevant victims of sexual or violent offences wish to participate in the scheme. If a victim chooses to decline contact, they are informed that should they change their mind they can opt into the scheme at any time up to the point when the sentence is completed.



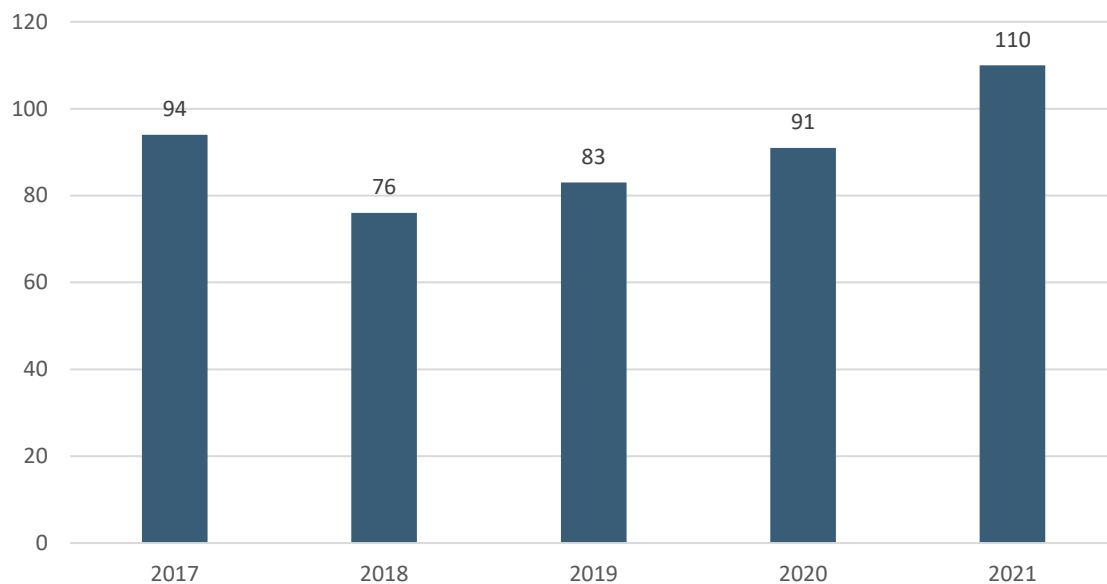
## 5.2 Community Service Team

Community Service is a sentence that enables offenders to make restitution to the community by carrying out 'unpaid work' as an alternative to a custodial sentence. Although some offenders sentenced to Community Service have committed serious offences, they are in general assessed as posing a low risk of re-offending. Many of them are in paid employment and would have a lot to lose if they had to serve the alternative custodial sentence. This leads to the majority of Orders being completed.

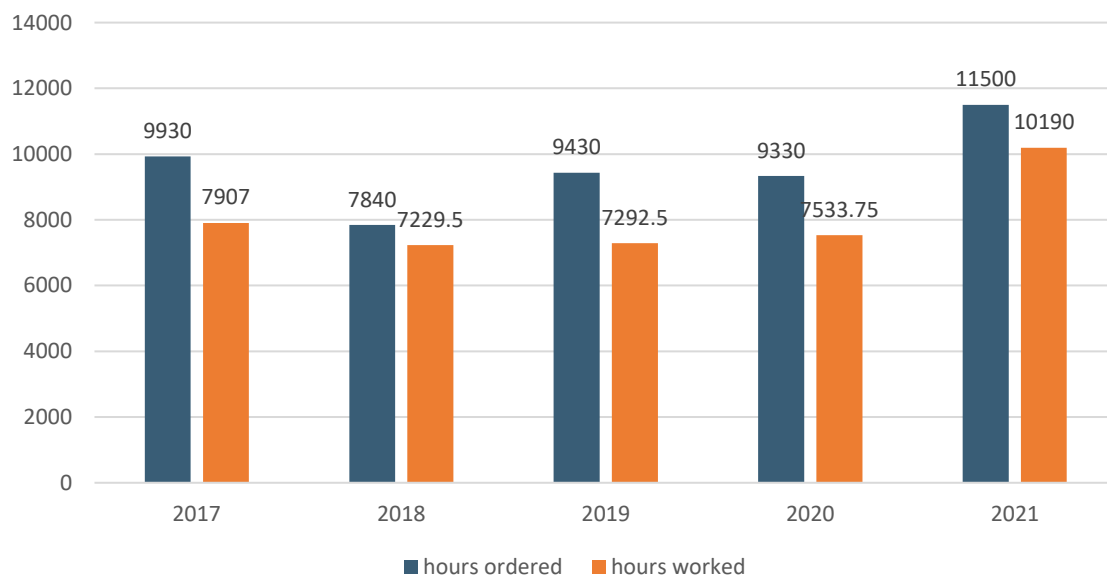
Despite the necessary restrictions and re-prioritising during periods of lockdown and accounting for those with a Covid 19 diagnoses, work on community service has continued and the Community Service Team met all of the objectives set for 2021.

110 new Orders were made during 2021, totalling 11,500 hours. The community service team have surpassed the previous year's record for the number of hours completed over the year by a considerable amount, despite ongoing lockdown restrictions. The team are hoping to secure additional supervisors to assist in running orders in 2022 given the increase in hours being ordered.

Orders imposed



Hours ordered and hours worked



Hours worked is always lower than hours imposed as some individuals will be working concurrent Orders, and some will be returned to Court in breach of their Orders for non-completion. The hours worked for the five main Beneficiaries during 2021 were as follows:

- Edible Guernsey - 1098 hours
- Les Cotils - 1859 hours
- Floral Guernsey - 995 hours
- Amherst School - 862 hours
- Grantez Mill - 476 hours

### 5.3 Prison Offender Management Unit (OMU)

This multi-disciplinary team continue to deliver services under the Seven Pathway Model which underpins our Rehabilitation & Resettlement Strategy.

- Accommodation & Support
- Employment, Education & Training
- Drugs & Alcohol
- Family & Social Support
- Life Skills and Offending Behaviour
- Health
- Financial Management.

The most significant developments during 2021 can be summarised under these pathways.

#### *Accommodation & Support*

Securing appropriate accommodation for offenders on release from custody continues to present significant challenge. It is recognised that a lack of affordable accommodation is an Island wide problem and so for our client group, who often have significant additional barriers, the problem is magnified. The OMU Manager has represented the Prison and Probation Service at workshops held by the Guernsey Community Foundation with the remit of *“researching the nature, prevalence, causes and effects of local homelessness and look at steps the islands could and should take to ensure that everybody has access to safe, secure, good-quality, affordable housing”*. We look forward to the findings and recommendations of this project being published in 2022.

#### *Employment, Education & Training*

The end of the year saw a significant increase in the employment opportunities on offer for those leaving custody which was encouraging to see. Shortages of staff in the labour market has meant that whilst previously, employers may not have been as willing to give offenders the opportunity to join their work force, they are now making approaches to the Prison to explore recruitment initiatives with us. This has enabled us to commence some positive working relationships with a number of local

companies for purposes of both Release on Temporary Licence (ROTL) placements and full-time employment opportunities for prisoners on eventual release from custody.

Via the sentence planning process chaired by Probation Officers as Case Managers, the following numbers of prisoners have been risk assessed as suitable for the ROTL Progression Scheme during 2021; the figures below demonstrate an increase on the previous year which was impacted by the Covid-19 pandemic.

Status	Number
Redband (trusted prisoner who will undertake certain tasks within the prison)	22
Voluntary & Paid Employment	18
Home Visits	13

### *Drugs & Alcohol*

Individuals within the Prison environment receive support from the third sector organisation, In-Dependence, to address drug and alcohol dependencies. The Service Level Agreement for the delivery of this support by In-dependence, came to an end in December 2021 and will be delivered by a new provider in 2022. In-dependence continue to offer pre-release and through the gate support for those prisoners identifying as needing their service in the community, the in-house service delivery for long term prisoners.

### *Health*

During 2021 the Prison Psychotherapist based in the OMU, took a lead role in planning the roll out of trauma informed approaches throughout the custodial environment. It is recognised that unaddressed trauma significantly increases the risk of mental health, substance misuse disorders and chronic physical health diseases. Prisons that adopt a trauma informed approach report fewer incidents of self-harm, substance misuse, a decrease in violent incidents and much reduced rates of reconviction. To this end, delivery of training to all prison staff and partner agencies has commenced and there is an action plan to develop further training for both staff and prisoners throughout 2022 on an endeavour to make Guernsey Prison a trauma informed establishment.

### *Financial Management*

Thanks to our developing partnership with the Community Savings LBG, we are now in a position to ensure that all prisoners who are denied access to High Street Banking facilities are given the opportunity to access an alternative form of banking. Applications are made prior to release and 1:1 appointments offered to explain the process for accounts to be activated upon release into the community. In 2021, twelve prisoners were referred to the Community Savings Team for the purpose of opening accounts.

In addition, eleven prisoners completed the Financial Planning educational group work programme which was run on two separate occasions (in 8-week blocks). Access to a legitimate means of managing

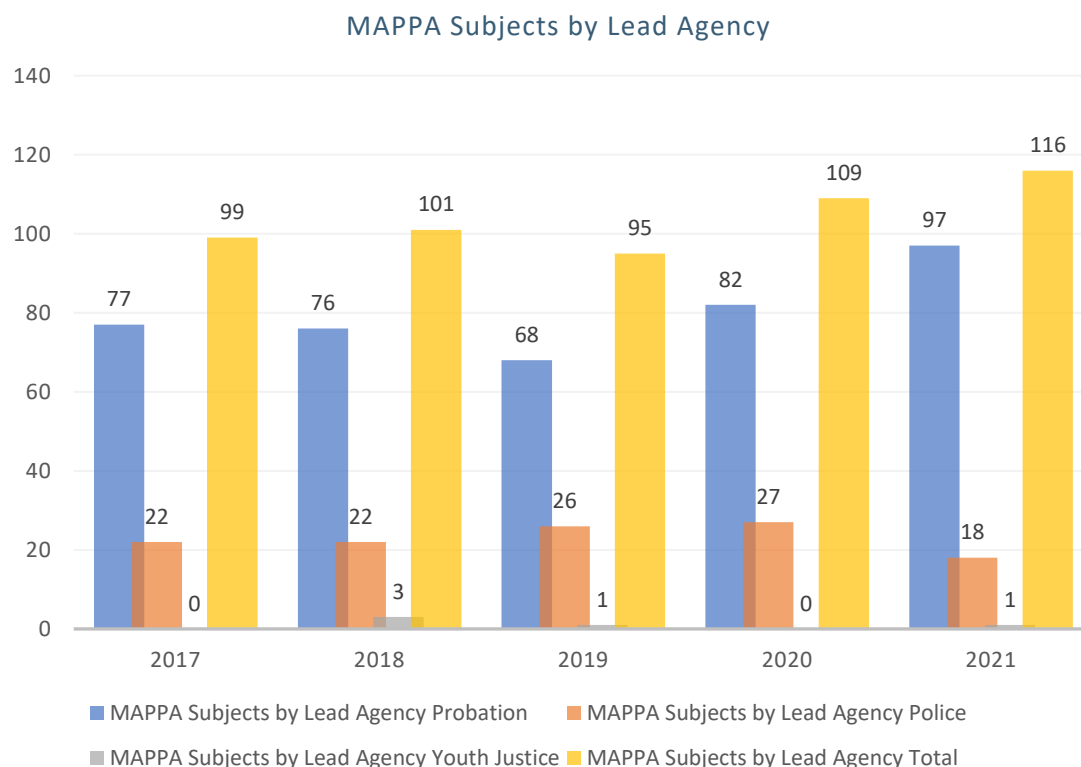
finances is a key component of our resettlement strategy as securing accommodation, employment etc is extremely difficult without these skills.

#### 5.4 Multi Agency Public Protection Arrangements (MAPPA)

Part VII of The Criminal Justice (Sex Offenders and Miscellaneous Provisions) (Bailiwick of Guernsey) Law, 2013, implemented in 2015, provides the legal framework for arrangements for monitoring and managing risks posed by certain offenders. These arrangements are designed to protect the public, including victims of crime, from serious harm by sexual and violent offenders. The Law provides a legal framework for MAPPA, and puts a duty on the Chief Probation Officer, the Head of Law Enforcement and the Prison Governor (the 'Responsible Authority') to make the arrangements.

The Multi Agency Public Protection (MAPP) Unit is a partnership between Probation and Guernsey Police designated to implement relevant sections of the Sex Offender Law including Notification Requirements (the 'sex offender register') and Multi Agency Public Protection processes.

At the end of 2021, there were one hundred and sixteen people registered in Guernsey under MAPPA. The Probation Service is the lead agent for ninety-seven of those people, meaning that the supervising Probation Officer is responsible for maintaining risk assessment and oversight of the management of risk posed by those registered. The MAPP Unit Police Officer was the lead agent for eighteen subjects and the Youth Justice Service one.



## APPENDIX 1: Annual Statistics

### Statistics Bulletin – 2021

#### *Social Enquiry Reports*

The following table records how many Social Enquiry Reports have been prepared by the Probation Service per month in 2021.

Court Type	Jan	Feb	Mar	Apr	May	Jun	Jul	Aug	Sep	Oct	Nov	Dec	TOTALS
Magistrates' Court	22	20	3	18	10	10	9	18	30	9	11	14	174
Royal Court	4	6	2	1	9	0	8	6	8	10	5	1	60
TOTALS	26	26	5	19	19	10	9	24	38	19	16	15	234

#### *Sentence Commencements*

This table highlights the number of new sentences that the Probation Service has been responsible for supervising per month in 2021.

Order Type	Jan	Feb	Mar	Apr	May	Jun	Jul	Aug	Sep	Oct	Nov	Dec	TOTALS
Automatic Conditional Release			1										1
Community Service Order	9	3	7	19	6	11	8	8	15	9	6	9	110
Immediate Adult Custody	3	2			4		4	2	1	5	2	2	25
Immediate Youth Detention			1		2		2	1	4		1	1	12
Immediate Adult Custody (no supervision)	8		4	8	3	2	3	5	12	5	4	6	60
Probation	6	3	3	6	4	2	3		2	3	3	1	36
Suspended Sentence Supervision Orders								1	2				3
Voluntary Supervision	1			1				1		1			4
TOTALS	27	8	16	34	19	15	20	18	36	23	16	19	251

#### *Termination of Orders*

The following shows how many sentences, supervised by the Probation Service, have been terminated per month in 2021.

Court Type	Jan	Feb	Mar	Apr	May	Jun	Jul	Aug	Sep	Oct	Nov	Dec	TOTALS
Adult Custody Supervision Order		1	3	2	1	2		2	1		3		15
Community Service Order	3	1	4	8	8	8	9	12	9	16	15	10	103
Extended Sentence Licence		1											1
Immediate Custody (no supervision)	10	4	4	4	4	2	5	5	6	6	4	6	59
Parole Licence				1									1
Probation Order	2		2	2	4	1	1	1	3	7	3	2	28
Suspended Sentence Supervision Order	1		1	1			1		1		1		6
Voluntary Supervision		1		1						1		1	4
Youth Detention Supervision Order			2		1	1	1	1		1	1	1	9
TOTALS	16	8	16	19	18	14	17	21	20	31	27	20	227

### Current Caseload

Below is a table which shows the current supervised, on-island caseload of Guernsey Probation Service, as of 5 January 2022.

Community Supervision		Custody	
Automatic Conditional Release	1	Immediate Adult Custody	61
Adult Custody Supervision Order	20	Immediate Youth Detention	11
Extended Sentence Licence	14	Life (Custody)	0
Parole Licence	24	<b>TOTAL IN CUSTODY</b>	<b>72</b>
Probation Order	58	<b>Community Service</b>	
Standalone Sexual Offending Prevention Order	13		
Suspended Sentence Supervision Order	3		
Voluntary Supervision	5		
Youth Detention Supervision Order	4	Combined Community Service Orders	16
		Stand Alone Community Service Orders	59
<b>TOTAL IN COMMUNITY</b>	<b>142</b>	<b>TOTAL COMMUNITY SERVICE ORDERS</b>	<b>75</b>

### Community Service

Community Service is managed by Guernsey Probation Service. Below highlights the number of new and completed Community Service Orders, the total number of months imposed as an alternative custodial sentence, and the number of hours completed by month.

Community Service	Jan	Feb	Mar	Apr	Ma	Jun	Jul	Aug	Se	Oc	No	De
New Orders	7	3	7	19	7	11	8	8	16	9	6	9
Total number of hours imposed:	650	550	600	1740	620	1040	810	850	1580	1190	820	850
Sentenced as Alternative To: (months)	14.5	28	7	32	8.5	22	28.5	27	34	57	23	22
Hours worked	597.5	69	451.75	818.75	1062.25	1154.75	1127.25	1006	1048.25	1183	967.25	494.25
Orders Completed	3	1	4	8	8	8	10	12	7	16	15	10

### Victim Liaison Scheme

Guernsey Probation Service has a statutory responsibility for a Victim Liaison Scheme where information is offered to victims of violent or sexual offences, where the offender receives a 12 month sentence or more. This information includes details about release dates, licence conditions, and information about release from prison on temporary licence. Ongoing contact with the scheme following the initial contact is voluntary on the part of the victim. Below are the details for the current caseload.

Number of victims eligible for contact with the victim liaison scheme	70
Number of victims currently engaging with victim liaison scheme	40