

Guernsey Quarterly Labour Market Bulletin

Quarter 4 2010 - Issue date 16th March 2011



POLICY COUNCIL
THE STATES OF GUERNSEY

1.1 Introduction

The Labour Market Bulletin provides a quarterly snapshot of the Guernsey labour market using claimant and contribution data provided by the States of Guernsey Social Security Department.

1.2 Headlines

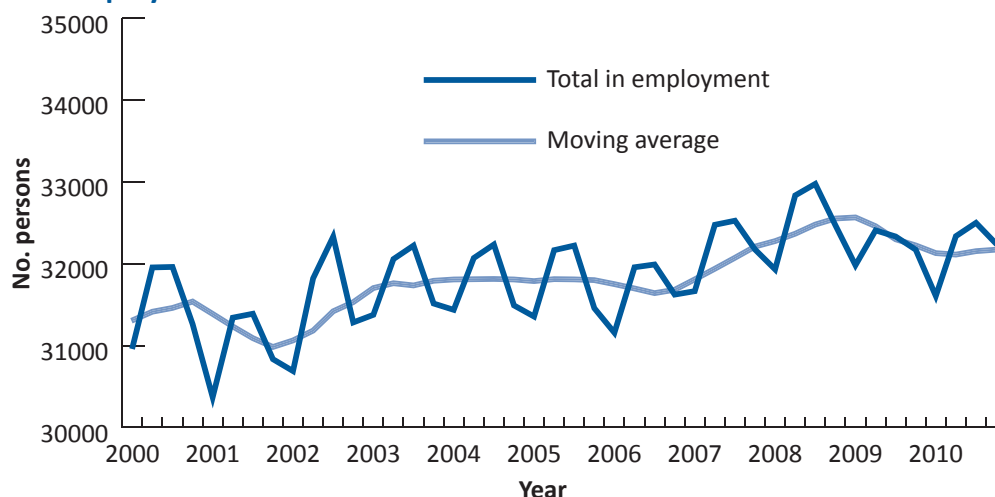
- At the end of December 2010, there were 32,244 employed and self-employed people in the Guernsey workforce, an increase of 0.2% year on year.
- There were 420 people registered as unemployed at the end of December 2010, representing 1.3% of the total workforce, the same as at the end of December 2009 and 0.1 percentage points lower than at the end of September 2010. Applying the International Labour Organisation (ILO) definition there were 276 people unemployed; an unemployment rate of 0.9%.
- There were 2,280 employing organisations in Guernsey at the end of December 2010, 15 (0.7%) more than in December 2009; the first annual increase reported since March 2009.
- Financial Services continues to be Guernsey's largest employing sector, employing 6,817 people or 21.1% of all employed or self employed people.

1.3 Headline data

Table 1.3.1: Employment, unemployment and employers

	Q4 2008	Q1 2009	Q2 2009	Q3 2009	Q4 2009	Q1 2010	Q2 2010	Q3 2010	Q4 2010
Total in employment	32,470	31,981	32,407	32,332	32,171	31,605	32,336	32,499	32,244
Registered unemployed	343	447	431	440	423	498	481	444	420
Employers	2,355	2,307	2,304	2,328	2,265	2,238	2,295	2,290	2,280

Figure 1.3.1: Employment

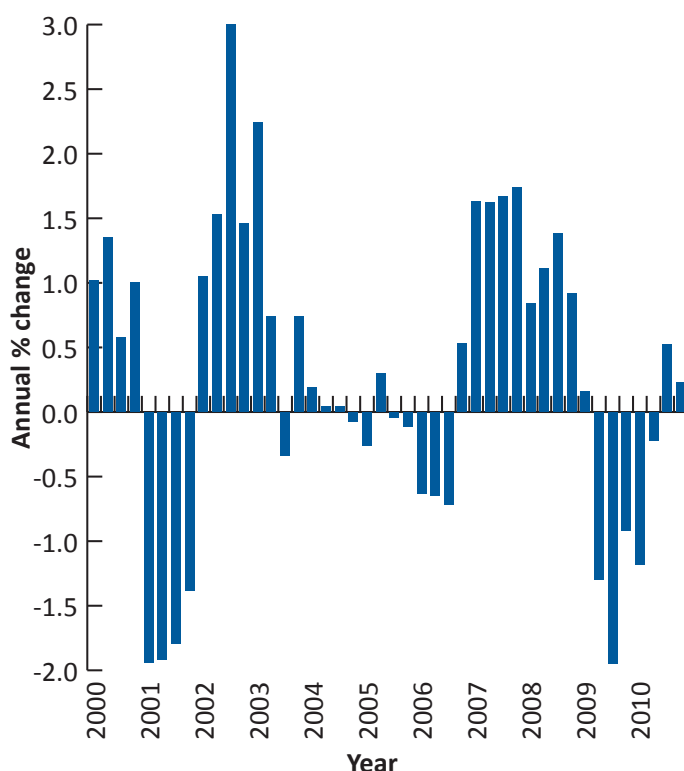


2.1 Employment

Table 2.1.1: Total in employment

Date	No. persons	Moving average	Annual % change
2006 Q4	31,622	31,681	0.5
2007 Q1	31,664	31,808	1.6
2007 Q2	32,475	31,938	1.6
2007 Q3	32,525	32,072	1.7
2007 Q4	32,173	32,209	1.7
2008 Q1	31,930	32,276	0.8
2008 Q2	32,834	32,366	1.1
2008 Q3	32,975	32,478	1.4
2008 Q4	32,470	32,552	0.9
2009 Q1	31,981	32,565	0.2
2009 Q2	32,407	32,458	-1.3
2009 Q3	32,332	32,298	-2.0
2009 Q4	32,171	32,223	-0.9
2010 Q1	31,605	32,129	-1.2
2010 Q2	32,336	32,111	-0.2
2010 Q3	32,499	32,153	0.5
2010 Q4	32,244	32,171	0.2

Figure 2.1.1: Annual percentage change in total employment



Employed persons are classified by the Social Security Department as those who work for wages or a salary under a contract of service. Self employed persons are those who are in business for themselves, not under the control of an employer.

Total employment is calculated by adding the number of employed persons to the number of self employed persons.

In December 2010 there were a total of 32,244 people in employment in Guernsey, 0.2% (or 73 people) more than in December 2009 (see [table 2.1.1](#)).

Total employment in Guernsey shows seasonal variations due to more people being employed in certain sectors (eg hospitality and horticulture) during the summer. As a result of this, total employment in Guernsey is typically higher in the second and third quarters (ending June and September) than in the first and fourth quarters (ending March and December).

Trends in the moving average (included in [table 2.1.1](#) and shown graphically in [figure 1.3.1](#)) or annual percentage changes (see [figure 2.1.1](#)) give a clearer indication of how the level of employment has been changing over the past ten years.

In total, over the ten years ending December 2010, there has been a cumulative increase of 3.1% in the number of people in employment.

3.1 Unemployment

As show in [table 3.1.1](#), there were 420 people registered as unemployed (ie claiming unemployment or jobseeker benefits) in December 2010, 3 people less than the previous year.

Of those people, 276 would fit the International Labour Organisation (ILO) definition of being unemployed¹, which excludes anybody on a government training scheme (such as the Community and Environmental Projects Scheme, which employed 25 people at the end of December 2010) or anybody who carries out at least one hour's paid work in a week (which could be the case for some of those claiming only supplementary jobseeker benefit).

The percentage of the total workforce registered unemployed (ie the unemployment rate) was 1.3% at the end of December 2010, the same rate as in December 2009.

The unemployment rate using the ILO definition was 0.9% at the end of December 2010, 0.1 percentage points lower than in December 2009 (see [figure 3.1.1](#)).

The latter measure is comparable (in terms of method) with the rate in Jersey, which was 2.2% in June 2010² and the UK rate, which was 7.9% at the end of December 2010³.

¹ See <http://www.statistics.gov.uk/statbase/Product.asp?vlnk=2054>

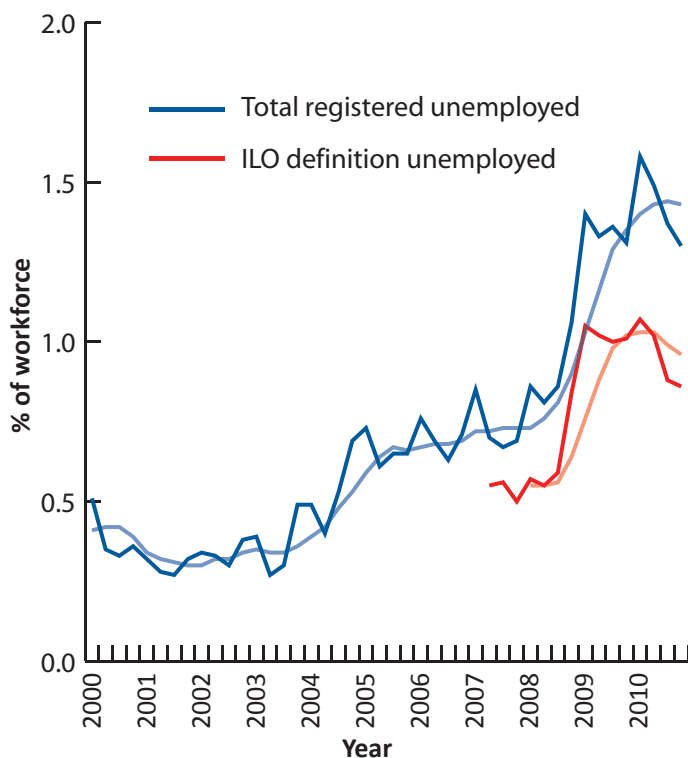
² See www.gov.je/statistics (figures updated bi-annually, December 2010 figures due to be published in April 2011)

³ Figures for the UK are taken from www.statistics.gov.uk

Table 3.1.1: Number and percentage of workforce unemployed

		No. persons		% of workforce	
		Total registered unemployed	ILO definition unemployed	Total registered unemployed	ILO definition unemployed
2006	Q4	223	-	0.7	-
2007	Q1	269	214	0.8	0.7
2007	Q2	226	179	0.7	0.6
2007	Q3	219	181	0.7	0.6
2007	Q4	223	162	0.7	0.5
2008	Q1	274	183	0.9	0.6
2008	Q2	266	182	0.8	0.6
2008	Q3	284	196	0.9	0.6
2008	Q4	343	273	1.1	0.8
2009	Q1	447	335	1.4	1.0
2009	Q2	431	330	1.3	1.0
2009	Q3	440	324	1.4	1.0
2009	Q4	423	325	1.3	1.0
2010	Q1	498	339	1.6	1.1
2010	Q2	481	329	1.5	1.0
2010	Q3	444	285	1.4	0.9
2010	Q4	420	276	1.3	0.9

Figure 3.1.1: Percentage of workforce unemployed



4.1 Employees and self employed

Table 4.1.1: Employees and self employed

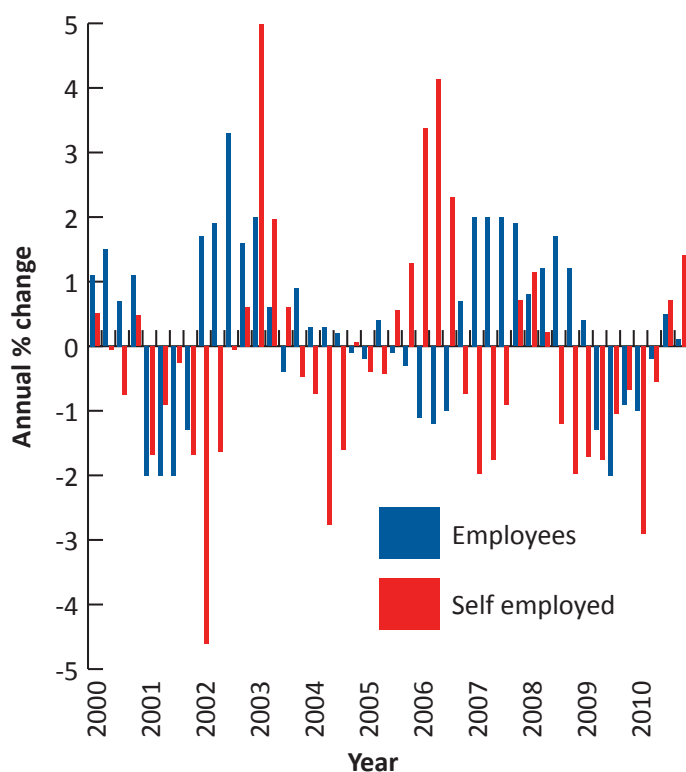
		No. persons		Annual % change	
		Employees	Self employed	Employees	Self employed
2006	Q4	28,502	3,120	0.7	-0.7
2007	Q1	28,543	3,121	2.0	-2.0
2007	Q2	29,331	3,144	2.0	-1.8
2007	Q3	29,351	3,174	2.0	-0.9
2007	Q4	29,031	3,142	1.9	0.7
2008	Q1	28,773	3,157	0.8	1.2
2008	Q2	29,683	3,151	1.2	0.2
2008	Q3	29,839	3,136	1.7	-1.2
2008	Q4	29,390	3,080	1.2	-2.0
2009	Q1	28,878	3,103	0.4	-1.7
2009	Q2	29,311	3,096	-1.3	-1.7
2009	Q3	29,229	3,103	-2.0	-1.1
2009	Q4	29,112	3,059	-0.9	-0.7
2010	Q1	28,592	3,013	-1.0	-2.9
2010	Q2	29,257	3,079	-0.2	-0.5
2010	Q3	29,374	3,125	0.5	0.7
2010	Q4	29,142	3,102	0.1	1.4

At the end of December 2010, there were 29,142 employees (ie those working for an employer) in Guernsey, 30 (or 0.1%) more than in December 2009 (see [table 4.1.1](#) and [figure 4.1.1](#)).

The number of employees is subject to the seasonal variations described on the previous page and is typically higher in the June and September, than the March and December of any given year. As expected the number of employees in December 2010 was lower (by 232 people) than in September 2010.

There were 3,102 self employed people at the end of December 2010, 43 (1.4%) more than the previous year (see [table 4.1.1](#)). The number of self employed people does not show regular seasonal increases and decreases to the same extent as the number of employees. However, there was an decrease of 23 people (or 0.7%) between September and December 2010.

Figure 4.1.1: Annual percentage change in employees and self employed



Of the total in employment, 9.6% were self employed in December 2010.

4.2 Employment by gender

In December 2010, there were 14,771 females in employment, 74 (or 0.5%) less than in December 2009 (see [table 4.2.1](#) and [figure 4.2.1](#)). However, the number of males in employment increased during that period; by 147 (0.8%) to 17,473.

The proportion of the workforce comprised of females was 45.8% at the end of December 2010, a slightly lower proportion than in December 2009, when 46.1% of the workforce was female.

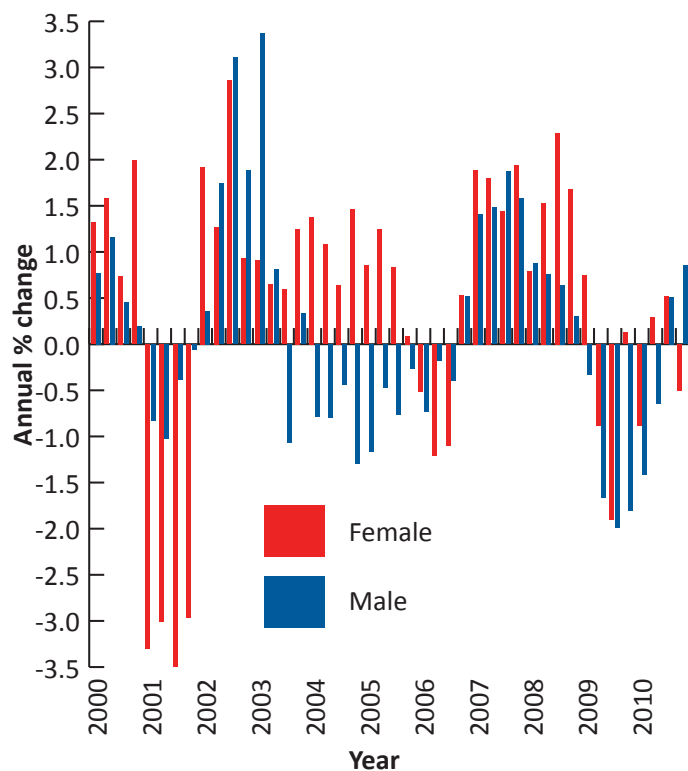
Over the past decade the number of females in employment has increased by 640 (or 4.5%), compared to an increase of 341 males (2.0%).

Please see the [Sustainable Guernsey Report](#) for more information on employment rates by age and gender, which are available annually.

Table 4.2.1: Employment by gender

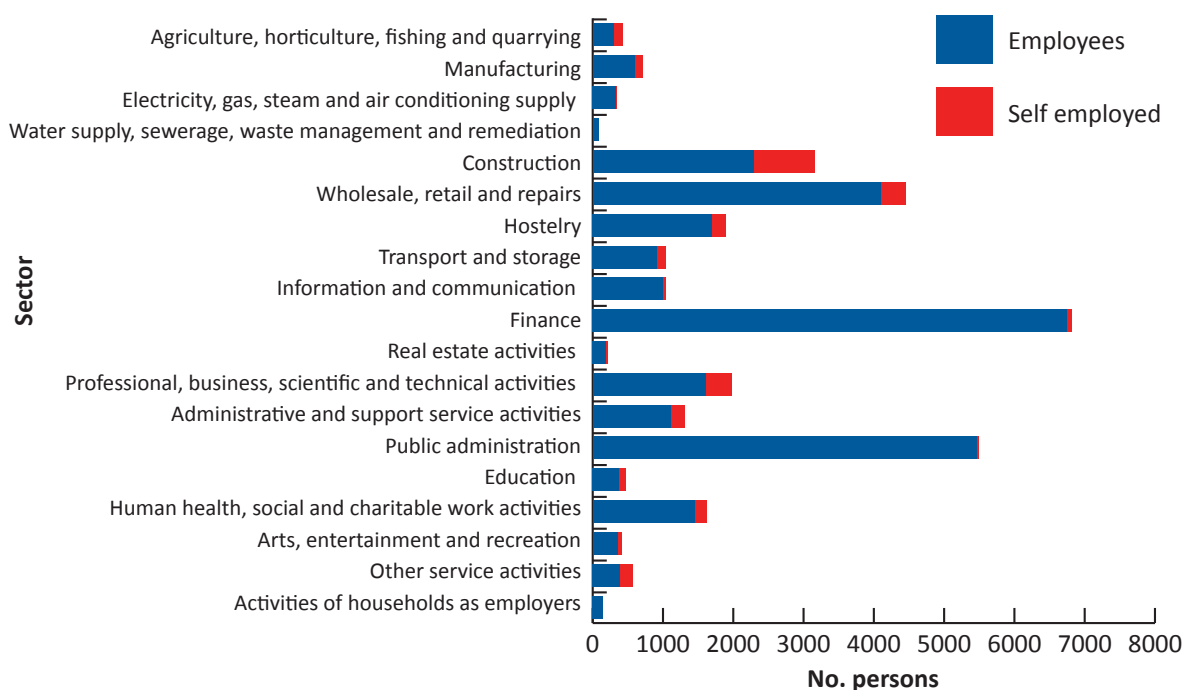
		No. persons		Annual % change	
		Female	Male	Female	Male
2006	Q4	14,304	17,318	0.5	-2.9
2007	Q1	14,360	17,304	1.9	1.4
2007	Q2	14,741	17,734	1.8	1.5
2007	Q3	14,683	17,842	1.4	1.9
2007	Q4	14,581	17,592	1.9	1.6
2008	Q1	14,474	17,456	0.8	0.9
2008	Q2	14,966	17,868	1.5	0.8
2008	Q3	15,019	17,956	2.3	0.6
2008	Q4	14,826	17,644	1.7	0.3
2009	Q1	14,582	17,399	0.7	-0.3
2009	Q2	14,835	17,572	-0.9	-1.7
2009	Q3	14,734	17,598	-1.9	-2.0
2009	Q4	14,845	17,326	0.1	-1.8
2010	Q1	14,453	17,152	-0.9	-1.4
2010	Q2	14,878	17,458	0.3	-0.6
2010	Q3	14,811	17,688	0.5	0.5
2010	Q4	14,771	17,473	-0.5	0.8

Figure 4.2.1: Annual percentage change in employment by gender



4.3 Employment by economic sector

Figure 4.3.1: Employment by economic sector at December 2010



Employers and employees can be analysed by economic sector for a more detailed picture of the types of economic activity they are involved in. A breakdown of the activities included in each of the economic sector codes used in this bulletin can be found on our website www.gov.gg/ecodes.

As show in [figure 4.3.1](#) and [table 4.4.1](#), the largest proportion (21.1%) of people in employment in Guernsey worked in the finance sector in December 2010. The annual change in employment in this sector was a decrease of 3.3% (see [table 4.4.1](#) and [figure 4.4.1](#)).

The sector which showed the largest percentage change in the number of employees and self employed was the water supply, sewerage, waste management and remediation activities sector, which had an increase of 24%, from 75 to 93 people.

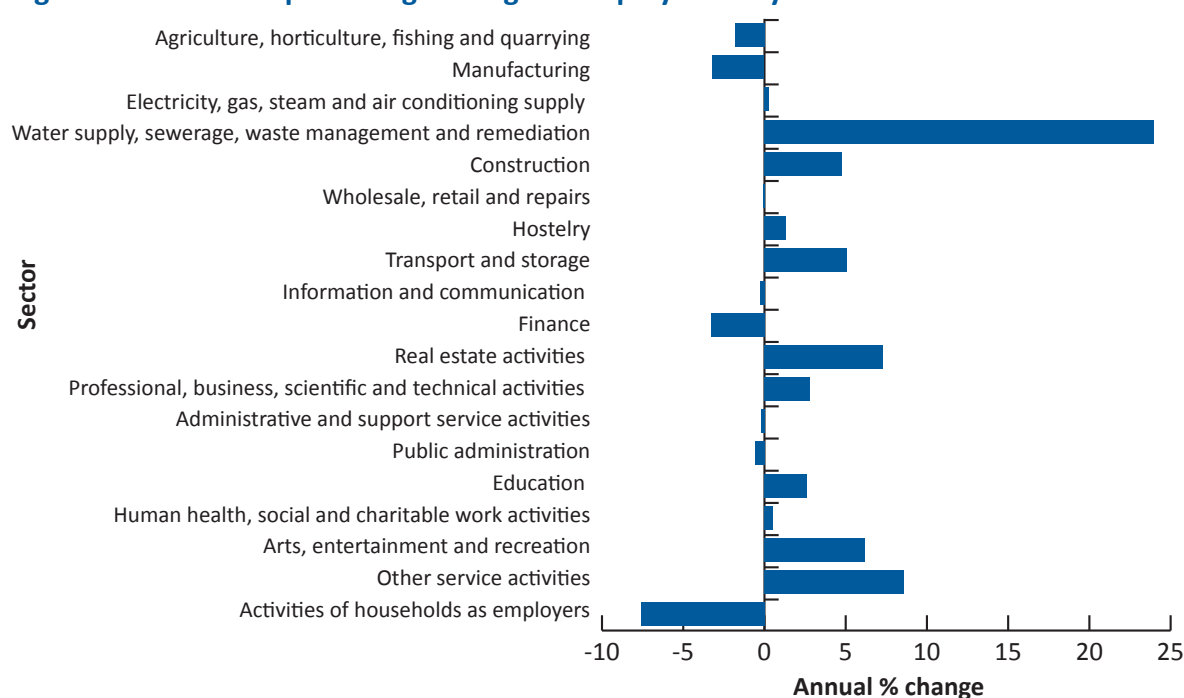
By sector, the highest proportion of self employed people (28.4% or 880 people) worked in construction in December 2010.

4.4 Employees and self employed by economic sector and gender

Figure 4.4.1: Employment by economic sector at December 2010

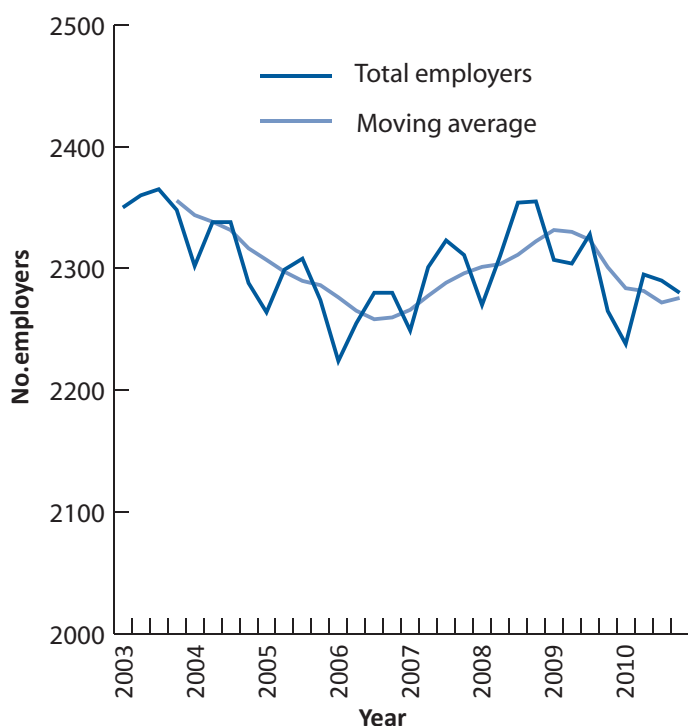
	No. employees			No. self employed			Total no. in employment	% of total for all sectors	Annual % change
	Female	Male	Total	Female	Male	Total			
Agriculture, horticulture, fishing and quarrying	148	146	294	10	130	140	434	1.3	-1.8
Manufacturing	178	419	597	24	96	120	717	2.2	-3.2
Electricity, gas, steam and air conditioning supply	59	270	329	0	5	5	334	1.0	0.3
Water supply, sewerage, waste management and remediation activities	13	68	81	0	12	12	93	0.3	24.0
Construction	141	2,145	2,286	19	861	880	3,166	9.8	4.8
Wholesale, retail and repairs	1,789	2,308	4,097	85	274	359	4,456	13.8	-0.1
Hostelry	686	1,010	1,696	62	129	191	1,887	5.9	1.3
Transport and storage	191	723	914	11	110	121	1,035	3.2	5.1
Information and communication	281	715	996	12	34	46	1,042	3.2	-0.3
Finance	3,736	3,016	6,752	9	56	65	6,817	21.1	-3.3
Real estate activities	98	89	187	5	15	20	207	0.6	7.3
Professional, business, scientific and technical activities	946	659	1,605	62	320	382	1,987	6.2	2.8
Administrative and support service activities	531	576	1,107	31	181	212	1,319	4.1	-0.2
Public administration	3,289	2,170	5,459	4	30	34	5,493	17.0	-0.6
Education	277	97	374	73	18	91	465	1.4	2.6
Human health, social and charitable work activities	1,188	258	1,446	81	102	183	1,629	5.1	0.5
Arts, entertainment and recreation	151	200	351	24	35	59	410	1.3	6.2
Other service activities	308	80	388	124	56	180	568	1.8	8.6
Activities of households as employers	105	39	144	2	0	2	146	0.5	-7.6
Other	18	21	39	0	0	0	39	0.1	-
Total for all sectors	14,133	15,009	29,142	638	2,464	3,102	32,244	100	0.2

Figure 4.4.1: Annual percentage change in employment by economic sector at December 2010



5.1 Employers by size

Figure 5.1.1: Total employers



At the end of December 2010, there were 2,280 employers in Guernsey, 15 (0.7%) more than the previous year (see [figure 5.1.1](#) and [table 5.1.1](#)). This is the first annual increase reported since March 2009.

There were 6 organisations employing 250 or more people in December 2010, one less than in December the previous year.

The majority of sectors saw an increase in employers over the year ending December 2010 (see [table 5.2.1](#)). Please note that some of the percentage changes are based on small numbers and can therefore seem large relative to the actual change in numbers.

Of the organisations which employed more than 50 people, 36 (32.1%) were in the finance sector at the end of December 2010.

Table 5.1.1: Employers by size (number of employees)

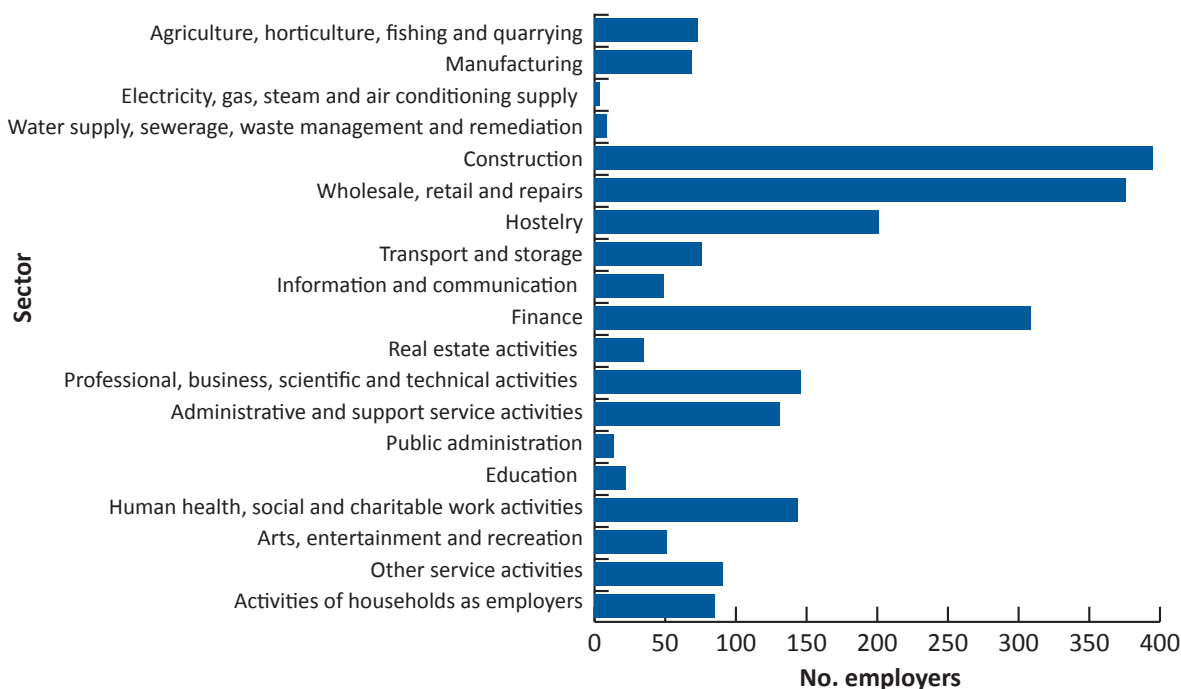
		No. employers by size (number of employees)								Total no. employers	Annual % change
		1	2 to 5	6 to 10	11 to 25	26 to 50	51 to 100	101 to 250	250+		
2008	Q2	595	830	366	284	120	69	38	8	2,310	0.4
2008	Q3	616	822	372	300	126	70	39	9	2,354	1.3
2008	Q4	632	842	359	291	116	72	34	9	2,355	1.9
2009	Q1	620	838	351	278	110	68	34	8	2,307	1.6
2009	Q2	597	841	362	281	111	71	33	8	2,304	-0.3
2009	Q3	596	851	359	289	112	76	37	8	2,328	-1.1
2009	Q4	589	815	366	264	120	69	35	7	2,265	-3.8
2010	Q1	606	788	355	265	113	73	32	6	2,238	-3.0
2010	Q2	606	822	370	264	116	79	31	7	2,295	-0.4
2010	Q3	588	811	370	284	115	79	36	7	2,290	-1.6
2010	Q4	599	816	359	273	121	70	36	6	2,280	0.7

5.2 Employers by economic sector and size

Figure 5.2.1: Employers by economic sector and size (number of employees) at December 2010

	No. employers by size (number of employees)					% of total for all sectors	Annual % change
	1 to 5	6 to 25	26 to 50	51 or more	Total		
Agriculture, horticulture, fishing and quarrying	54	16	2	1	73	3.2	-1.4
Manufacturing	37	28	1	3	69	3.0	-2.8
Electricity, gas, steam and air conditioning supply	1	1	0	2	4	0.2	0.0
Water supply, sewerage, waste management and remediation activities	6	2	0	1	9	0.4	50.0
Construction	278	104	7	6	395	17.3	1.5
Wholesale, retail and repairs	234	108	18	16	376	16.5	0.8
Hostelry	102	79	12	8	201	8.8	1.5
Transport and storage	41	21	10	4	76	3.3	1.3
Information and communication	29	12	3	5	49	2.1	-5.8
Finance	134	101	38	36	309	13.6	2.0
Real estate activities	26	7	2	0	35	1.5	0.0
Professional, business, scientific and technical activities	87	45	7	7	146	6.4	2.1
Administrative and support service activities	86	29	10	6	131	5.7	-4.4
Public administration	10	1	0	3	14	0.6	-6.7
Education	12	5	1	4	22	1.0	4.8
Human health, social and charitable work activities	87	41	8	8	144	6.3	2.9
Arts, entertainment and recreation	35	14	1	1	51	2.2	-7.3
Other service activities	75	14	1	1	91	4.0	24.7
Activities of households as employers	81	4	0	0	85	3.7	-15.0
Total for all sectors	1,415	632	121	112	2,280	1.0	0.7

Figure 5.2.1: Employers by economic sector at December 2010



6.1 Contact details and further information

A summary of the business activities which make up each of the nineteen economic sectors used throughout this bulletin is available online at: www.gov.gg/ecodes.

You may also be interested in other publications from the Policy and Research Unit, which are all available online at www.gov.gg/pru.

Please contact Helen Walton (Senior Research Officer) for further information.

Policy and Research Unit
Sir Charles Frossard House
La Charroterie
St Peter Port
Guernsey
GY1 1FH

Tel: (01481) 717240

Fax: (01481) 713787

e-mail: policy.research@gov.gg

web: www.gov.gg/pru