

# Guernsey Quarterly Labour Market Bulletin

Quarter 1 2011 - Issue date 15th June 2011



**POLICY COUNCIL**  
THE STATES OF GUERNSEY

## 1.1 Introduction

The Labour Market Bulletin provides a quarterly snapshot of the Guernsey labour market using claimant and contribution data provided by the States of Guernsey Social Security Department.

## 1.2 Headlines

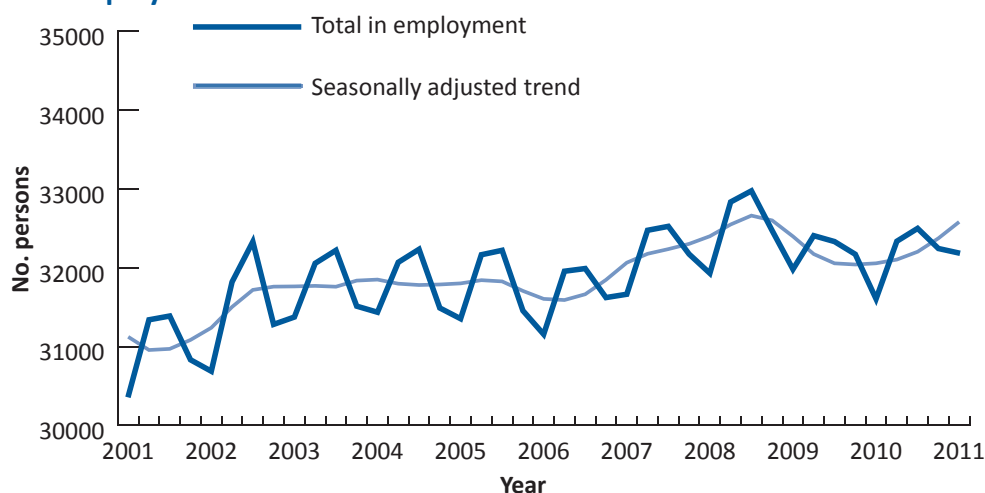
- At the end of March 2011, there were 32,186 employed and self-employed people in the Guernsey workforce, 581 people or 1.8% more than at the same time the previous year. This is the largest annual percentage increase in total employment since 2003.
- There were 468 people registered as unemployed at the end of March 2011, representing 1.5% of the total workforce, 0.1 percentage points less than at the end of March 2010.
- There were 2,279 employing organisations in Guernsey at the end of March 2011, an increase of 41 organisations since March 2010.
- The number of people employed in Financial Services (Guernsey's largest employing sector) increased by 1.0% in the year ending March 2011 to 6,903 people, representing 21.4% of all employed or self employed people.

## 1.3 Headline data

**Table 1.3.1: Employment, unemployment and employers**

	Q1 2009	Q2 2009	Q3 2009	Q4 2009	Q1 2010	Q2 2010	Q3 2010	Q4 2010	Q1 2011
<b>Total in employment</b>	31,981	32,407	32,332	32,171	31,605	32,336	32,499	32,244	32,186
<b>Registered unemployed</b>	447	431	440	423	498	481	444	420	468
<b>Employers</b>	2,307	2,304	2,328	2,265	2,238	2,295	2,290	2,280	2,279

**Figure 1.3.1: Employment**

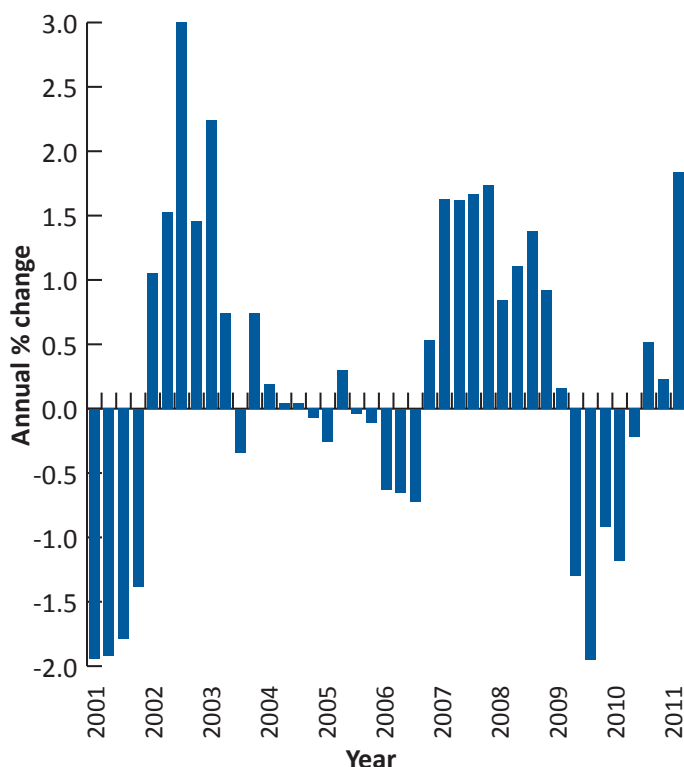


## 2.1 Employment

**Table 2.1.1: Total in employment**

Date	No. persons	Annual % change
2007 Q1	31,664	1.6
2007 Q2	32,475	1.6
2007 Q3	32,525	1.7
2007 Q4	32,173	1.7
2008 Q1	31,930	0.8
2008 Q2	32,834	1.1
2008 Q3	32,975	1.4
2008 Q4	32,470	0.9
2009 Q1	31,981	0.2
2009 Q2	32,407	-1.3
2009 Q3	32,332	-2.0
2009 Q4	32,171	-0.9
2010 Q1	31,605	-1.2
2010 Q2	32,336	-0.2
2010 Q3	32,499	0.5
2010 Q4	32,244	0.2
2011 Q1	32,186	1.8

**Figure 2.1.1: Annual percentage change in total employment**



Employed persons are classified by the Social Security Department as those who work for wages or a salary under a contract of service. Self employed persons are those who are in business for themselves, not under the control of an employer.

Total employment is calculated by adding the number of employed persons to the number of self employed persons.

In the year ending March 2011 the number of people in employment increased by 581 (1.8%) to 32,186 (see [table 2.1.1](#) and [figure 2.1.1](#)); the largest annual percentage increase since March 2003.

In total, over the ten years ending March 2011, there has been a cumulative increase of 6.0% in the number of people in employment.

Total employment in Guernsey shows seasonal variations as certain sectors (eg hostelry and horticulture) employ more people during the summer than in the winter. As a result of this, total employment in Guernsey is typically higher in the second and third quarters (ending June and September) than in the first and fourth quarters (ending March and December).

The seasonally adjusted trend shown graphically in [figure 1.3.1](#) indicates that underlying employment has been growing on a quarterly basis since the first quarter of 2010 and that the rate of quarterly growth has increased in each of the last four quarters. The trend is calculated using the Census X-12 method, developed by the US Census Bureau

## 3.1 Unemployment

As show in [table 3.1.1](#), there were 468 people registered as unemployed (ie claiming unemployment or jobseeker benefits) in March 2011, 30 people less than the previous year.

Of those people, 301 would fit the International Labour Organisation (ILO) definition of being unemployed<sup>1</sup>, which excludes anybody on a government training scheme (such as the Community and Environmental Projects Scheme) or anybody who carries out at least one hour's paid work in a week (which could be the case for some of those claiming only supplementary jobseeker benefit).

The percentage of the total workforce registered unemployed (ie the unemployment rate) was 1.5% at the end of March 2011, 0.1 percentage points lower than at the same time the previous year.

The unemployment rate using the ILO definition was 0.9% at the end of March 2011, 0.2 percentage points lower than in March 2010 (see [figure 3.1.1](#)).

The latter measure is comparable (in terms of method) with the rate published in Jersey, which was 2.2% in December 2010<sup>2</sup> and the UK rate, which was 7.7% at the end of March 2010<sup>3</sup>.

<sup>1</sup> See <http://www.statistics.gov.uk/statbase/Product.asp?vlnk=2054>

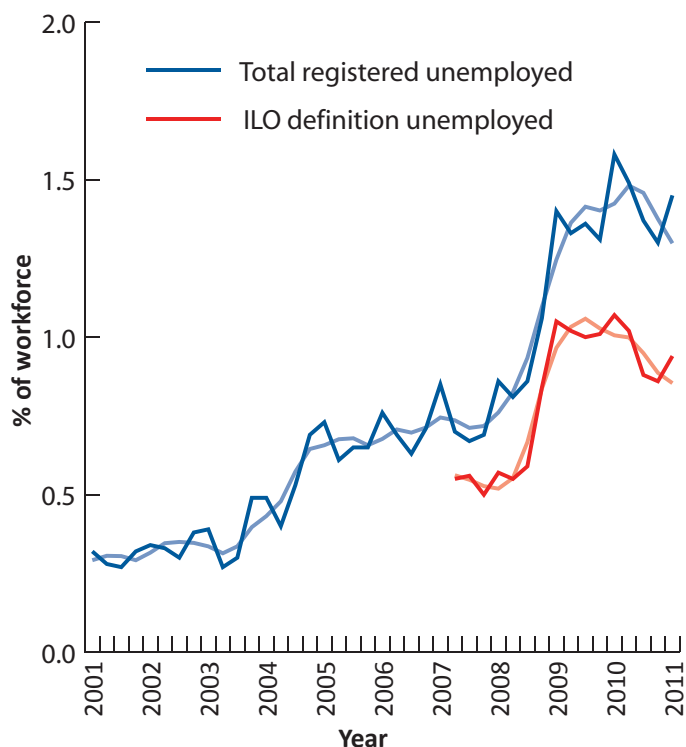
<sup>2</sup> See [www.gov.je/statistics](http://www.gov.je/statistics) (figures updated bi-annually)

<sup>3</sup> Figures for the UK are taken from [www.statistics.gov.uk](http://www.statistics.gov.uk)

**Table 3.1.1: Number and percentage of workforce unemployed**

		No. persons		% of workforce	
		Total registered unemployed	ILO definition unemployed	Total registered unemployed	ILO definition unemployed
2007	Q1	269	214	0.8	0.7
2007	Q2	226	179	0.7	0.6
2007	Q3	219	181	0.7	0.6
2007	Q4	223	162	0.7	0.5
2008	Q1	274	183	0.9	0.6
2008	Q2	266	182	0.8	0.6
2008	Q3	284	196	0.9	0.6
2008	Q4	343	273	1.1	0.8
2009	Q1	447	335	1.4	1.0
2009	Q2	431	330	1.3	1.0
2009	Q3	440	324	1.4	1.0
2009	Q4	423	325	1.3	1.0
2010	Q1	498	339	1.6	1.1
2010	Q2	481	329	1.5	1.0
2010	Q3	444	285	1.4	0.9
2010	Q4	420	276	1.3	0.9
2011	Q1	468	301	1.5	0.9

**Figure 3.1.1: Percentage of workforce unemployed**



## 4.1 Employees and self employed

**Table 4.1.1: Employees and self employed**

		No. persons		Annual % change	
		Employees	Self employed	Employees	Self employed
2007	Q1	28,543	3,121	2.0	-2.0
2007	Q2	29,331	3,144	2.0	-1.8
2007	Q3	29,351	3,174	2.0	-0.9
2007	Q4	29,031	3,142	1.9	0.7
2008	Q1	28,773	3,157	0.8	1.2
2008	Q2	29,683	3,151	1.2	0.2
2008	Q3	29,839	3,136	1.7	-1.2
2008	Q4	29,390	3,080	1.2	-2.0
2009	Q1	28,878	3,103	0.4	-1.7
2009	Q2	29,311	3,096	-1.3	-1.7
2009	Q3	29,229	3,103	-2.0	-1.1
2009	Q4	29,112	3,059	-0.9	-0.7
2010	Q1	28,592	3,013	-1.0	-2.9
2010	Q2	29,257	3,079	-0.2	-0.5
2010	Q3	29,374	3,125	0.5	0.7
2010	Q4	29,142	3,102	0.1	1.4
2011	Q1	29,119	3,067	1.8	1.8

The number of employees is subject to the seasonal variations described on the previous page and is typically higher in the June and September, than the March and December of any given year.

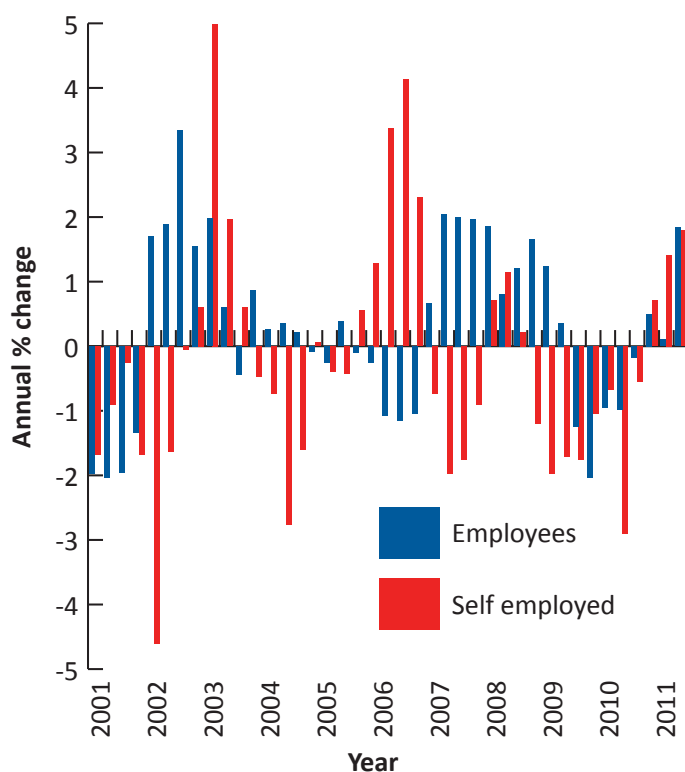
The number of self employed people does not show regular seasonal increases and decreases to the same extent as the number of employees.

At the end of March 2011, there were 29,119 employees (i.e. those working for an employer) in Guernsey, 527 (or 1.8%) more than in March 2010 (see [table 4.1.1](#) and [figure 4.1.1](#)).

There were also 3,067 self employed people at the end of March 2011, 54 (1.8%) more than the previous year.

Self employed people accounted for the same proportion of total employment (9.5%) in March 2011 as in March 2010. However this was 0.7 percentage points less than the proportion of self employed in March 2001.

**Figure 4.1.1: Annual percentage change in employees and self employed**



## 4.2 Employment by gender

In March 2011, there were 14,726 females in employment, 273 (or 1.9%) more than in March 2010 (see [table 4.2.1](#) and [figure 4.2.1](#)). The number of males in employment increased by 308 (1.8%) to 17,460 in the same period.

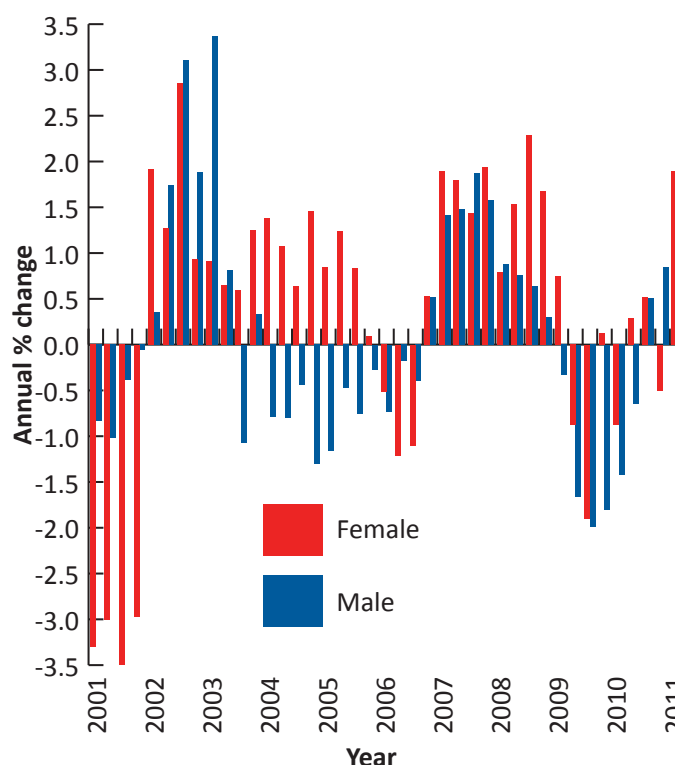
The proportion of the workforce comprised of females was 45.8% at the end of March 2011, a slightly higher proportion (by 0.1 percentage points) than at the same time the previous year and 1.4 percentage points higher than at the end of March 2001.

More information on employment rates by age and gender, which are available annually, will be published in the States Strategic Monitoring Report 2011.

**Table 4.2.1: Employment by gender**

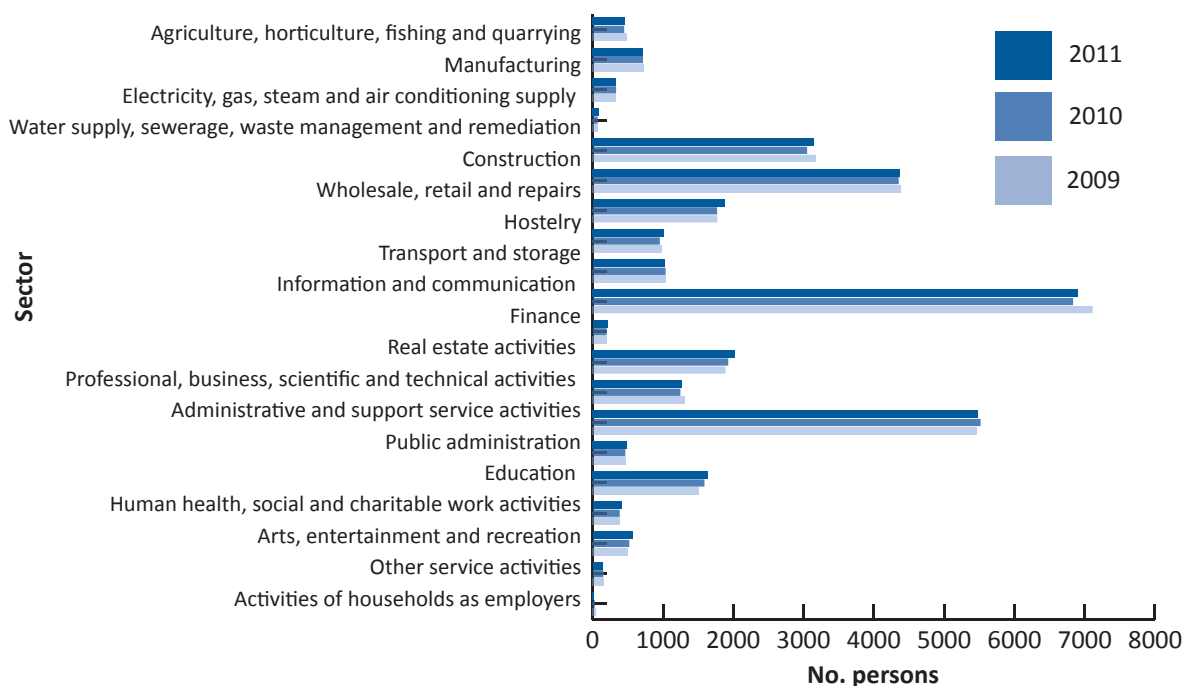
		No. persons		Annual % change	
		Female	Male	Female	Male
2007	Q1	14,360	17,304	1.9	1.4
2007	Q2	14,741	17,734	1.8	1.5
2007	Q3	14,683	17,842	1.4	1.9
2007	Q4	14,581	17,592	1.9	1.6
2008	Q1	14,474	17,456	0.8	0.9
2008	Q2	14,966	17,868	1.5	0.8
2008	Q3	15,019	17,956	2.3	0.6
2008	Q4	14,826	17,644	1.7	0.3
2009	Q1	14,582	17,399	0.7	-0.3
2009	Q2	14,835	17,572	-0.9	-1.7
2009	Q3	14,734	17,598	-1.9	-2.0
2009	Q4	14,845	17,326	0.1	-1.8
2010	Q1	14,453	17,152	-0.9	-1.4
2010	Q2	14,878	17,458	0.3	-0.6
2010	Q3	14,811	17,688	0.5	0.5
2010	Q4	14,771	17,473	-0.5	0.8
2011	Q1	14,726	17,460	1.9	1.8

**Figure 4.2.1: Annual percentage change in employment by gender**



## 4.3 Employment by economic sector

**Figure 4.3.1: Employment by economic sector at March each year**



Employers and employees can be analysed by economic sector for a more detailed picture of the types of economic activity they are involved in. A breakdown of the activities included in each of the economic sector codes used in this bulletin can be found on our website [www.gov.gg/ecodes](http://www.gov.gg/ecodes).

As show in [figure 4.3.1](#) and [table 4.4.1](#), the largest proportion (21.4%) of people in employment in Guernsey worked in the finance sector in March 2011. The annual change in employment in this sector was an increase of 1.0% or 68 people (see [table 4.4.1](#) and [figure 4.4.1](#)).

The sector which showed the largest annual percentage change in the number of employees and self employed was the water supply, sewerage, waste management and remediation activities sector, which increased by 28%, from 72 to 92 people.

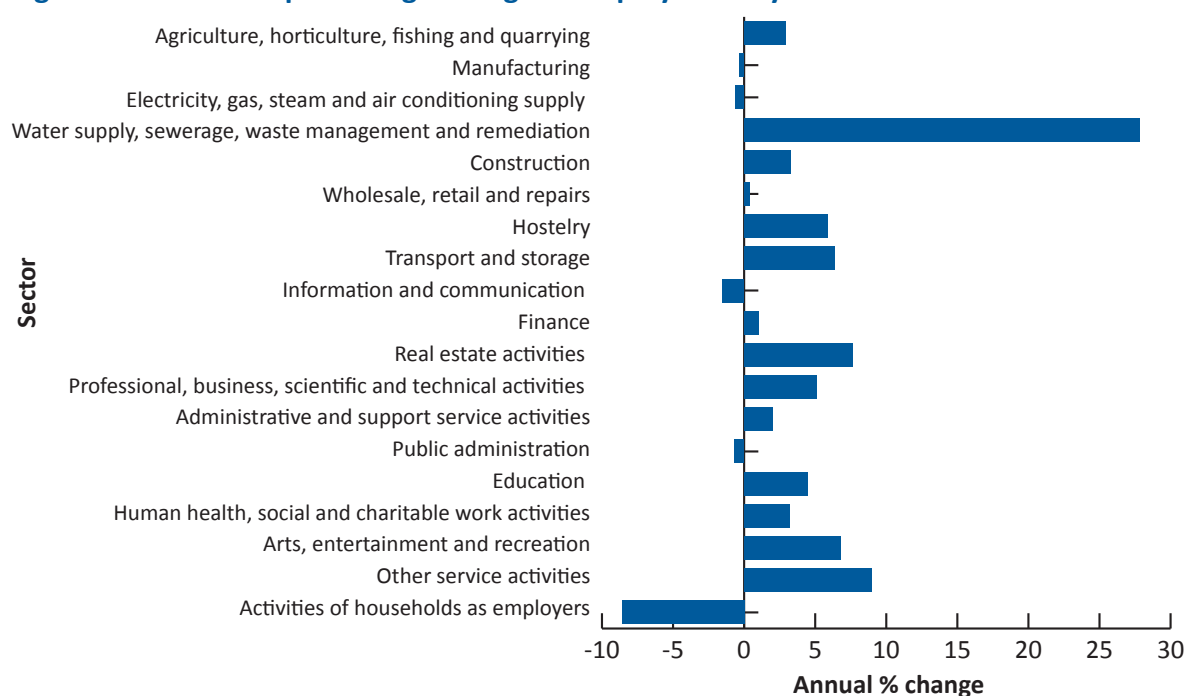
Of all self employed people 27.9% (855 people) worked in construction, representing 27.1% of total employment of that sector. Other service activities sector had the highest proportion of self employment with 31.6% of workers in the sector being self employed.

## 4.4 Employees and self employed by economic sector and gender

**Figure 4.4.1: Employment by economic sector at March 2011**

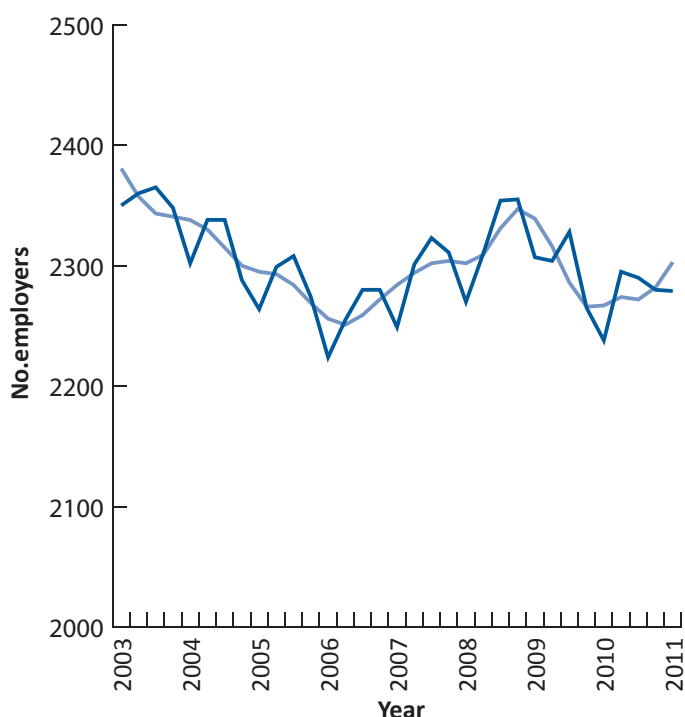
	No. employees			No. self employed			Total no. in employment	% of total for all sectors	Annual % change
	Female	Male	Total	Female	Male	Total			
Agriculture, horticulture, fishing and quarrying	174	151	325	10	126	136	461	1.4	2.9
Manufacturing	178	423	601	23	90	113	714	2.2	-0.3
Electricity, gas, steam and air conditioning supply	60	267	327	0	4	4	331	1.0	-0.6
Water supply, sewerage, waste management and remediation activities	9	70	79	0	13	13	92	0.3	27.8
Construction	130	2,166	2,296	19	836	855	3,151	9.8	3.3
Wholesale, retail and repairs	1,731	2,278	4,009	88	276	364	4,373	13.6	0.4
Hostelry	667	1,012	1,679	62	133	195	1,874	5.8	5.9
Transport and storage	173	730	903	10	103	113	1,016	3.2	6.4
Information and communication	274	706	980	10	31	41	1,021	3.2	-1.5
Finance	3,796	3,037	6,833	9	61	70	6,903	21.4	1.0
Real estate activities	98	94	192	6	15	21	213	0.7	7.6
Professional, business, scientific and technical activities	979	659	1,638	61	328	389	2,027	6.3	5.1
Administrative and support service activities	480	589	1,069	30	174	204	1,273	4.0	2.0
Public administration	3,306	2,140	5,446	4	30	34	5,480	17.0	-0.7
Education	288	102	390	75	20	95	485	1.5	4.5
Human health, social and charitable work activities	1,194	265	1,459	81	101	182	1,641	5.1	3.2
Arts, entertainment and recreation	151	202	353	24	33	57	410	1.3	6.8
Other service activities	301	87	388	122	57	179	567	1.8	9.0
Activities of households as employers	94	42	136	2	0	2	138	0.4	-8.6
Other	7	9	16	0	0	0	16	0.0	-50.0
<b>Total for all sectors</b>	<b>14,090</b>	<b>15,029</b>	<b>29,119</b>	<b>636</b>	<b>2,431</b>	<b>3,067</b>	<b>32,186</b>	<b>100</b>	<b>1.8</b>

**Figure 4.4.1: Annual percentage change in employment by economic sector at March 2011**



## 5.1 Employers by size

**Figure 5.1.1: Total employers**



At the end of March 2011, there were 2,279 employers in Guernsey, 41 (1.8%) more than the previous year (see [figure 5.1.1](#) and [table 5.1.1](#)).

There were 6 organisations employing 250 or more people in March 2011 the same number as in March 2010.

The majority of sectors saw an increase in employers over the year ending March 2011 (see [table 5.2.1](#)). Please note that some of the percentage changes are based on small numbers and can therefore seem large relative to the actual change in numbers.

Of the organisations which employed more than 50 people, 37 (31.6%) were in the finance sector at the end of March 2011.

**Table 5.1.1: Employers by size (number of employees)**

		No. employers by size (number of employees)								Total no. employers	Annual % change
		1	2 to 5	6 to 10	11 to 25	26 to 50	51 to 100	101 to 250	250+		
2008	Q2	595	830	366	284	120	69	38	8	2,310	0.4
2008	Q3	616	822	372	300	126	70	39	9	2,354	1.3
2008	Q4	632	842	359	291	116	72	34	9	2,355	1.9
2009	Q1	620	838	351	278	110	68	34	8	2,307	1.6
2009	Q2	597	841	362	281	111	71	33	8	2,304	-0.3
2009	Q3	596	851	359	289	112	76	37	8	2,328	-1.1
2009	Q4	589	815	366	264	120	69	35	7	2,265	-3.8
2010	Q1	606	788	355	265	113	73	32	6	2,238	-3.0
2010	Q2	606	822	370	264	116	79	31	7	2,295	-0.4
2010	Q3	588	811	370	284	115	79	36	7	2,290	-1.6
2010	Q4	599	816	359	273	121	70	36	6	2,280	0.7
2011	Q1	595	831	354	273	109	74	37	6	2,279	1.8

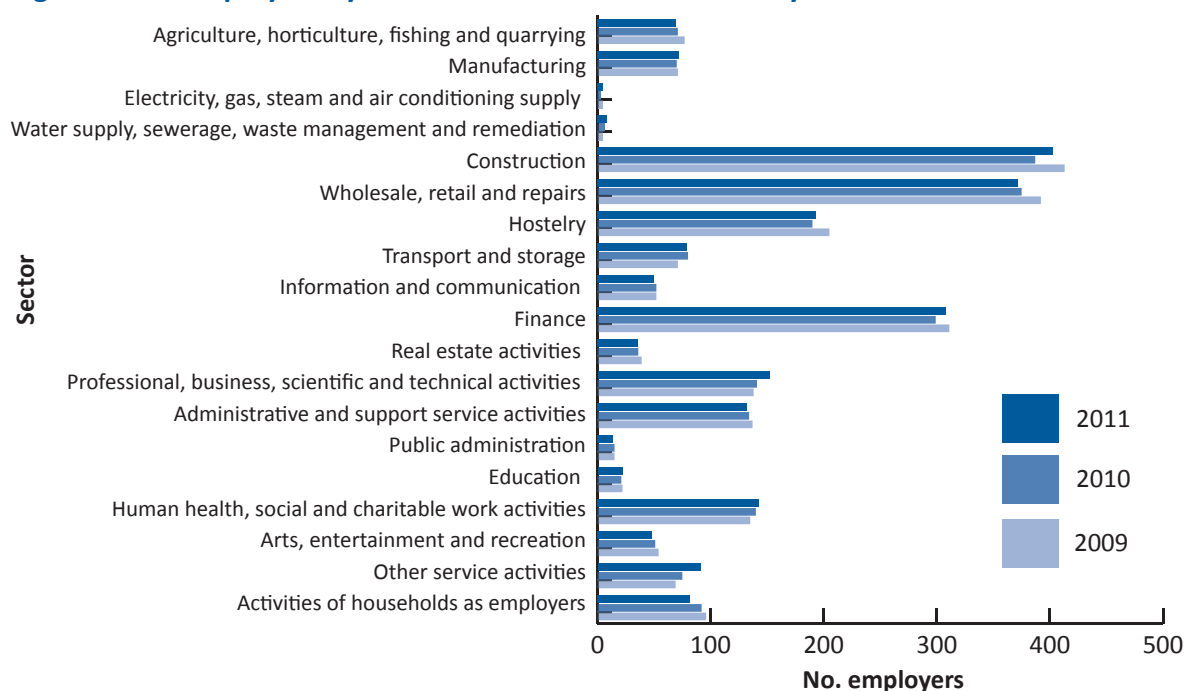


## 5.2 Employers by economic sector and size

Figure 5.2.1: Employers by economic sector and size (number of employees) at March 2011

	No. employers by size (number of employees)					% of total for all sectors	Annual % change
	1 to 5	6 to 25	26 to 50	51 or more	Total		
Agriculture, horticulture, fishing and quarrying	52	15	1	1	69	3.0	-2.8
Manufacturing	41	27	1	3	72	3.2	2.9
Electricity, gas, steam and air conditioning supply	2	1	0	2	5	0.2	66.7
Water supply, sewerage, waste management and remediation activities	5	2	0	1	8	0.4	33.3
Construction	289	103	5	6	403	17.7	4.1
Wholesale, retail and repairs	228	110	15	19	372	16.3	-0.8
Hostelry	98	76	10	9	193	8.5	1.6
Transport and storage	47	19	8	5	79	3.5	-1.3
Information and communication	30	12	3	5	50	2.2	-3.8
Finance	131	102	38	37	308	13.5	3.0
Real estate activities	27	7	2	0	36	1.6	0.0
Professional, business, scientific and technical activities	94	44	7	7	152	6.7	7.8
Administrative and support service activities	87	32	7	6	132	5.8	-1.5
Public administration	10	1	0	3	14	0.6	-6.7
Education	12	5	1	4	22	1.0	4.8
Human health, social and charitable work activities	88	39	9	7	143	6.3	2.1
Arts, entertainment and recreation	33	13	1	1	48	2.1	-5.9
Other service activities	74	15	1	1	91	4.0	21.3
Activities of households as employers	78	4	0	0	82	3.6	-10.9
<b>Total for all sectors</b>	<b>1,426</b>	<b>627</b>	<b>109</b>	<b>117</b>	<b>2,279</b>	<b>1.0</b>	<b>1.8</b>

Figure 5.2.1: Employers by economic sector at March each year



## 6.1 Contact details and further information

A summary of the business activities which make up each of the nineteen economic sectors used throughout this bulletin is available online at: [www.gov.gg/ecodes](http://www.gov.gg/ecodes).

You may also be interested in other publications from the Policy and Research Unit, which are all available online at [www.gov.gg/pru](http://www.gov.gg/pru).

Please contact Helen Walton (Senior Research Officer) for further information.

Policy and Research Unit  
Sir Charles Frossard House  
La Charroterie  
St Peter Port  
Guernsey  
GY1 1FH

Tel: (01481) 717240

Fax: (01481) 713787

e-mail: [policy.research@gov.gg](mailto:policy.research@gov.gg)

web: [www.gov.gg/pru](http://www.gov.gg/pru)